



EWP-202C WIRELESS ANNUNCIATOR SYSTEM



- Advanced dual-infrared beam and superior wireless technology
- Wireless multi-function receiver
- Dual channel receiver with status LED's
- 20 ft. detection range across doorway
- Independent entry/exit counters
- 200 ft. wireless RF transmission in open field
- 2 selective chime sounds per channel
- Chime volume control
- Resettable 6-digit counter (up to 999999)
- Power failure memory back-up
- Wireless push-button included
- 16 million I.D. codes system

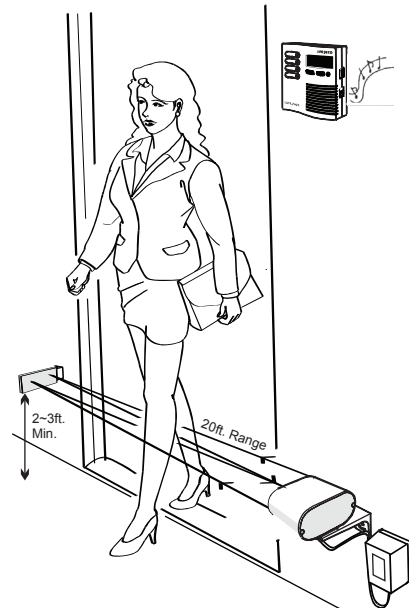
Stock number: 4130003

The EWP-202C is a two channel wireless annunciator system designed with a superior dual counter and active infrared technology. It delivers a pleasant chime along with a recorded count. It emits a continuous, invisible dual beam across the doorway to the reflector. When either beam is interrupted, it announces the entrance or exit of customers with a pleasant, distinguishable chime sound. Each event is counted, recorded, and registered by the built-in digital counter and can be viewed and compared later in both modes. The annunciator is also equipped with an alert mode that sounds the built-in siren when triggered, adding additional security. This is ideal for malls, office buildings, liquor stores, warehouses, parking structures, medical offices, and more.

Complete Kit Includes:

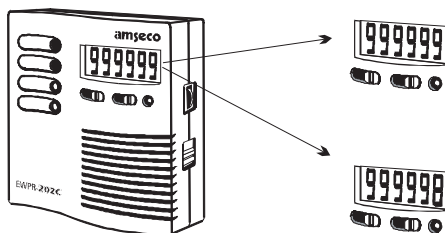
- 1 Infrared sensor/transmitter
- 1 Wireless receiver with built-in chime and counter
- 1 Wireless push-button
- 1 Reflector
- 2 Power transformers (12V AC 20VA)
- 1 Long plastic bracket
- 1 Short metal bracket
- 2 Short plastic brackets
- 2 6 ft. power cords with in-line switch
- 6 3/4" sheet metal screws
- 1 1/2" bolt with locking washer
- 4 1 1/4" machine screws with washer and nut
- 2 1/2" sheet metal screws

Application



Wireless Receiver

Keeps count on all incoming and outgoing customers and retains it in memory.



EWP-202C

WIRELESS ANNUNCIATOR SYSTEM

Specifications

Model	EWPT-202	EWPP-202	EWPR-202
Description	Infrared Sensor/ Transmitter	Wireless Push- Button	Wireless Receiver
Detection Method	Active Infrared	-	RF
Detection Range	10 ft. JP2 = ON 20 ft. JP2 = OFF (f.s.)	-	-
Max. Transmission Range	200 ft. Open Field	200 ft. Open Field	-
Power Source	12V AC 20 VA	12V DC Battery Included	12V AC 20VA
Power Consumption (Standby)	50mA	-	100mA
Power Consumption (In Activation)	1 Amp	-	500mA
Volume Control	-	-	0-85dB
Chime Sounds Selectable	-	Dip Switch: 2	Dip Switch: 1
Response Time	4m/sec	-	-
Light Source	Infrared Pulse Beam 950nm	-	-
Wireless Frequency	315 Mhz	315Mhz	315Mhz
Chime Terminal Output (-)	Ground	-	-
Chime Terminal Output (+V)	12V DC 1A	-	-
Chime Terminal Output (OC)	Exit Output (-) TR Output 1A	-	-
Chime Terminal Output (IC)	Entry Output (-) TR Output 1A	-	-
Terminal 1 & 2	12V AC Input	-	12V AC Input
Terminal 3	-	-	Relay Dry Contact N.O. (2 sec)
Terminal 4	-	-	Relay Dry Contact COM (2 sec)
Entry/Exit Time Delay	-	-	JP1 ON = 30 sec JP1 OFF = 60 sec
Alarm Sound Duration	-	-	50 Sec
Alarm Sound ON/OFF	-	-	JP2 ON / JP2 OFF
Sensitivity	JP2 ON = Min JP2 OFF = Max	-	-
Travel Direction	SW1 Selectable	-	-
Blocked Infrared Beam Warning	JP1 Selective: OFF/10Sec/60Sec	-	-
Counter Memory	-	-	EEPROM
Installation	Indoor	Indoor	Indoor
Operating Temperature Range	14 - 122°F (-10 - 50°C)	14 - 122°F (-10 - 50°C)	14 - 122°F (-10 - 50°C)

f.s. = Factory Setting

Alert Mode

Protect restricted, unauthorized areas after hours by simply changing the setting on your receiver from CHIME to ALERT MODE. This feature provides a programmable entry/exit delay (30 or 60 seconds) and a 50 second audible alarm when triggered. The EWP-202C alarm relay output allows you to connect to any security control panel or to a number of other devices such as: video event recorder, self-contained siren, bell box, strobe, or any other device designed for alarm signaling to provide additional security.

Integration to Security Devices

