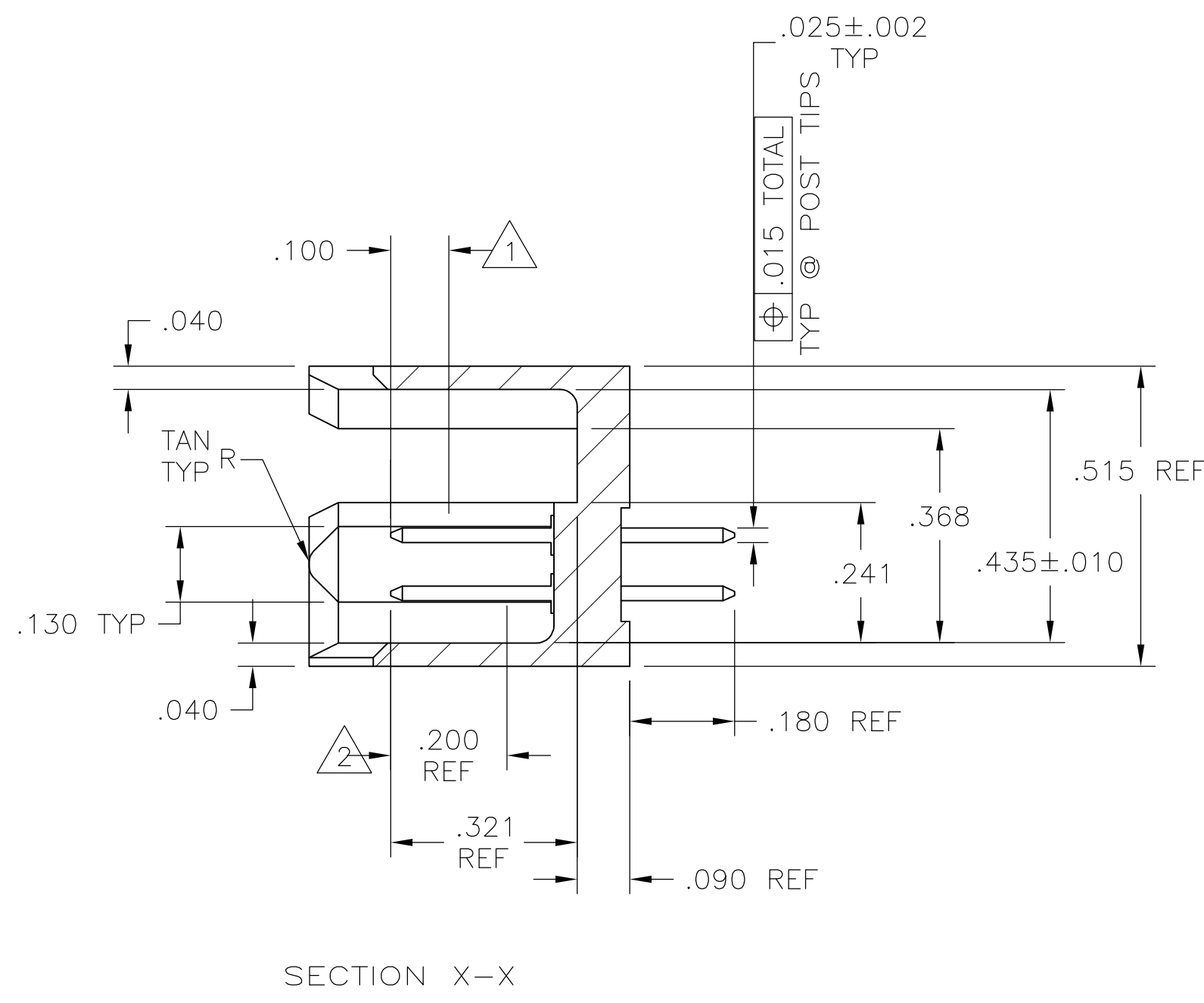
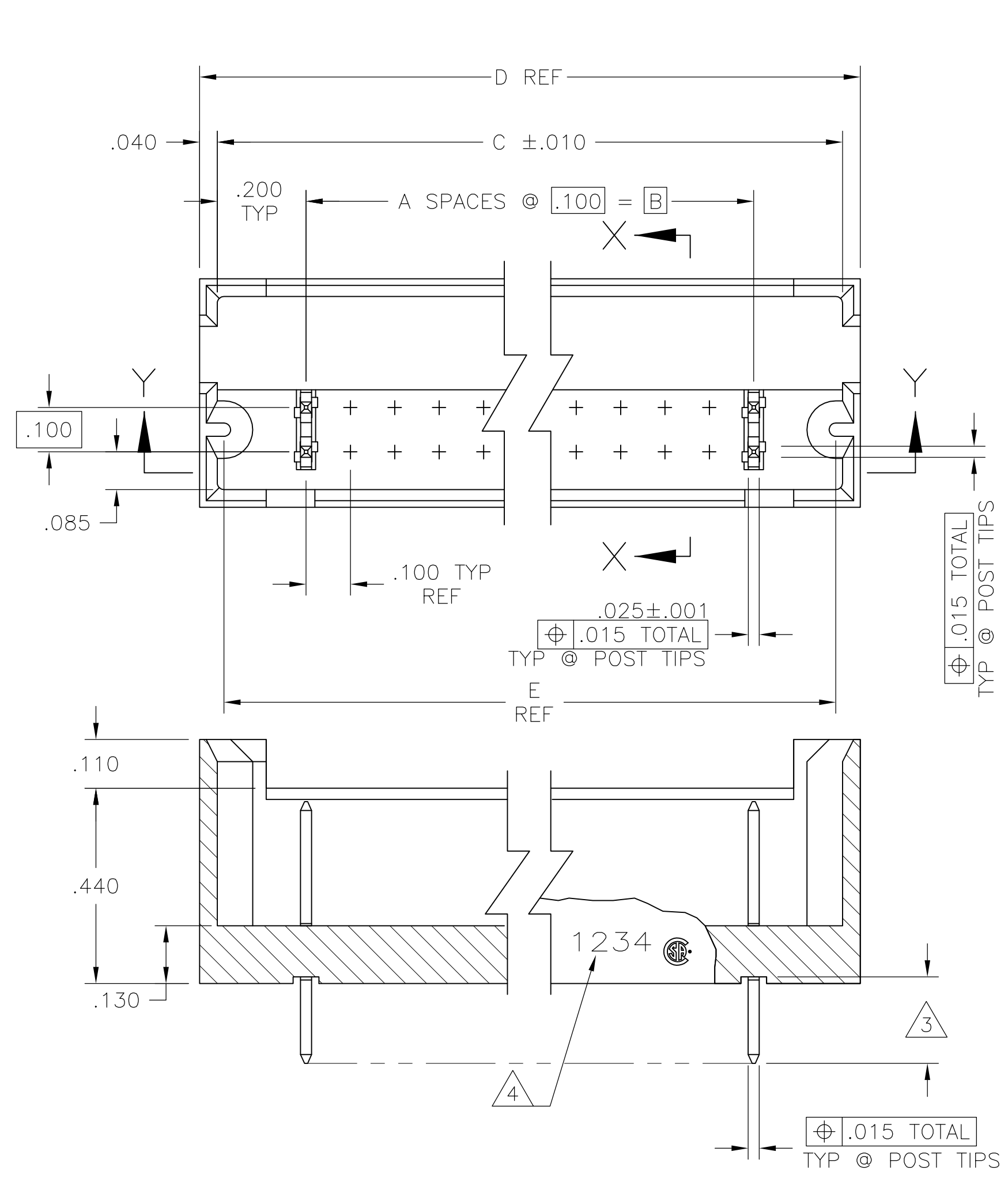
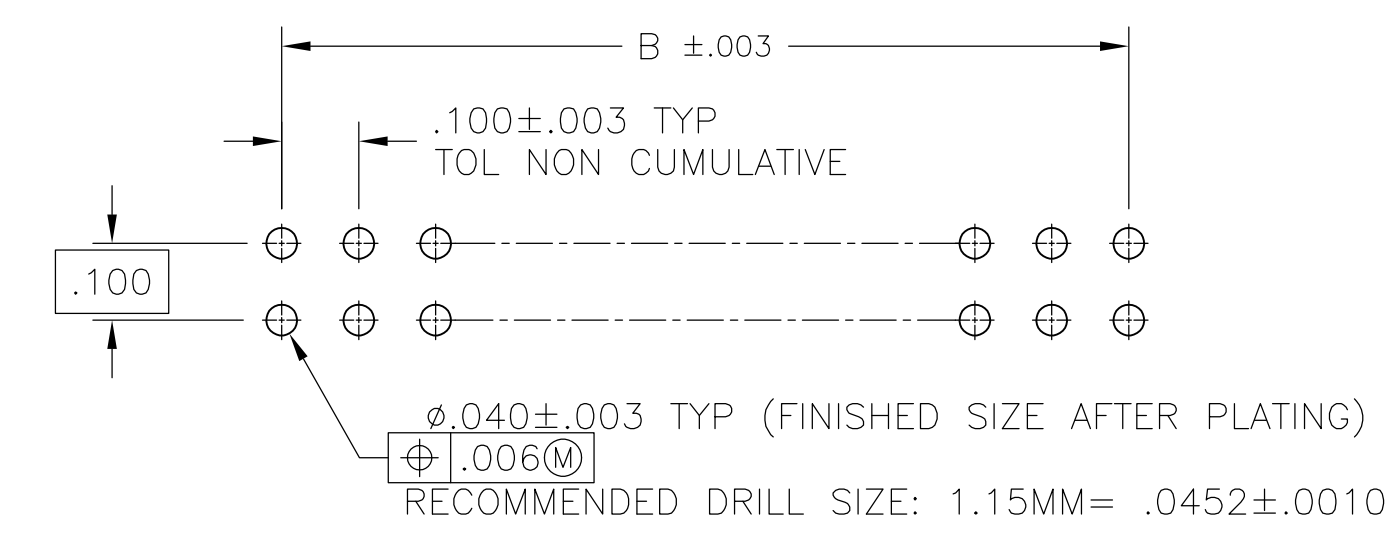


LOC		DIST		REVISIONS			
F	LTR	PER	ECO	DATE	DN	APVD	
LS	REVISED	PER	ECO-13-015097	25SEP2013	KH	JO	



- 1 POINT OF MEASUREMENT FOR PLATING THICKNESS.
- 2 FINISH OVER INDICATED AREA: .000030 GOLD OVER .000050 NICKEL.
- 3 FINISH OVER INDICATED AREA: .000100-.000200 BRIGHT TIN LEAD OVER .000050 NICKEL.
- 4 RECESSED DATE CODE AND LOGO.
- 5 OBSOLETE PART NUMBER.
- 6 PRELIMINARY PART - NOT RELEASED FOR PRODUCTION
- 7 FINISH OVER INDICATED AREA: .000100-.000200 MATTE TIN OVER .000050 NICKEL.
- 8 ROHS 2002/95/EC COMPLIANT
- 9 OBSOLETE PARTS: OBSOLETE CIS STREAMLINING PER D.RENAUD/D.SINISI



NO. OF POSN	A	B	C ±.010	D	E	PART NUMBER
12	26	8	7-102692-9			
12	160	8	7-102692-8			
46	94	8	7-102692-7			
21	44	8	7-102692-6			
6	14	8	7-102692-5			
89	180	8	7-102692-4			
73	148	8	7-102692-3			
63	128	8	7-102692-2			
69	140	8	7-102692-1			
64	130	8	7-102692-0			
42	86	8	6-102692-9			
35	72	8	6-102692-8			
14	30	8	6-102692-7			
9	20	8	6-102692-6			
7	16	8	6-102692-5			
34	70	8	6-102692-4			
19	40	8	6-102692-3			
44	90	8	6-102692-2			
99	200	8	6-102692-1			
54	110	8	6-102692-0			
59	120	8	5-102692-9			
49	100	8	5-102692-8			
47	96	8	5-102692-7			
39	80	8	5-102692-6			
29	60	8	5-102692-5			
24	50	8	5-102692-4			
17	36	8	5-102692-3			
11	24	8	5-102692-2			
5	12	8	5-102692-1			
12	26	2	2-102692-9			
79	160	2	2-102692-8			
46	94	2	2-102692-7			
21	44	2	2-102692-6			
6	14	2	2-102692-5			
89	180	2	2-102692-4			
73	148	2	2-102692-3			
63	128	2	2-102692-2			
69	140	2	2-102692-1			
64	130	2	2-102692-0			
42	86	1	1-102692-9			
35	72	1	1-102692-8			
14	30	1	1-102692-7			
9	20	1	1-102692-6			
7	16	1	1-102692-5			
34	70	1	1-102692-4			
19	40	1	1-102692-3			
44	90	1	1-102692-2			
99	200	1	1-102692-1			
54	110	1	1-102692-0			
59	120		102692-9			
49	100		102692-8			
47	96		102692-7			
39	80		102692-6			
29	60		102692-5			
24	50		102692-4			
17	36		102692-3			
11	24		102692-2			
5	12		102692-1			

THIS DRAWING IS A CONTROLLED DOCUMENT.

DIMENSIONS: INCHES
 TOLERANCES UNLESS OTHERWISE SPECIFIED:
 0 PLC ± -
 1 PLC ± -
 2 PLC ± -
 3 PLC ± .005
 4 PLC ± -
 ANGLES ± -

MATERIAL: HEADERS: GLASS FILLED FLAME RETARDANT THERMOPLASTIC COLOR: BLACK POST: COPPER ALLOY
 FINISH: SEE TABLE

DWG: B. HAYMAKER 11JAN11
 CHK: J. GESFORD 12NOV98
 APVD: J. GESFORD 12NOV98
 NAME:

STE TE Connectivity
 HEADER ASSEMBLY, MOD II, .100C.100CL, .025 SQ POSTS
 APPLICATION SPEC: -
 SIZE: A1
 CAGE CODE: 00779
 DRAWING NO: 102692
 WEIGHT: -
 CUSTOMER DRAWING: -
 SCALE: 4:1
 SHEET: 1 OF 1
 REV: 15