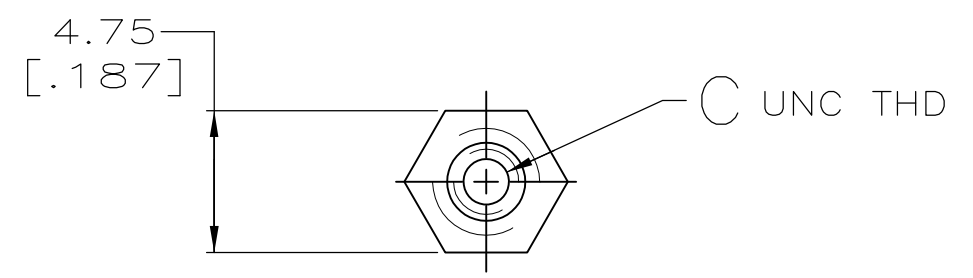
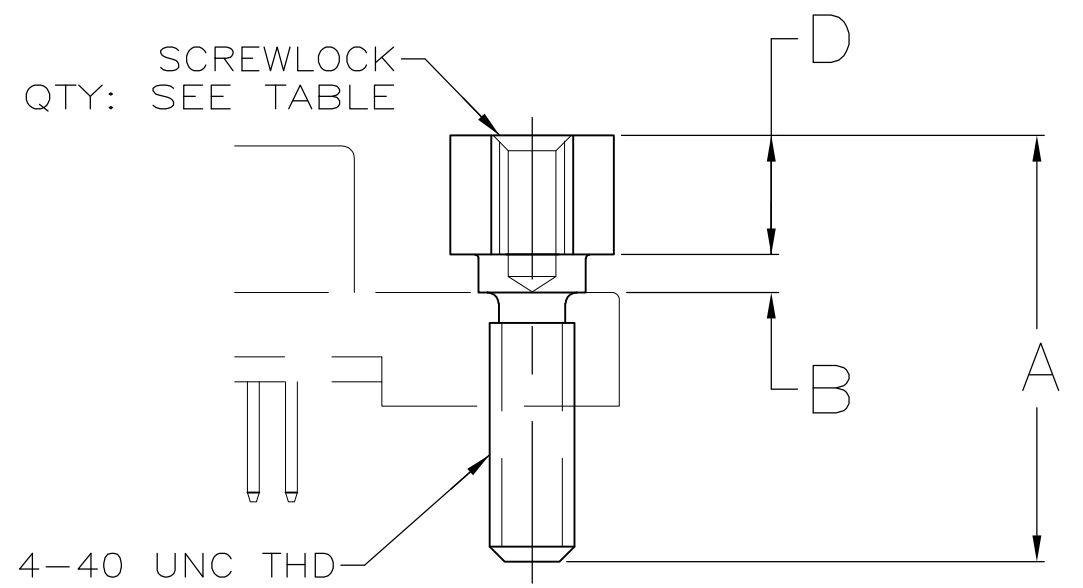


THIS DRAWING IS UNPUBLISHED. RELEASED FOR PUBLICATION
 © COPYRIGHT - By - ALL RIGHTS RESERVED.

| | | | | | | | |
|-----|------|-----------|-----|---------------------------|---------|-----|------|
| LOC | DIST | REVISIONS | | | | | |
| GP | 00 | P | LTR | DESCRIPTION | DATE | DWN | APVD |
| | | | M3 | REVISED PER ECO-11-004835 | 11MAR11 | RK | HMR |



1 OBSOLETE PARTS: OBSOLETE CIS STREAMLINING PER D.RENAUD/D.SINISI



| | | | | | | | |
|---|--------------------|------|--------------------------|------|-------------|--------------|---------------------|
| 1 | OBSOLETE | 1000 | 4.19 [.165] | 2-56 | 1.07 [.042] | 14.27 [.562] | 749087-8 |
| | OBSOLETE | 1000 | 3.99 [.157] | 2-56 | 1.27 [.050] | 14.27 [.562] | 749087-7 |
| | OBSOLETE | 2 | 3.71±0.05 [.146±.002] | 2-56 | 1.27 [.050] | 13.92 [.548] | 749087-6 |
| | OBSOLETE | 1000 | 3.99 [.157] | 4-40 | 1.27 [.050] | 18.29 [.720] | 749087-5 |
| | | 2 | 4.19 [.165] | 2-56 | 1.07 [.042] | 14.27 [.562] | 749087-4 |
| | | 1000 | 3.99 [.157] | 2-56 | 1.27 [.050] | 9.65 [.380] | 749087-3 |
| | | 2 | 3.99 [.157] | 2-56 | 1.27 [.050] | 9.65 [.380] | 749087-2 |
| | | 2 | 3.99 [.157] | 2-56 | 1.27 [.050] | 14.27 [.562] | 749087-1 |
| | SCREWLOCKS PER BAG | | | D | C | B | A |

| | | | | | |
|--|--|---|----------|------------------|------------------------|
| THIS DRAWING IS A CONTROLLED DOCUMENT. | | DWN | 11/24/93 | | TE Connectivity |
| | | CHK | 02/25/94 | | |
| | | APVD | - | | |
| | | PRODUCT SPEC | - | | |
| DIMENSIONS: INCHES | | TOLERANCES UNLESS OTHERWISE SPECIFIED: 0 PLC ± - 1 PLC ± - 2 PLC ± 0.13 [.005] 3 PLC ± - 4 PLC ± - ANGLES ± - | | NAME | |
| MATERIAL | | FINISH | | APPLICATION SPEC | |
| STAINLESS STEEL | | - | | - | |
| | | WEIGHT | - | | RESTRICTED TO |
| | | CUSTOMER DRAWING | | SCALE | 4:1 |
| | | SIZE | A3 | CAGE CODE | 00779 |
| | | DRAWING NO | C-749087 | | SHEET |
| | | | | 1 OF 1 | REV |
| | | | | M3 | |