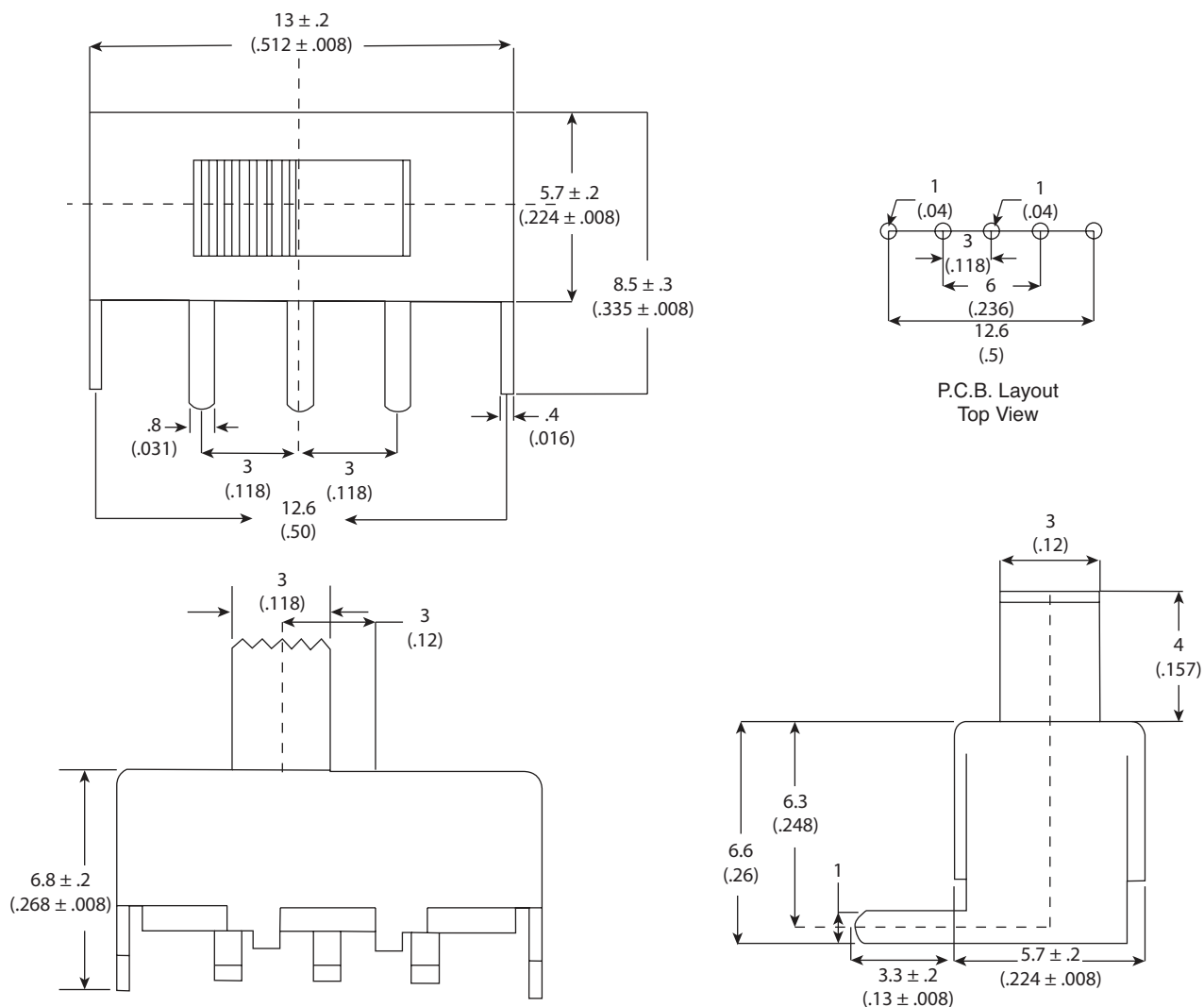


Dimensions: mm (in.)

**Mechanical Specifications:**

- Operating Force: 200gf \pm 100gf
- Life Test: 10K Cycles 15-18 Cycles/Min

Electrical Specifications:

- Rating: 0.5A 50VDC
- Insulation Resistance: 100M Ω Min.
- Dielectric Strength: 500VAC for 1 minute
- Contact resistance: 30m Ω Max.

Note:

- RoHS Compliant

Slide Switch
103-1212H-EV

Mountain
Switch