

RAFIX 22 QR - Twin pushbutton, oval collar, illuminated

1.30.241.002/2207



General information

Legending	red 0, green I
Color of lens	opaque green/opaque red
Color of front ring	slate-grey
Form of collar	oval

Dimensions

Dimensions of collar	59.6 x 29.8 mm
Overall height	9.1 mm
Mounting depth with contact block without cable	56.4 mm
Mounting hole	Ø 22.3 mm
Mounting grid	- mm

Mechanical design

Mounting	ring nut
Contact function	momentary
Illuminability	yes

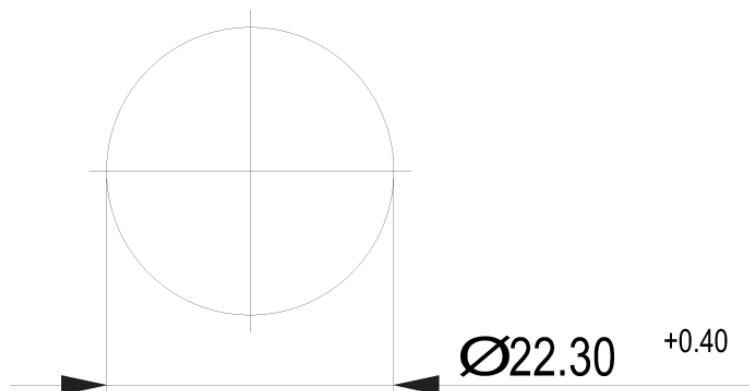
Mechanical characteristics

Operating force max.	approx. 5 N for 1 switching element
Robustness max.	100 N

Other specifications

Degree of protection from front side	IP65 (DIN EN 60529)
Ambient temp. operating min.	-25 °C
Ambient temp. operating max.	+70 °C
Storage temperature min.	-40 °C
Storage temperature max.	+80 °C
Environmental resistance	acc. to IEC 60068-2-14, -30, -33 and -78
ROHS compliant	yes
REACH compliant	yes

Panel cut out to IEC 60947-5-1



Technical data are approximate and intended solely for general orientation in the selection of a product.
Subject to modifications and errors. Images and other graphics may only be similar.
For more information, refer to www.rafi.de chapter Imprint / Data Protection.

