

LOC	DIST	REVISIONS					
		P	LTR	DESCRIPTION	DATE	DWN	APVD
-	-		A	REVISED PER ECR-14-007823	02JUN2014	RS	EC
			B	ECO-15-015144: ADD UL.	03NOV2015	EC	EC

SAFETY ORGANIZATIONS

THIS FILTER HAS BEEN FORMALLY RECOGNIZED, CERTIFIED OR APPROVED BY THE LISTED AGENCY. THEREFORE, ALL TEST/REQUIREMENTS SPECIFIED IN THE LATEST REVISION OF THE FOLLOWING AGENCY STANDARDS HAVE BEEN MET:

UL

OPERATING SPECIFICATIONS

LINE CURRENT/VOLTAGE: 600 A, 690 VAC
LINE FREQUENCY: 50-60 Hz
NOMINAL LEAKAGE CURRENT: 10 mA
MAXIMUM LEAKAGE CURRENT: 330mA @ 400V, 50HZ

OPERATING AMBIENT TEMPERATURE RANGE
@ RATED CURRENT, I : -10°C TO +50°C

IN AN AMBIENT, T, HIGHER THAN 50°C,
THE MAXIMUM OPERATING
CURRENT, I, IS AS FOLLOWS:

$$I_0 = I_R \sqrt{\frac{100 - T_0}{50}}$$

RELIABILITY SPECIFICATIONS

STORAGE TEMPERATURE: -40°C TO +85°C
HUMIDITY: 21 DAYS @ 40°C AND 95% RH

TEST SPECIFICATIONS

INDUCTANCE, NOMINAL: 88.7 µH

CAPACITANCE @ 1 kHz, 0.25 VAC MAX., 25°C ±1°C:
LINE TO GROUND, NOMINAL: 2.62 µF
LINE TO LINE, NOMINAL: 11.9 µF

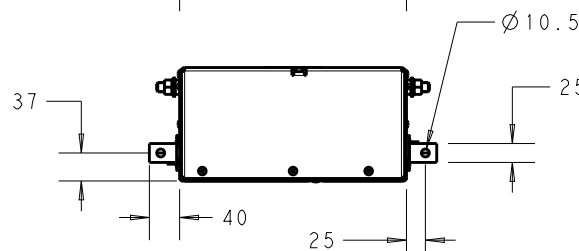
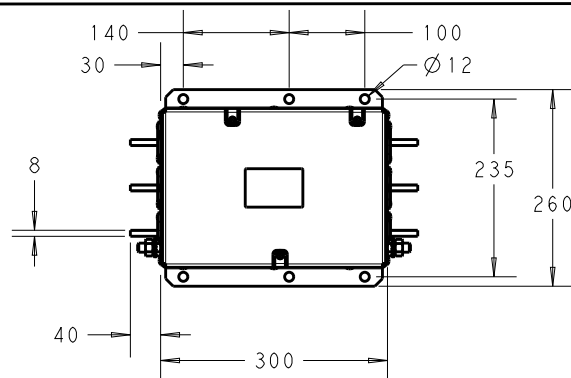
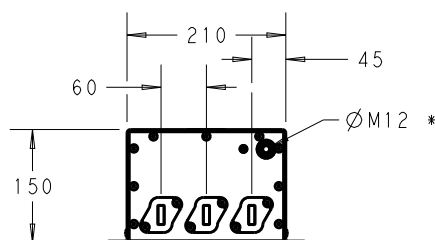
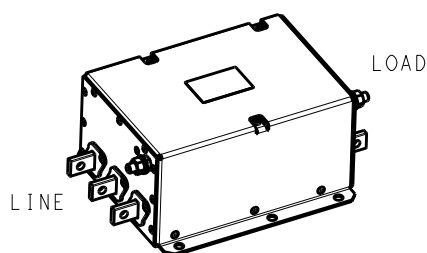
DISCHARGE RESISTOR
L/G AND L/L I.R. 666kΩ / 666kΩ
IR (NO DISCHARGE RESISTOR) 20°C, 50% RH AND 100VDC, MIN: 6000MΩ

RECOMMENDED RECEIVING INSPECTION HIPOT

LINE TO GROUND FOR 1 MINUTE: 2640 VDC
LINE TO LINE FOR 1 MINUTE: 2520 VDC

FILTER APPROVAL:

THE BEST WAY TO SELECT AND QUALIFY
A FILTER IS FOR YOUR ENGINEERING TO
TEST THE UNIT IN YOUR EQUIPMENT.



* DO NOT LOOSEN INNER GROUND NUTS.
TORQUE OUTER GROUND NUTS TO:
25-30 NM [220-260 IN-LB]

TYPICAL INSERTION LOSS
COMMON MODE 50/50 Ω; DIFFERENTIAL MODE 100/100 Ω

MHz	0.01	0.05	0.15	0.5	1.0	3.0	5.0	10	30
CM	11	25	68	88	72	70	60	43	24
DM	31	43	71	73	62	50	45	38	27

20

RELEASED FOR PUBLICATION

ALL RIGHTS RESERVED.

BY -

COPYRIGHT 20

©

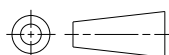
THIS DRAWING IS UNPUBLISHED.

DIMENSIONS:

mm

TOLERANCES UNLESS
OTHERWISE SPECIFIED:

0 PLC ±2
1 PLC ±1
2 PLC ±0.5
3 PLC ±0.2
4 PLC ±0.0001
ANGLES ±-



DWN

RS

13DEC2013

CHK

EC

13DEC2013

APVD

EC

13DEC2013

PRODUCT SPEC

-

APPLICATION SPEC

-

WEIGHT

-

MATERIAL

-

FINISH

-



TE Connectivity

NAME

600APH12P
3-PHASE DELTA FILTER

SIZE

CAGE CODE

DRAWING NO

RESTRICTED TO

A4

00779

C-8-1609148-9

-

Customer Drawing

SCALE 1:1

SHEET 1 OF 1

REV B