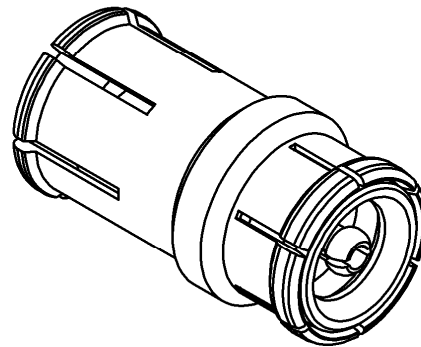
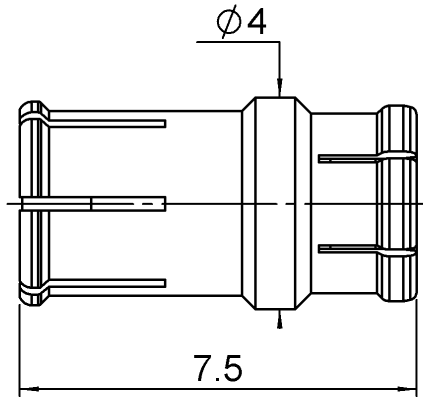


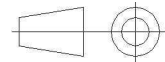
SMP-MAX FEMALE SLIDE-MMBX MALE SNAP TYPE
STRAIGHT ADAPTER

R191.560.000

Série : ADAPTER



All dimensions are in mm.



COMPONENTS	MATERIALS	PLATING (µm)
BODY	BERYLLIUM COPPER	NPGR
CENTER CONTACT	BERYLLIUM COPPER	NPGR
OUTER CONTACT		
INSULATOR	PTFE	
GASKET		
OTHERS PARTS		
-	-	-
-	-	-

Issue : 1107 B

In the effort to improve our products, we reserve the rights to make changes judged to be necessary.

RADIAL 

SMP-MAX FEMALE SLIDE-MMBX MALE SNAP TYPE**R191.560.000****STRAIGHT ADAPTER**Série : **ADAPTER****PACKAGING**

Standard	Unit	Other
100	'W' option	Contact us

SPECIFICATION**ELECTRICAL CHARACTERISTICS**

Impedance	50	Ω
Frequency	0-6	GHz
VSWR	1.25* + 0,0000	x F(GHz) Maxi
Insertion loss	0.15*	$\sqrt{F}(\text{GHz})$ dB Maxi
RF leakage	- (NA)	- F(GHz)) dB Maxi
Voltage rating	335	Veff Maxi
Dielectric withstanding voltage	500	Veff mini
Insulation resistance	1000	M Ω mini

ENVIRONMENTAL

Operating	-55/+155	$^{\circ}\text{C}$
Hermetic seal	NA	Atm.cm3/s
Panel leakage	NA	

MECHANICAL CHARACTERISTICS

Center contact retention		
Axial force – Mating end	10	N mini
Axial force – Opposite end	10	N mini
Torque	NA	N.cm mini

Recommended torque

Mating	SMP-MAX	0	N.cm
	MMBX	0	N.cm
		0	N.cm
Panel nut		NA	N.cm

Mating life	100	Cycles mini
Weight	0,2170	g

OTHER CHARACTERISTICS

*VSWR: up to 3GHz; 3-6GHz, 1.35max
 *Coaxial Transmission Line Only
 *Slide type receptacle+Bullet+Snap type receptacle
 Power handling (typical) : >150W@3GHz at 25°C
 Radial working angle: 3°min
 Axial working range : 2mm

Issue : **1107 B**

In the effort to improve our products, we reserve the rights to make changes judged to be necessary.

RADIAL 

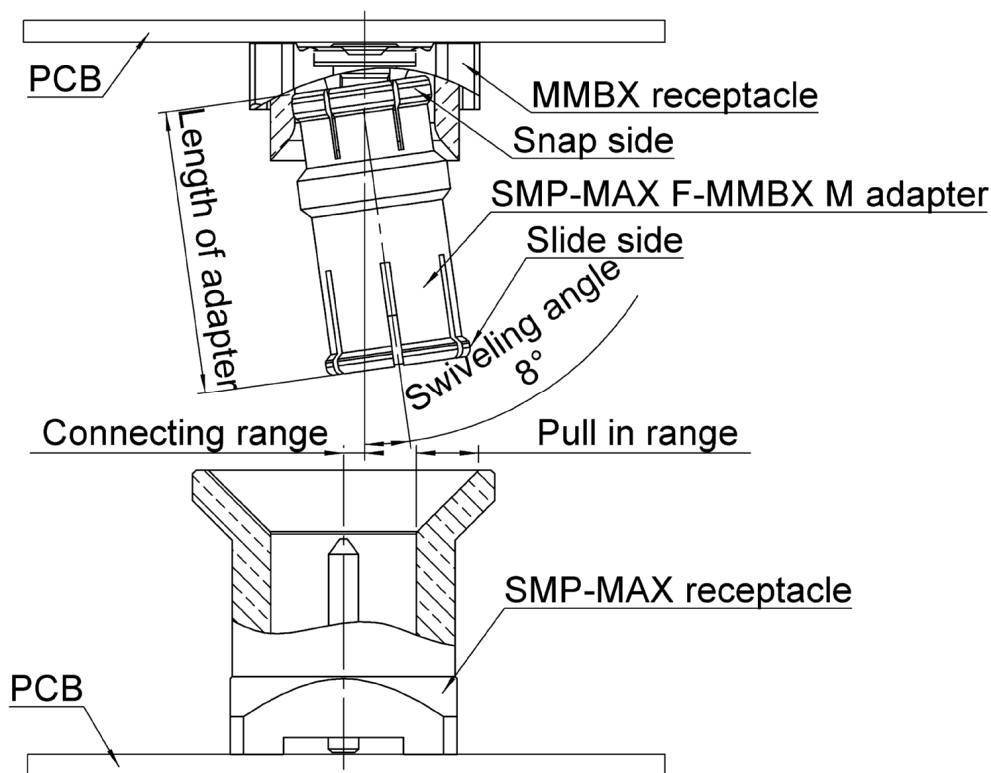
SMP-MAX FEMALE SLIDE-MMBX MALE SNAP TYPE

STRAIGHT ADAPTER

R191.560.000

Série : ADAPTER

SMP-MAX connecting range



The connecting range represents the maximum misalignment during connection.

The swiveling angle is the maximum possible angle of the adapter in a snap receptacle.

A blind assembly is guaranteed if radial misalignment is smaller than connecting range. Otherwise a manual lead-in is necessary.

Issue : 1107 B

In the effort to improve our products, we reserve the rights to make changes judged to be necessary.

RADIAL 

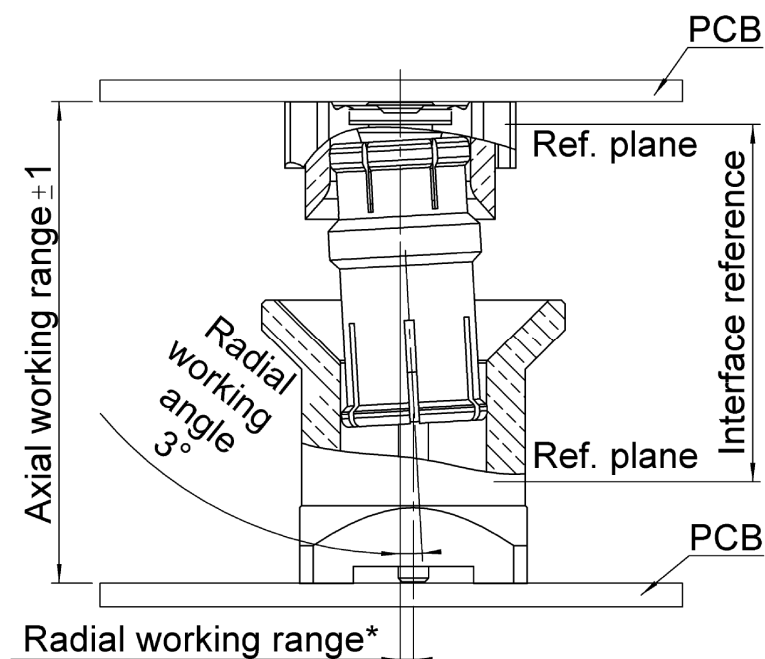
SMP-MAX FEMALE SLIDE-MMBX MALE SNAP TYPE

R191.560.000

STRAIGHT ADAPTER

Série : ADAPTER

SMP-MAX radial and axial working range



Electrical performance is achieved when radial and axial misalignments are within their working ranges.

* Radial working range = (length of the adapter)* Sin(radial working angle).

Issue : 1107 B

In the effort to improve our products, we reserve the rights to make changes judged to be necessary.

RADIAL 