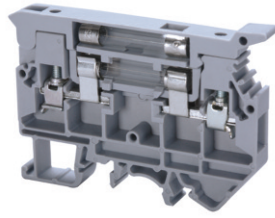


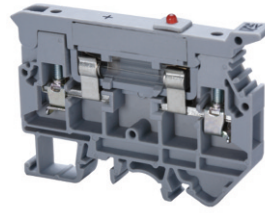
CAFL4U(L) is equipped with a LED for blown fuse indication. CAFL4U(N) is equipped with a neon bulb for same application.

**CAFL4U**



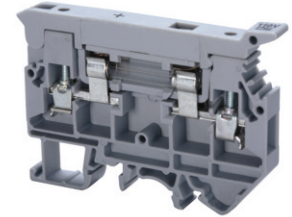
† Fuse not included.

**CAFL4U(L)\***



† Fuse not included.

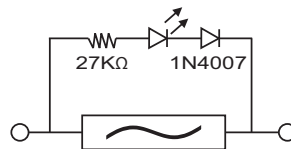
**CAFL4U(N)**



† Fuse not included.

Terminal Width	9 mm			9 mm			9 mm		
Height x Length	50 x 72 mm			50 x 72 mm			50 x 72 mm		
Stripping Length	9.5 mm			9.5 mm			9.5 mm		
Insulation Material	Polyamide 6.6			Polyamide 6.6			Polyamide 6.6		
Type of Connection	2 screw clamps			2 screw clamps			2 screw clamps		
LED/Neon Voltage				24V AC/DC, 48V AC/DC, 110V AC/DC, 220V AC, 300V AC			110-220V AC/DC, 300V AC		
Type of Fuse Used	Ø1/4x1 in., Ø1/4x1 1/4 in.			Ø1/4x1 in., Ø1/4x1 1/4 in.			Ø1/4x1 in., Ø1/4x1 1/4 in.		
Approvals									
Wire Range	22-10 AWG	0.2-4 sq.mm	22-10 AWG	22-10 AWG	0.2-4 sq.mm	22-10 AWG	22-10 AWG	0.2-4 sq.mm	22-10 AWG
Voltage Rating	600 V	1000 V	600 V	600 V	1000 V	600 V	600 V	1000 V	600 V
Current Rating	16 A	6.3 A	16 A	16 A	6.3 A	16 A	16 A	6.3 A	16 A
Torque	7 lb-in	0.5 Nm	7 lb-in	7 lb-in	0.5 Nm	7 lb-in	7 lb-in	0.5 Nm	7 lb-in
Other Approvals									

	Cat. No.	Std. Pk.	Cat. No.	Std. Pk.	Cat. No.	Std. Pk.	
<b>Terminal Block</b>	<b>CAFL4U</b>	25	<b>CAFL4U(L)*</b>	25	<b>CAFL4U(N)</b>	25	
<b>End Plate</b>	EPCAFL4U	50	EPCAFL4U	50	EPCAFL4U	50	
<b>DIN Rail</b> for ordering information refer to pages 90-91							
<b>End Stop</b> for ordering information refer to page 92	CA702 CA802	50 50	CA702 CA802	50 50	CA702 CA802	50 50	
<b>External Jumper</b>	2 pole 3 pole 4 pole 10 pole	CA716/2 CA716/3 CA716/4 CA716/10	50 50 50 25	CA716/2 CA716/3 CA716/4 CA716/10	100 50 50 20	CA716/2 CA716/3 CA716/4 CA716/10	100 50 50 20
<b>Marking Tags</b>	MT9	100	MT9	100	MT9	100	



LED Circuit for offline indication in CAFL4UL24V