

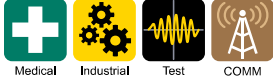
0.5A to 6A, 250VAC EMI Filters

Features

- ◆ High Voltage Pulse Attenuation
- ◆ Lug or Wire Terminations
- ◆ Low Earth Leakage Current Option
- ◆ Conforms to UL, CSA and
- ◆ EN Safety Agency Certifications



Key Market Segments & Applications



Specifications

Model	RSAL-20R5W		RSAL-2001W		RSAL-2002W		RSAL-2003W		RSAL-2006W	
	RSAL-20R5A	RSAL-20R5WL	RSAL-2001A	RSAL-2001WL	RSAL-2002A	RSAL-2002WL	RSAL-2003A	RSAL-2003WL	RSAL-2006A	RSAL-2006WL
Rated Voltage (AC, DC)	V 250V									
Rated Current	A 0.5A		A 1A		A 2A		A 3A		A 6A	
Withstand Voltage	V Terminals to Case: 2500VAC (1 Minute)									
Isolation Resistance	MΩ 100MΩ minimum (500VDC, 1 Minute)									
Leakage Current (max)	A RSAL-20xxx 1mA; RSAL20xxxL 10uA (250VAC, 60Hz)									
DC Resistance (total)	mΩ 700		mΩ 600		mΩ 250		mΩ 150		mΩ 80	
Operating Temperature	°C -25 to +85°C (Derate above 55°C, see derating curve)									
Storage Temperature	°C -25 to +85°C									
Safety Agency Certifications	- UL1283, CSA C22.2 No.8, EN60939									
Weight	g 61g Maximum									
Warranty	yr 5 Year									

Options

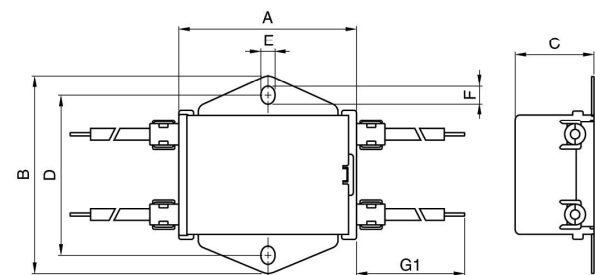
Wire Terminations	RSAL-20xxW
Lug Terminations	RSAL-20xxA
Wire Terminations & Low Leakage Current	RSAL-20xxWL
Lug Terminations & Low Leakage Current	RSAL-20xxAL

Derating

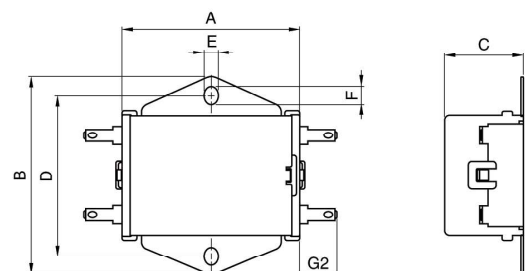


Outline Drawing

RSAL-20R5/2001/2002/2003/2006W(L)



RSAL-20R5/2001/2002/2003/2006A(L)



Circuit

RSAL-2 *** W
RSAL-2 *** A



RSAL-2 *** WL
RSAL-2 *** AL



Attenuation Characteristics

RSAL-20R5W/A



RSAL-2001W/A



RSAL-2002W/A



RSAL-2003W/A



RSAL-2006W/A



RSAL-20R5WL/AL



RSAL-2001WL/AL



RSAL-2002WL/AL



RSAL-2003WL/AL



RSAL-2006WL/AL



For Additional Information, please visit
us.tdk-lambda.com/lp/products/r-series.htm

