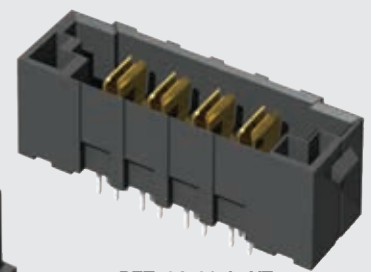




POWER STRIP 40



PES-08-02-L-VT



PES-04-01-L-VT

PES, PET SERIES

(6.35 mm) .250"

40 A HIGH POWER HEADER & SOCKET

PES Mates with:
PET

PET Mates with:
PES, PESS

SPECIFICATIONS

For complete specifications see www.samtec.com?PET or www.samtec.com?PES

Insulator Material:
Black LCP

Terminal Material:
Copper Alloy

Plating:

Sn or Au over 50 μm (1.27 μm) Ni

Operating Temp Range:

-55 °C to +105 °C with Tin

-55 °C to +125 °C with Gold

Voltage Rating:
725 VAC/1025 VDC

Wiping Distance:
(4.14 mm) .163" Max

Standard Creepage:
(3.66 mm) .144"

Standard Clearance:
(3.31 mm) .130"

RoHS Compliant:

Yes
Lead-Free Solderable:
Yes

PET/PES	
PINS	CURRENT RATING (PER CONTACT)
1	58.7 A
2	48.5 A
3	41.1 A
4	38.0 A
8	29.4 A

RECOGNITIONS

For complete scope of recognitions see www.samtec.com/quality



ALSO AVAILABLE (MOQ Required)

- Locking Clip (Manual placement required)
- No Latch ears
- Other platings

OTHER SOLUTIONS

- Combination Signal/Power. See PESC or PETC Series.

Note:
Some sizes, styles and options are non-standard, non-returnable.

PES	NO. PINS PER ROW	LEAD STYLE	PLATING OPTION	TAIL OPTION	OTHER OPTION
	-02, -04, -06, -08	-01 = Use with (1.60 mm) .062" Thick PCB -02 = Use with (3.18 mm) .125" Thick PCB	-L = 10 μm (0.25 μm) Gold on contact, Matte Tin on tail -T = Matte Tin	-VT = Vertical -RA = Right-angle (Screw Down option required)	-SD = Screw Down (Right-angle only)

LEAD STYLE	A
-01	(2.35) .093
-02	(3.95) .156

RUGGEDIZED
BY SAMTEC

• Screw down (right-angle)

CREEPAGE AND CLEARANCE

Selectively loading contacts achieves customer specific creepage and clearance requirements.
Contact asp@samtec.com

PET	NO. PINS PER ROW	LEAD STYLE	PLATING OPTION	TAIL OPTION	OTHER OPTION
	-02, -04, -06, -08	-01 = Use with (1.60 mm) .062" Thick PCB -02 = Use with (3.18 mm) .125" Thick PCB	-L = 10 μm (0.25 μm) Gold on contact, Matte Tin on tail -T = Matte Tin	-VT = Vertical -RA = Right-angle (Screw Down option required)	-SD = Screw Down (Right-angle only)

LEAD STYLE	A
-01	(2.35) .093
-02	(3.95) .156

Due to technical progress, all designs, specifications and components are subject to change without notice.

WWW.SAMTEC.COM

All parts within this catalog are built to Samtec's specifications. Customer specific requirements must be approved by Samtec and identified in a Samtec customer-specific drawing to apply.