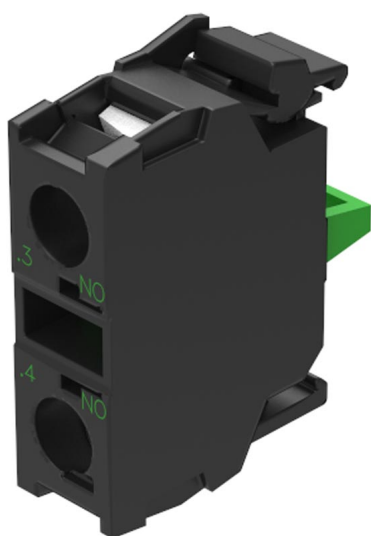


EAO – Your Expert Partner for Human Machine Interfaces

45-311.1X10 - Switching element

45-311.1X10 - Switching element



Attention: The preview is based on a sample product. This can differ from your current configuration.

Other Attributes

Weight 0,010 kg

Connection Method

Terminal Screw terminal

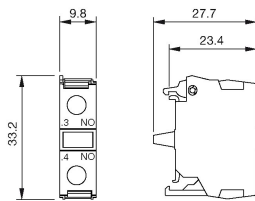
Switching element

Switching current 10 A
Contacts 1 NO
Contact material gold-plated silver
Switching system Slow-make switching element

EAO – Your Expert Partner for Human Machine Interfaces

45-311.1X10 - Switching element

Dimensions



Wiring diagram



Additional information

Front plate mounting