

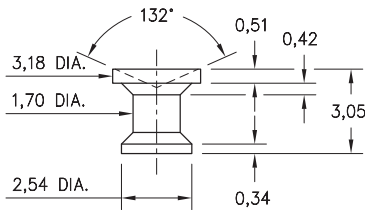
# MALE PCB PINS

## PRINTED CIRCUIT PINS

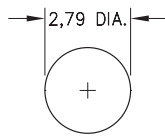
### 1943

1943-0-00-15-00-00-03-0

Concave face Target contact, surface mount  
Also available on 16mm wide carrier tape:  
2,200 parts per 330mm reel.  
See page 224.2 for Tape & Reel details



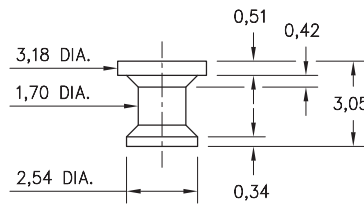
P.C.B. Layout



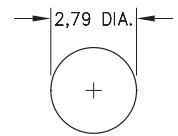
### 1944

1944-0-00-15-00-00-03-0

Flat face Target contact, surface mount  
Also available on 16mm wide carrier tape:  
2,200 parts per 330mm reel.  
See page 224.2 for Tape & Reel details



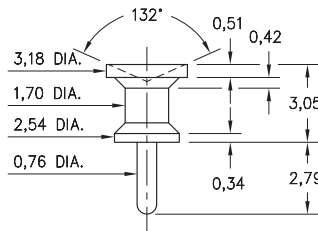
P.C.B. Layout



### 1945

1945-0-00-15-00-00-03-0

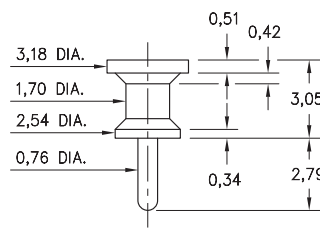
Concave face Target contact, Solder Tail



### 1946

1946-0-00-15-00-00-03-0

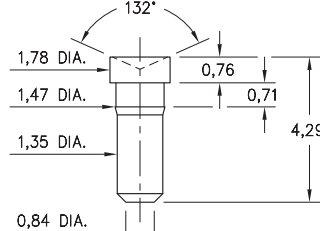
Flat face Target contact, Solder Tail



### 1947

1947-0-00-15-00-00-03-0

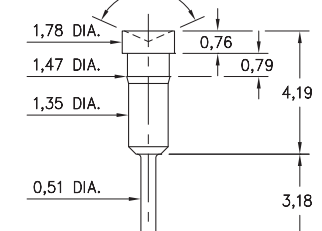
Concave face Target contact, surface mount  
Press-fit in 1,42 mounting hole



### 1948

1948-0-00-15-00-00-03-0

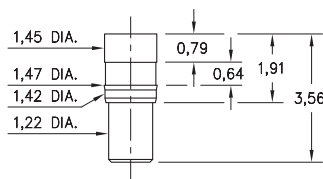
Concave face Target contact, Solder Tail  
Press-fit in 1,42 mounting hole



### 1949

1949-0-00-15-00-00-03-0

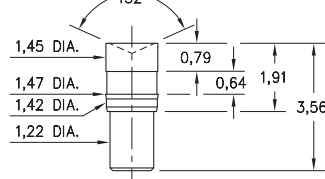
Flat face Target contact, surface mount  
Press-fit in 1,42 mounting hole



### 1950

1950-0-00-15-00-00-03-0

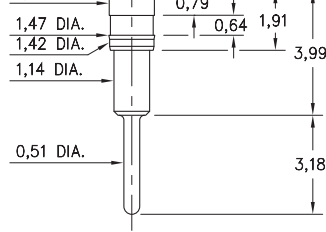
Concave face Target contact, surface mount  
Press-fit in 1,42 mounting hole



### 1951

1951-0-00-15-00-00-03-0

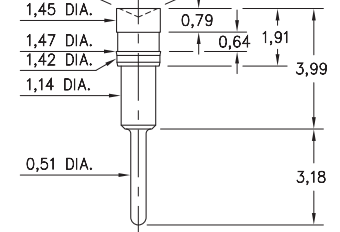
Flat face Target contact, Solder Tail  
Press-fit in 1,42 mounting hole



### 1952

1952-0-00-15-00-00-03-0

Concave face Target contact, Solder Tail  
Press-fit in 1,42 mounting hole



#### SPECIFICATIONS:

**Pin Material:** Brass Alloy 360, 1/2 Hard  
(Except where noted)

**Dimensions:** Inches

**Tolerances On:** Lengths:  $\pm 0,13$   
Diameters:  $\pm 0,051$   
Angles:  $\pm 2^\circ$



ORDER CODE: 194X - 0 - 00 - 15 - 00 - 00 - 03 - 0

BASIC PART #

SPECIFY PIN FINISH:

◆ 15 0,25µm GOLD OVER NICKEL (RoHS)

