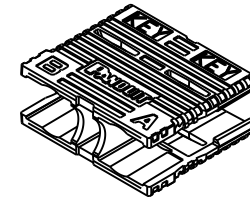
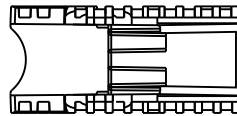
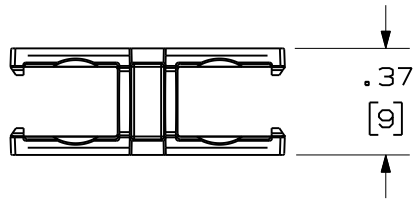
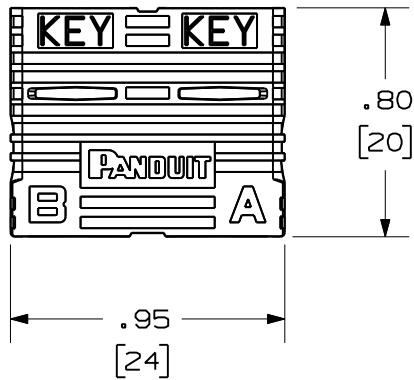



THIS COPY IS PROVIDED ON A RESTRICTED BASIS AND IS NOT TO BE USED IN ANY WAY DETRIMENTAL TO THE INTERESTS OF PANDUIT CORP.

PANDUIT PART NUMBER	WEIGHT
FSCCLIP-L	.176 lb/50 Pcs (79.8 g/50 Pcs.)



NOTES:

1. SEE CURRENT CATALOG FOR ADDITIONAL PART NUMBER SUFFIXES TO INDICATE COLOR AND OR PACKAGE QUANTITY.
2. SEE CATALOG FOR COMPLETE LIST OF PARTS APPLICABLE FOR USE WITH THIS PART.
3. MATERIAL: PLASTIC
4. ALL MATERIALS AND COMPONENTS USED MEET THE MATERIAL RESTRICTIONS OF RoHS, (EUROPEAN DIRECTIVE 2002/95/EC ON THE RESTRICTION OF HAZARDOUS SUBSTANCES) AS PROPOSED BY THE RoHS TECHNICAL ADAPTATION COMMITTEE.
5. DIMENSIONS IN BRACKETS ARE METRIC [mm].

REV	DATE	BY	CHK	DESCRIPTION	ECN	R	CUST	SUP	OTH	DUPLX SC CONNECTOR CLIP CUSTOMER DRAWING			
										 PANDUIT ™ CORP. TINLEY PARK, ILL 60477	ALL DIMENSIONS ARE GIVEN IN INCHES UNLESS OTHERWISE SPECIFIED. DIMENSIONAL TOLERANCES ARE: (.X) ±.010 (.3) (.XX) ±.03 (0.8) ANGLES	DRAWING FILENAME MO1339BI_DC_05A.prt SCALE	
													THIRD ANGLE PROJECTION
R	11-01-07		MC	RELEASED TO PRODUCTION	01339-02					DRAWN BY MC DATE 07-25-07 CHK'D	REVIEW DRAWING NUMBERS	DRAWING NO. 01339-02	SIZE A