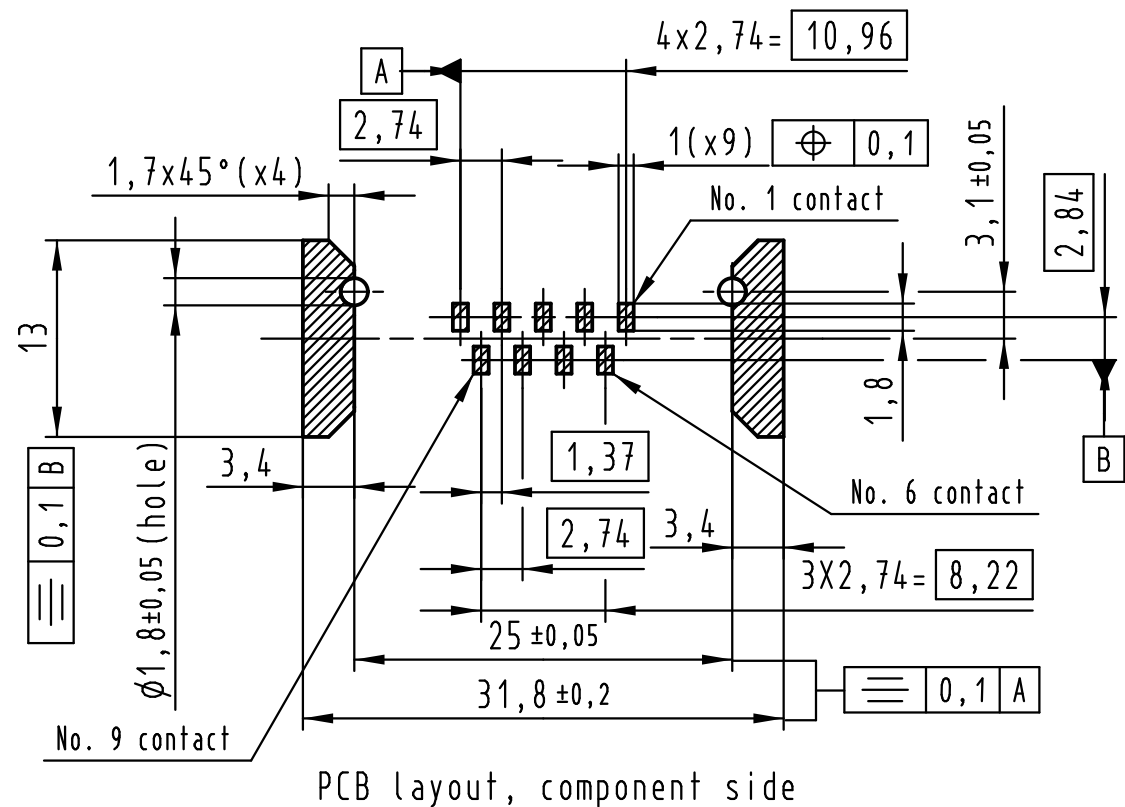
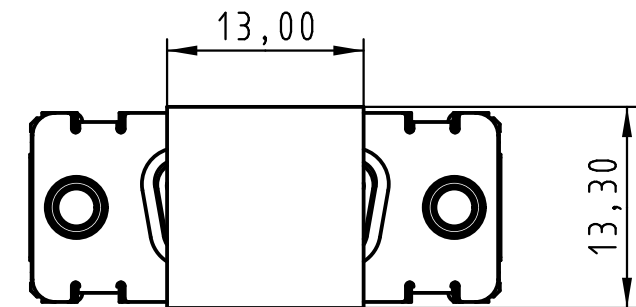
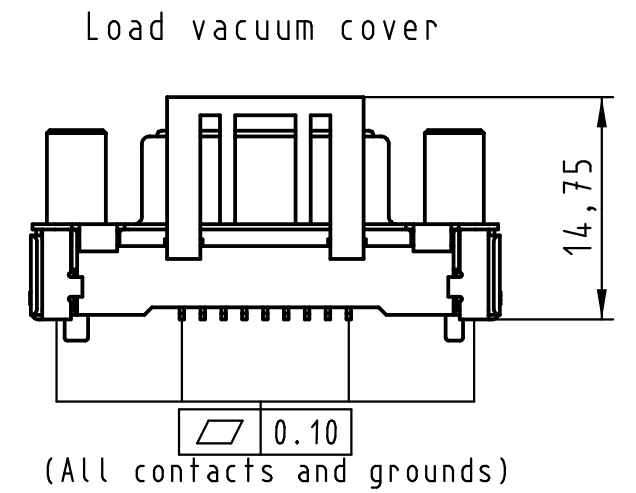
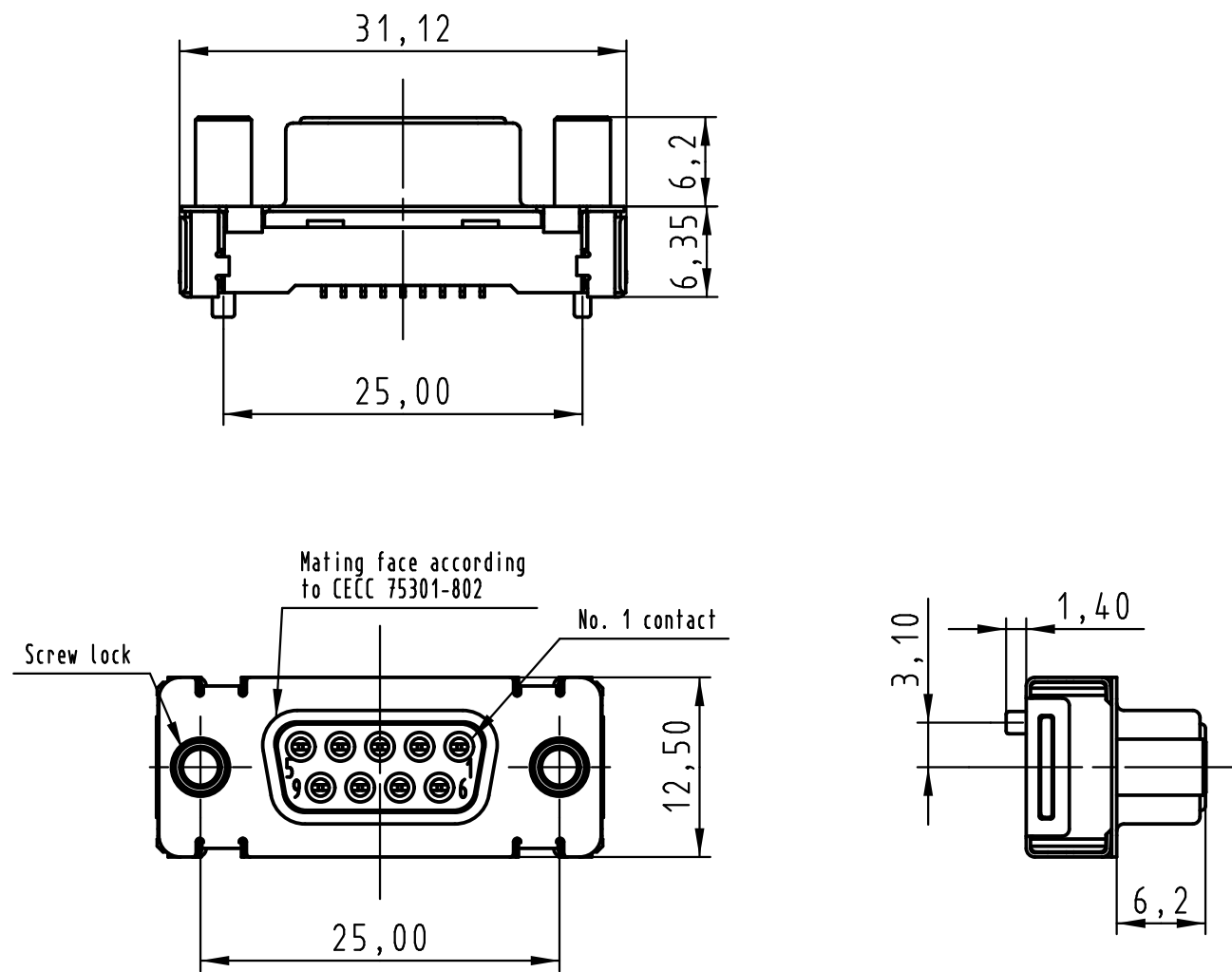


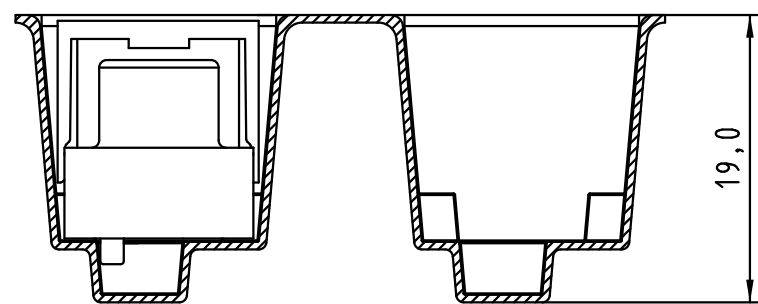
All rights reserved



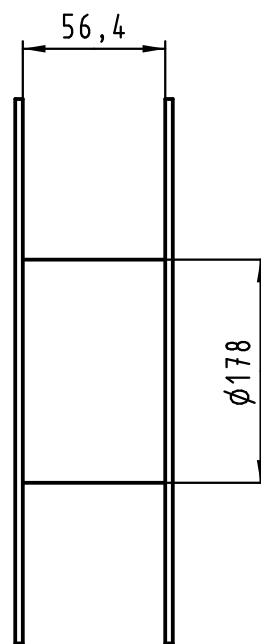
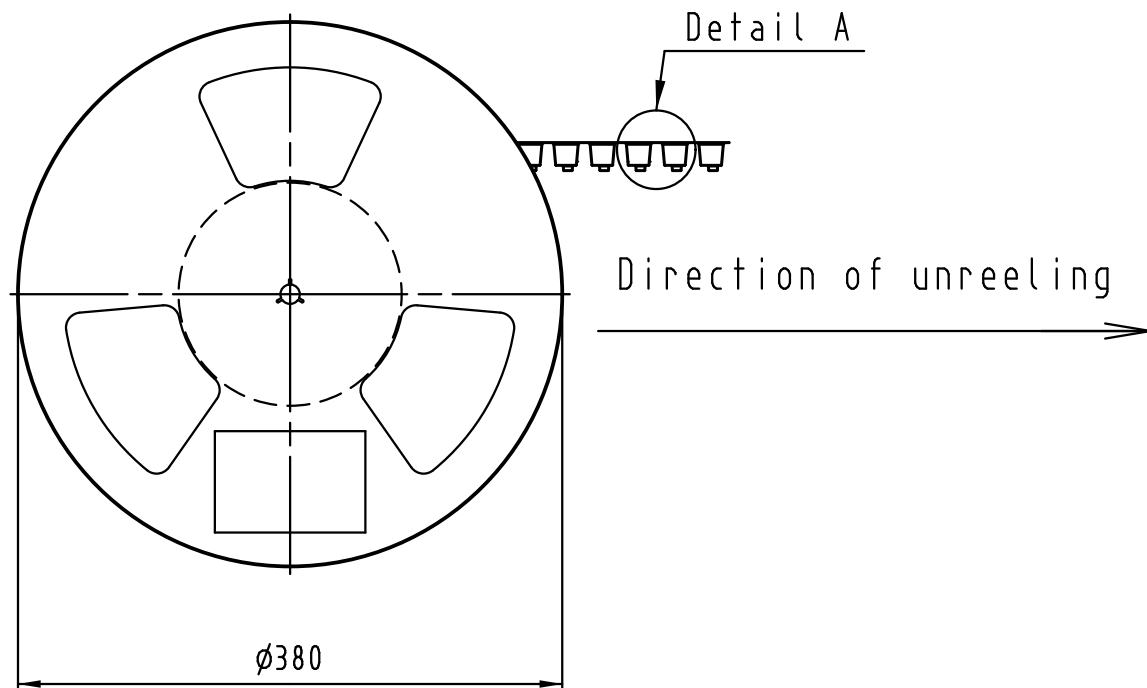
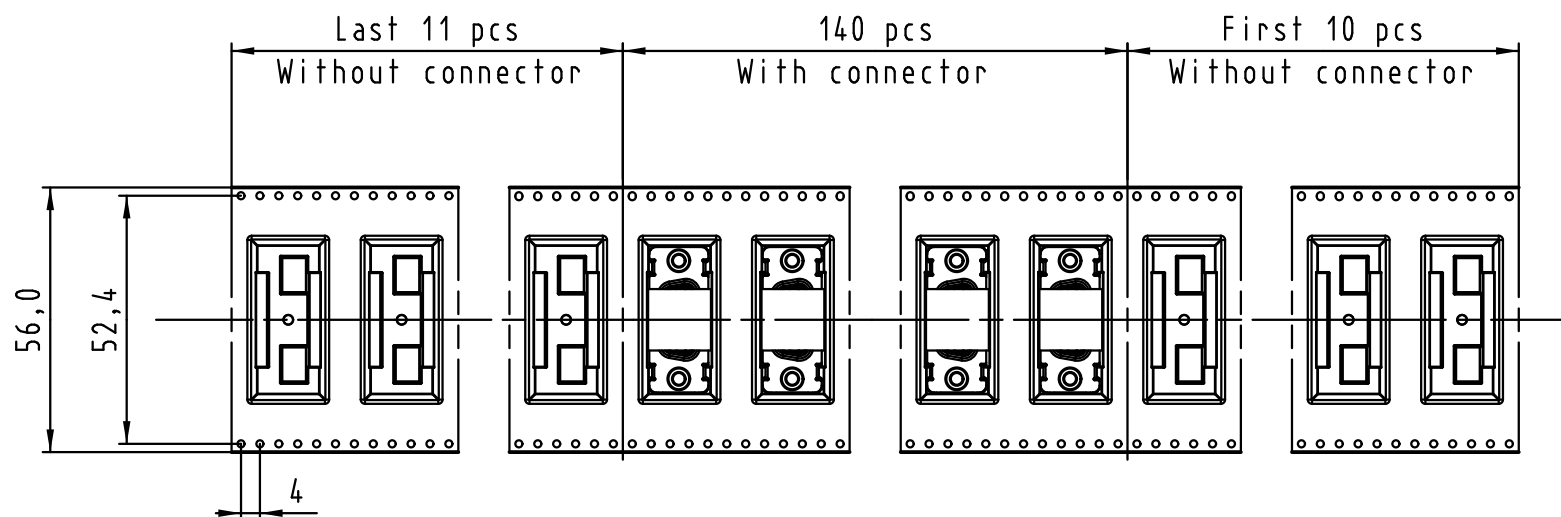
Max. Temperature: 260° during 10 seconds.

| | | | | |
|-------------------|-----------|-------------------|------------------------|---|
| 0955 115 3621 741 | 1 | M3 | Black insulator | Reel Packaging: 140 connectors (See details on page2/2) |
| 0955 115 3622 741 | 1 | 4-40 UNC | | |
| 0955 115 6621 741 | 2 | M3 | | |
| 0955 115 6622 741 | 2 | 4-40 UNC | | |
| 0955 115 7621 741 | 3 | M3 | | |
| 0955 115 7622 741 | 3 | 4-40 UNC | | |
| Part number | PL | Screw lock | Index designation | |
| | | Techn. Character. | Free size tolerances | |
| | | Dat. | Name | Scale |
| | | Detail. | 14-Sep-11 Johnson.S | 2:1 |
| | | Insp. | 17-Nov-11 Steven.W | |
| | | Stand. | 17-Nov-11 Steven.W | |
| EC04070 | 17-Nov-11 | Johnson.S | Zhuhai HARTING Limited | |
| Mod. | Dat. | Name | TB 09 55 115 x62x | Page 1/2 |
| | | | Sub. | 2 |

All rights reserved



Detail A



See TB 09 55 115 x62x folio 1/2 for connector dimensions and PCB layout

Packaging in accordance with EIA 481-2.

| | | | | |
|-------------------|----|------------|-------------------|-----------------------------------|
| 0955 115 3621 741 | 1 | M3 | Black insulator | Reel Packaging: 140 connectors |
| 0955 115 3622 741 | 1 | 4-40 UNC | | |
| 0955 115 6621 741 | 2 | M3 | | |
| 0955 115 6622 741 | 2 | 4-40 UNC | | |
| 0955 115 7621 741 | 3 | M3 | | |
| 0955 115 7622 741 | 3 | 4-40 UNC | | |
| Part number | PL | Screw lock | Index designation | |

| | | | | | | | | |
|---------|---|-----------|------------------------|-------------------|--|-------------------|--|--|
| | All Dimensions in mm Original Size DIN A 3 | | | Techn. Character. | | | Free size tolerances | |
| | | | | | | | D-Sub SMT, 9 poles Female, Straight with screw locks and ground pads | |
| | | | | | | | | |
| | | | | | | | | |
| EC04070 | 17-Nov-11 | Johnson.S | Zhuhai HARTING Limited | | | TB 09 55 115 x62x | | |
| Mod. | Dat. | Name | | | | Sub. Page 2/2 | | |