

4

3

2

1

THIS DRAWING IS UNPUBLISHED.

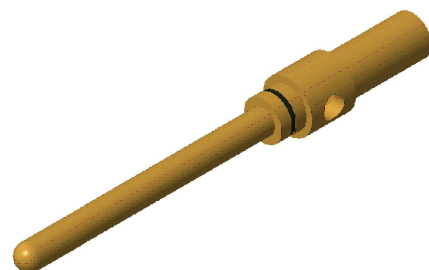
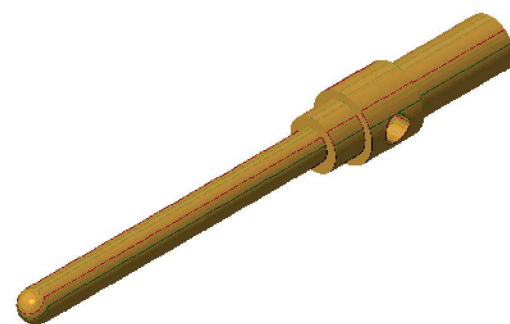
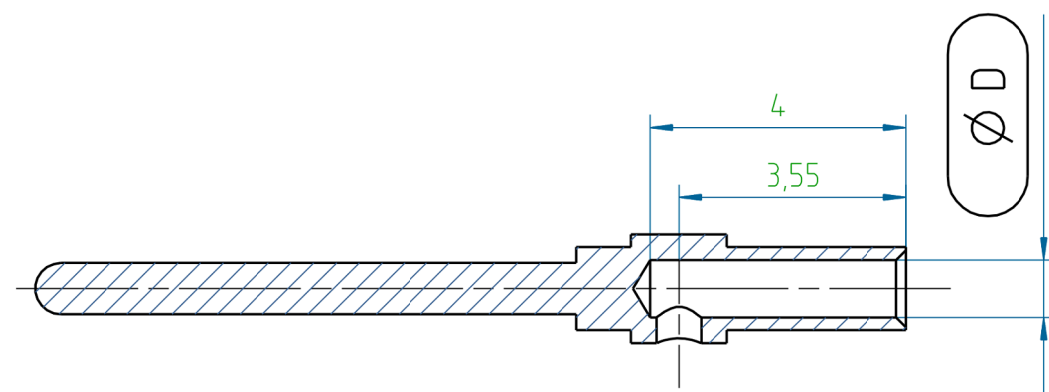
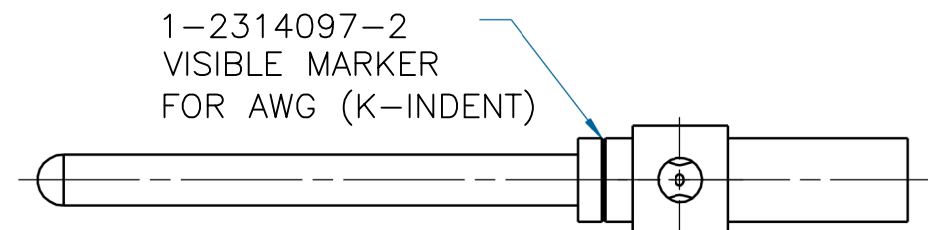
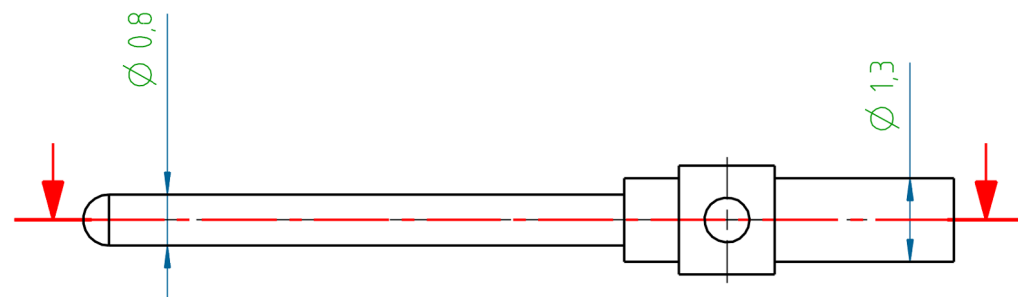
RELEASED FOR PUBLICATION

REVISIONS

© COPYRIGHT - By - ALL RIGHTS RESERVED.

P	LTR	DESCRIPTION	DATE	DWN	APVD
	A1	REVISED PER ECR-16-014891	09JAN2017	KK	SE

PROJECT	PRJ-14-000004825
PART NO.	X-2314097-X
DESCRIPTION	M12 CRIMP CONTACT PIN 0.8mm AWG22/AWG26
CUSTOMER	GENERAL MARKET



SL.NO	PART NO.	PART NAME	ØD	MATERIAL	SURFACE TREATMENT	REMARKS
2	1-2314097-2	M12 CRIMP CONTACT PIN A 0.8MM AWG26 (AU08)	0.6	BRASS	1.5-2.5µm Ni/0.8µmAu	K-INDENT
1	1-2314097-1	M12 CRIMP CONTACT PIN A 0.8MM AWG22 (AU08)	0.9			-

THIS DRAWING IS A CONTROLLED DOCUMENT.		DWN KIRAN K 06DEC2016	STE TE Connectivity		
		CHK KIRAN K 06DEC2016			
DIMENSIONS: mm		APVD S EGBERT 06DEC2016	NAME M12 CRIMP CONTACT PIN 0.8mm AWG22/AWG26		
TOLERANCES UNLESS OTHERWISE SPECIFIED: DIN ISO 2768 m		PRODUCT SPEC 108-156001	APPLICATION SPEC		
0 PLC ± - 1 PLC ± - 2 PLC ± - 3 PLC ± - 4 PLC ± - ANGLES ± -		APPLICATION SPEC 114-156002	SIZE A3	CAGE CODE 00779	DRAWING NO C=2314097
MATERIAL -		FINISH -	WEIGHT	RESTRICTED TO -	
CUSTOMER DRAWING			SCALE NTS	SHEET 1 OF 1	REV A1

NOTES:
1. APPLICATION TOOLING TO BE USED
601967-1 (STANDARD) OR
601966-1 (COMPACT).

1-2314097-1

1-2314097-2