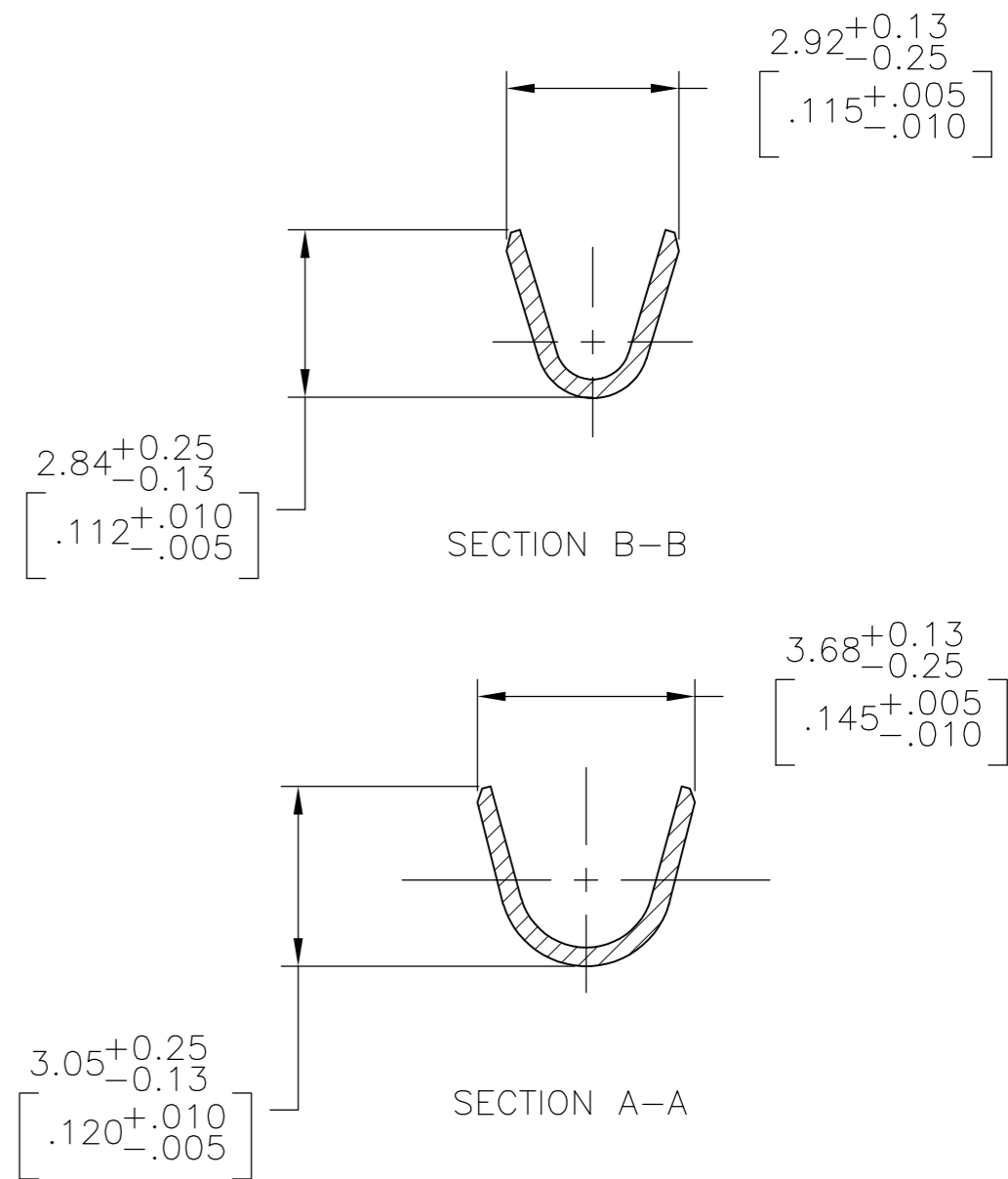
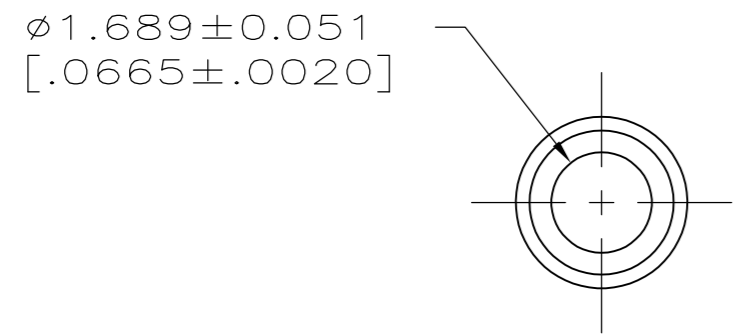
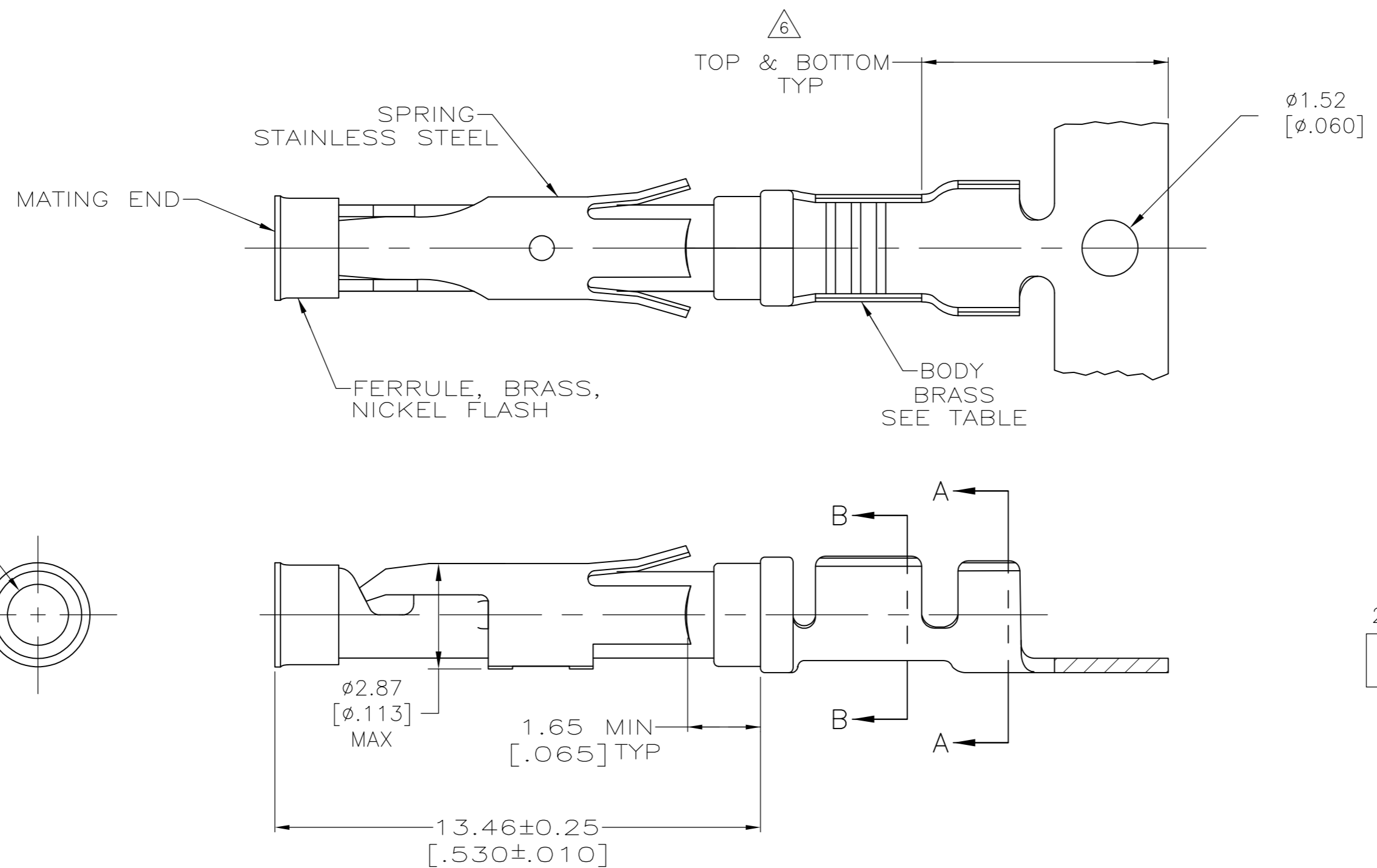


THIS DRAWING IS UNPUBLISHED. RELEASED FOR PUBLICATION
 © COPYRIGHT - By - ALL RIGHTS RESERVED.

| REVISIONS | | | | |
|-----------|-----|---------------------------|-----------|-------|
| P | LTR | DESCRIPTION | DATE | APVD |
| AM2 | | REVISED PER ECO-16-014786 | 19OCT2016 | RS MZ |



- 1 0.76µm [.000030] MIN GOLD PER MIL-G-45204 ON MATING END FOR A LENGTH OF 5.08 [.200] MIN WITH 1.27µm [.000050] MIN MATTE TIN PLATE IN WIRE CRIMP AREA, BOTH OVER 0.76µm [.000030] MIN NICKEL PER QQ-N-290.
- 2 1.27µm [.000050] MIN TIN-LEAD PER MIL-T-10727 OVER 0.76µm [.000030] MIN NICKEL PER QQ-N-290.
- 3 0.76µm [.000030] MIN GOLD PER MIL-G-45204 ON MATING END FOR A LENGTH OF 5.08 [.200] MIN WITH A UNIFORM GRADIENT TO 0.25µm [.000010] MIN GOLD PER MIL-G-45204 ON THE REMAINDER OVER 0.76µm [.000030] MIN NICKEL PER QQ-N-290.
- 4 0.38µm [.000015] MIN GOLD PER MIL-G-45204 ON MATING END FOR A LENGTH OF 5.08 [.200] MIN WITH 1.27µm [.000050] MIN MATTE TIN PLATE IN WIRE CRIMP AREA, BOTH OVER 0.76µm [.000030] MIN NICKEL PER QQ-N-290.
- 5 1.27µm [.000050] MIN GOLD PER MIL-G-45204 ON MATING END FOR A LENGTH OF 5.08 [.200] MIN WITH GOLD FLASH ON REMAINDER OVER 1.90µm [.000075] MIN NICKEL PER QQ-N-290.
- 6 GOLD PLATING NEED NOT APPEAR IN THIS AREA EXCEPT 1-66100-3 HAS GOLD PLATING ON INSULATION BARREL.
- 7 REVERSE REELED FOR MINI-APPLICATOR.
- 8 ALL PART NUMBERS ON THIS DRAWING HAVE APPLICATION TOOLING AVAILABLE TO CRIMP 18-16 WIRE AWG WITH AN INSULATION RANGE OF Ø2.03-2.54 [.080-.100]. ADDITIONALLY, LOOSE PIECE AND REVERSE REELED PART NUMBERS HAVE APPLICATION TOOLING AVAILABLE TO CRIMP 0.75mm² WIRE WITH AN INSULATION RANGE OF Ø1.35-1.65 [.053-.065] OR 1.0mm² WIRE WITH AN INSULATION RANGE OF Ø1.45-1.80 [.057-.071].
- 9 0.38µm [.000015] MIN GOLD PER MIL-G-45204 ON MATING END FOR A LENGTH OF 5.08 [.200] MIN, 1.27µm [.000050] MIN TIN-LEAD PER MIL-T-10727 FOR A LENGTH OF 5.69 [.224] MIN ON OPPOSITE END, BOTH OVER 1.27µm [.000050] MIN NICKEL PER QQ-N-290 ON ENTIRE CONTACT.

SUPERCEDED BY 66100-8

| OBSOLETE | EUROPE | 7 | 10 | NONE | —2-66100-2— |
|----------|----------------------|----------|-------------|-----------------|-------------|
| OBSOLETE | | 7 | 1 | NONE | —2-66100-1— |
| | | STANDARD | 10 | 1-66101-9 | 2-66100-0 |
| | | 7 | 10 | 1-66101-9 | 1-66100-9 |
| | | 7 | 9 | 1-66101-4 | —1-66100-7— |
| | | — | 5 | — | —1-66100-3— |
| | | 7 | 1 | 66101-4 | 66100-9 |
| | | 7 | 4 | 66101-3 | 66100-8 |
| | | 7 | 2 | 66101-2 | 66100-7 |
| | | 7 | 3 | 66101-1 | 66100-6 |
| | | STANDARD | 1 | 66101-4 | 66100-4 |
| | | STANDARD | 4 | 66101-3 | 66100-3 |
| | | STANDARD | 2 | 66101-2 | 66100-2 |
| | | STANDARD | 3 | 66101-1 | 66100-1 |
| | TE ASSEMBLY LOCATION | REELING | BODY FINISH | LOOSE PIECE REF | PART NO. |

THIS DRAWING IS A CONTROLLED DOCUMENT.

| | | | |
|-----------------------------|---------------------|------------|----------------------------------|
| DWN V. FURLER 11JUL03 | | NAME | SOCKET ASSEMBLY, .062, TYPE III+ |
| CHK G. STEINHAEUER 11JUL03 | | SIZE | A2 |
| APVD G. STEINHAEUER 11JUL03 | | CAGE CODE | 00779 |
| PRODUCT SPEC | | DRAWING NO | C=66100 |
| MATERIAL SEE CALLOUTS | FINISH SEE CALLOUTS | WEIGHT | RESTRICTED TO |
| CUSTOMER DRAWING | | SCALE | 8:1 |
| | | SHEET | 1 of 1 |
| | | REV | AM2 |