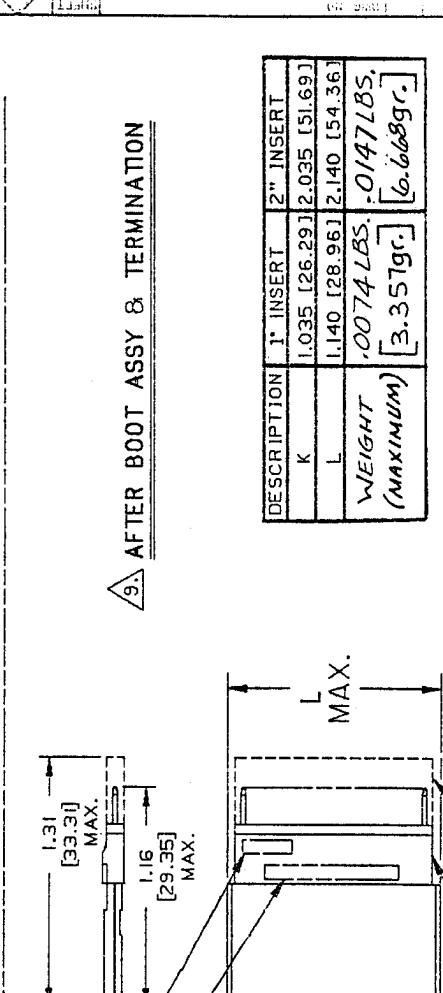
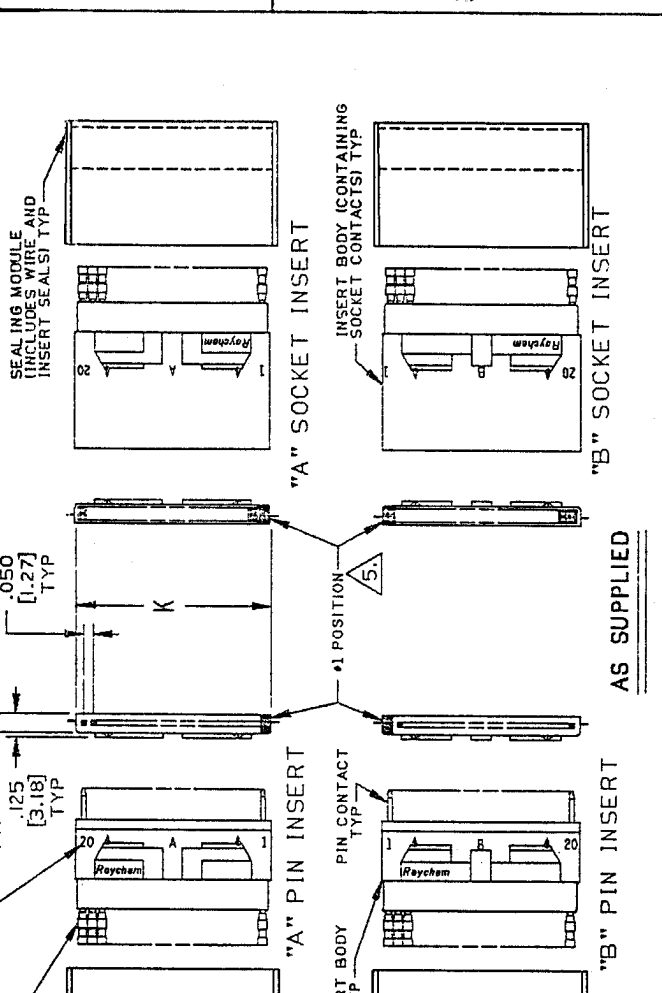


REVISIONS	DESCRIPTION	DATE	APPROVED
C	REVISE PER DCR# T-30858	5/13/2002	M. PIOZET



NOTES:

1. PART NUMBER VARIABLE:
MTC50-YXX-XXX

015 = PIN INSERT
016 = SOCKET INSERT

1 = 1" INSERT
2 = 2" INSERT

A = 'A' INSERT
B = 'B' INSERT

2. THE APPLICABLE TYCO ELECTRONICS SPECIFICATION FOR THIS PART IS C6111. THIS PART IS QUALIFIED TO C6111.

3. MATERIAL:
SEE SCD CTA-024X
TRANSPARENT BLUE HEAT SHRINKABLE, RADIATION CROSS-LINKED PVF
B. WIRE AND INSERT SEALS: MODIFIED THERMOPLASTIC HOT MELT SEALANT.
C. INSERT BODY: HIGH GRADE POLYARYLENE THERMOPLASTIC OR EQUIVALENT.
D. PIN/SOCKET CONTACTS: COPPER ALLOY 172 PER QQ-C-533. SEE RAYCHEM SPECIFICATION CONTROL DRAWING D-141-0169.

4. FINISH:
A. PIN/SOCKET INSERT: AS MOLDED
B. PIN/SOCKET CONTACT: (ENGAGING END)
(TERMINATION END)

5. #1 POSITION IS MARKED IN CONTRASTING COLOR.
6. DIELECTRIC WITHSTANDING VOLTAGE:

TEST CONDITION	TEST VOLTAGE VAC RMS AT 60 HZ.
SEA LEVEL	750
ALTITUDE 70,000 FT. (33.5 TORR) AMBIENT TEMP.	250
ALTITUDE 80,000 FT. (20.6 TORR) -50°C TEMP.	375

7. CURRENT RATING: 2.0 AMPS

8. USABLE WIRE SIZE:
ROUND WIRE: 24 AWG OR 26 AWG.

9. SEE TYCO ENGINEERING STANDARD ES-61408 REV C FOR TERMINATION METHOD.

DESCRIPTION	1" INSERT	2" INSERT
K	1.035 [26.29]	2.035 [51.69]
L	1.140 [28.96]	2.140 [54.36]
WEIGHT (MAXIMUM)	.0074 LBS. [3.357gr.]	.0147 LBS. [6.6689gr.]

SPECIFICATION CONTROL DRAWING

TYCO ELECTRONICS
RAYCHEM PRODUCTS
365 CONSTRUCTION DR.
MENLO PARK, CA 94025

TITLE
INSERT, .050 PITCH, PASS TERM.
125°C OPERATING TEMPERATURE
(FOR 24-26 AWG WIRE)
MTC50 SERIES

UNLESS OTHERWISE SPECIFIED DIMENSIONS ARE IN INCHES. METRIC DIMENSIONS ARE IN BRACKETS.
DECIMALS
.XXX ±0.05 [0.13mm]
.XX ±0.3 [0.08mm]
ANGLES
.X ± .9

DRAWN: S. CLEGG
CHECKED: M. HIGBY
APPROVED: M. BLAIR
DATE: 07-APR-88

CAD FILE: T-30858.TIF

THIRD ANGLE PROJECTION

WEIGHT: SEE TABULATION

SCALE: DO NOT SCALE THIS DRAWING

REV: C
CODE IDENT. NO.: 06090
DRG. NO.: MTC50-YXX-015/016
SHEET 1 OF 1