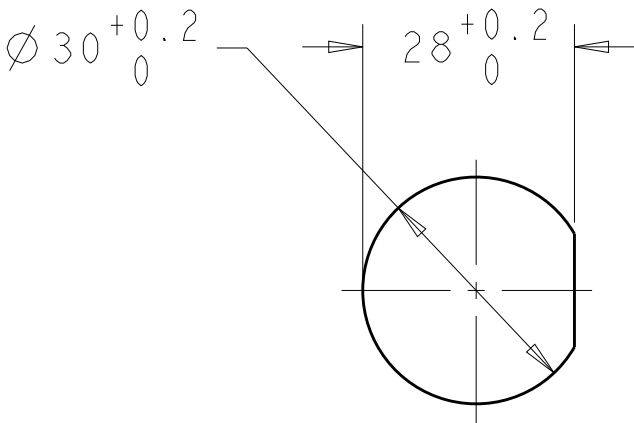
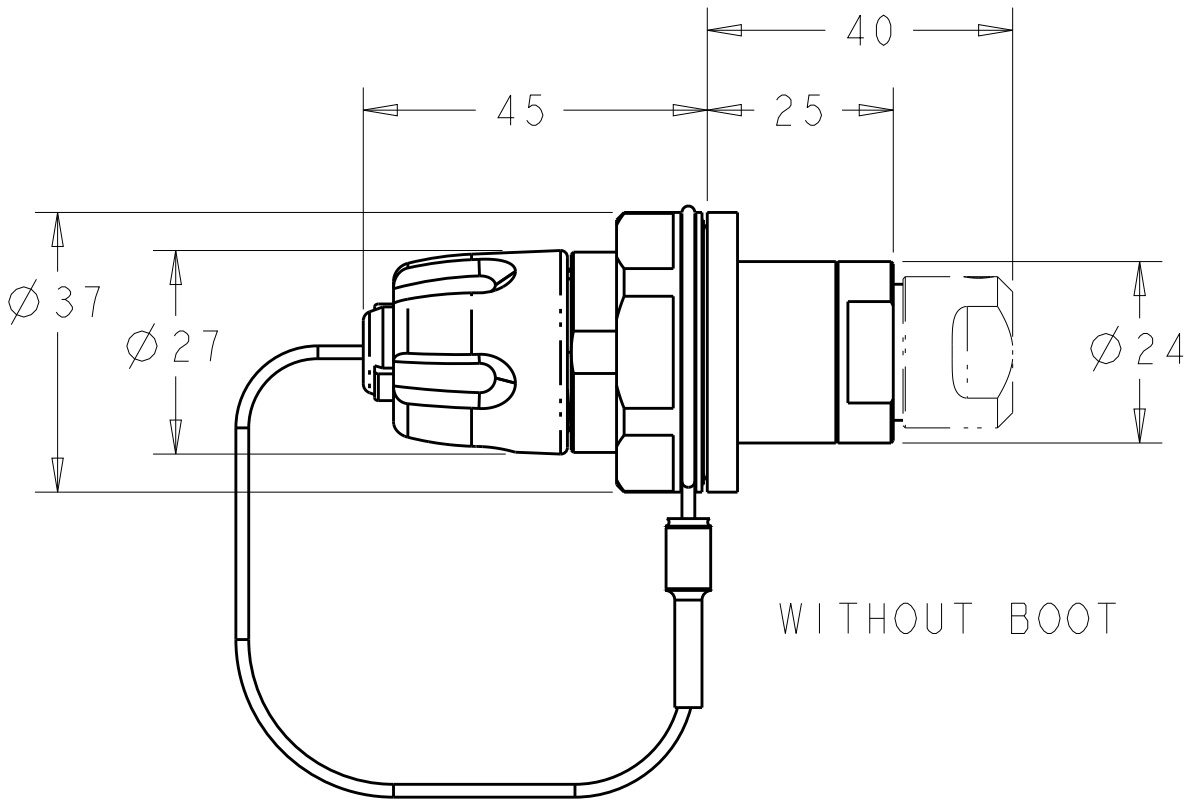
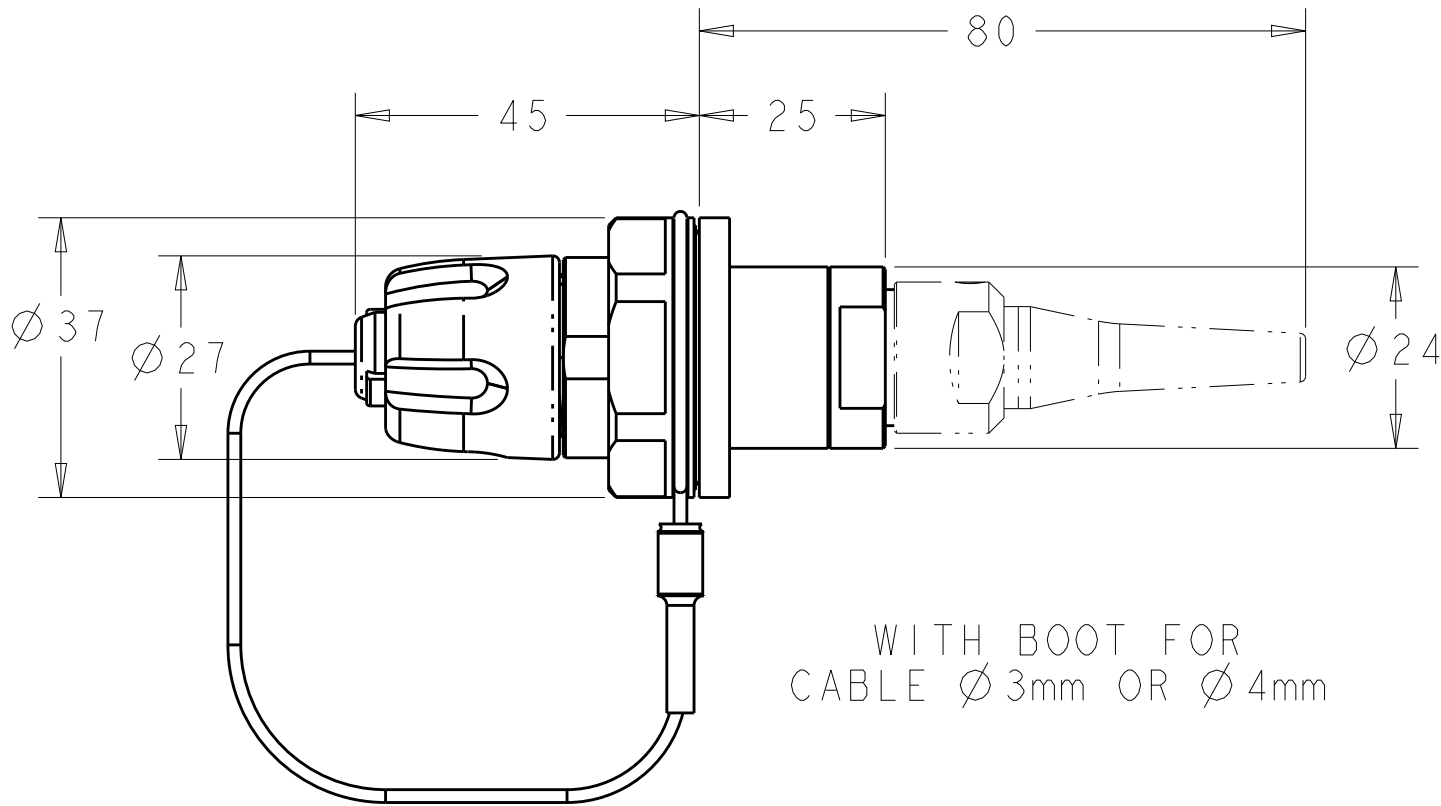
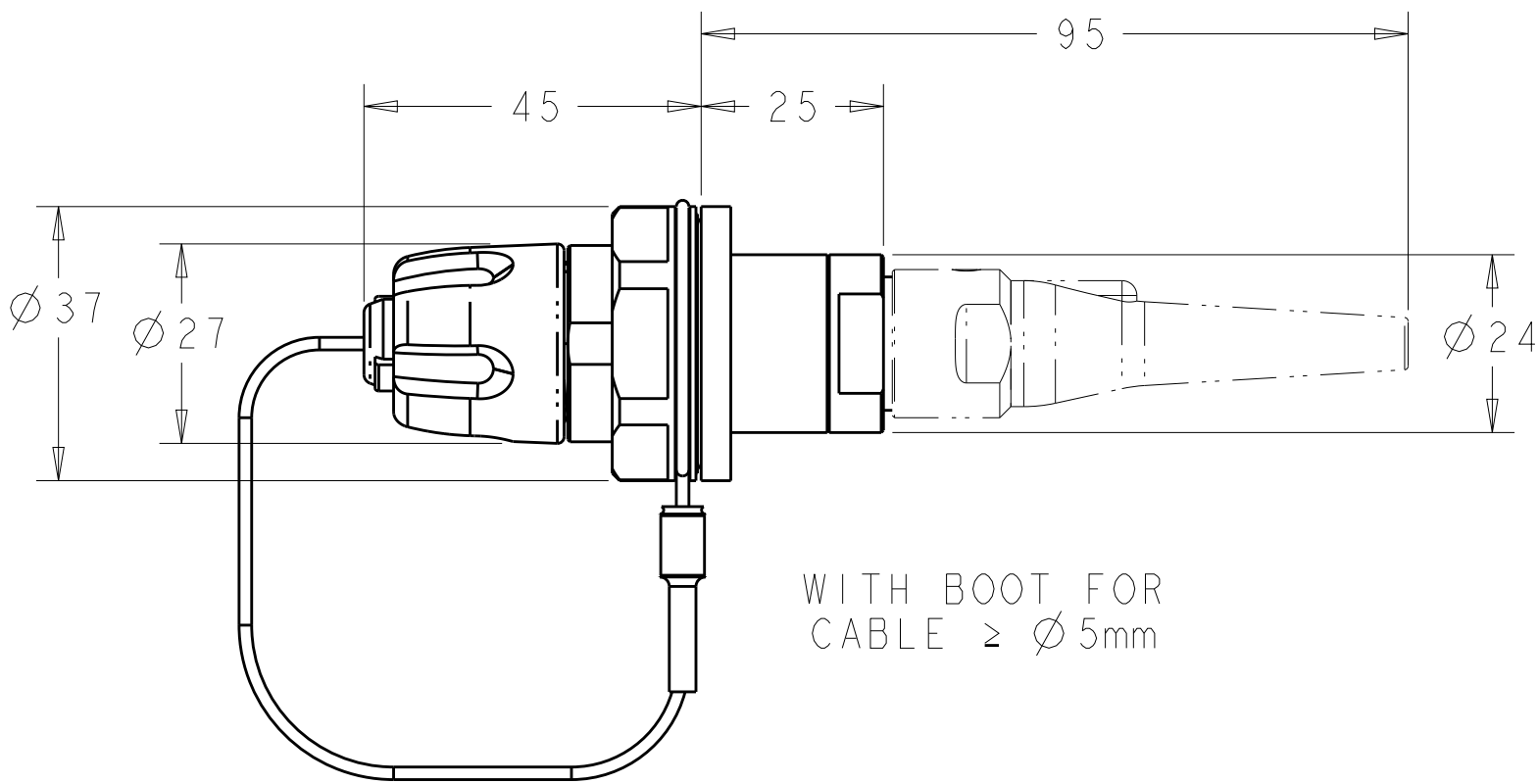


1. ASSEMBLY SHOWN FOR REFERENCE ONLY.  
SHIPPED LOOSE PIECE AS SHOWN ON PAGE 2.
2. ALL ASSEMBLY DIMENSIONS ARE FOR REFERENCE ONLY.
3. PANEL THICKNESS: 1mm MINIMUM, 6.5mm MAXIMUM.  
TIGHTEN PANEL NUT OF INSTALLED CONNECTOR TO  
40 N-m (29.5 FT-LB) FOR BEST PERFORMANCE.
4. COMPLETE THE CONNECTOR ASSEMBLY BY ADDING EACH OF  
THE FOLLOWING PRO BEAM JR KITS:  
A. EXPANDED BEAM INSERT ASSEMBLY KIT  
B. CABLE ADAPTER KIT, SIZED TO THE CABLE  
JACKET DIAMETER  
C. FERRULE KIT, ONE PER FIBER

P	LTR	DESCRIPTION	DATE	DWN	APVD
	B	ECR-17-013282	19SEP2017	KG	DW



RECOMMENDED PANEL 3 CUT-OUT



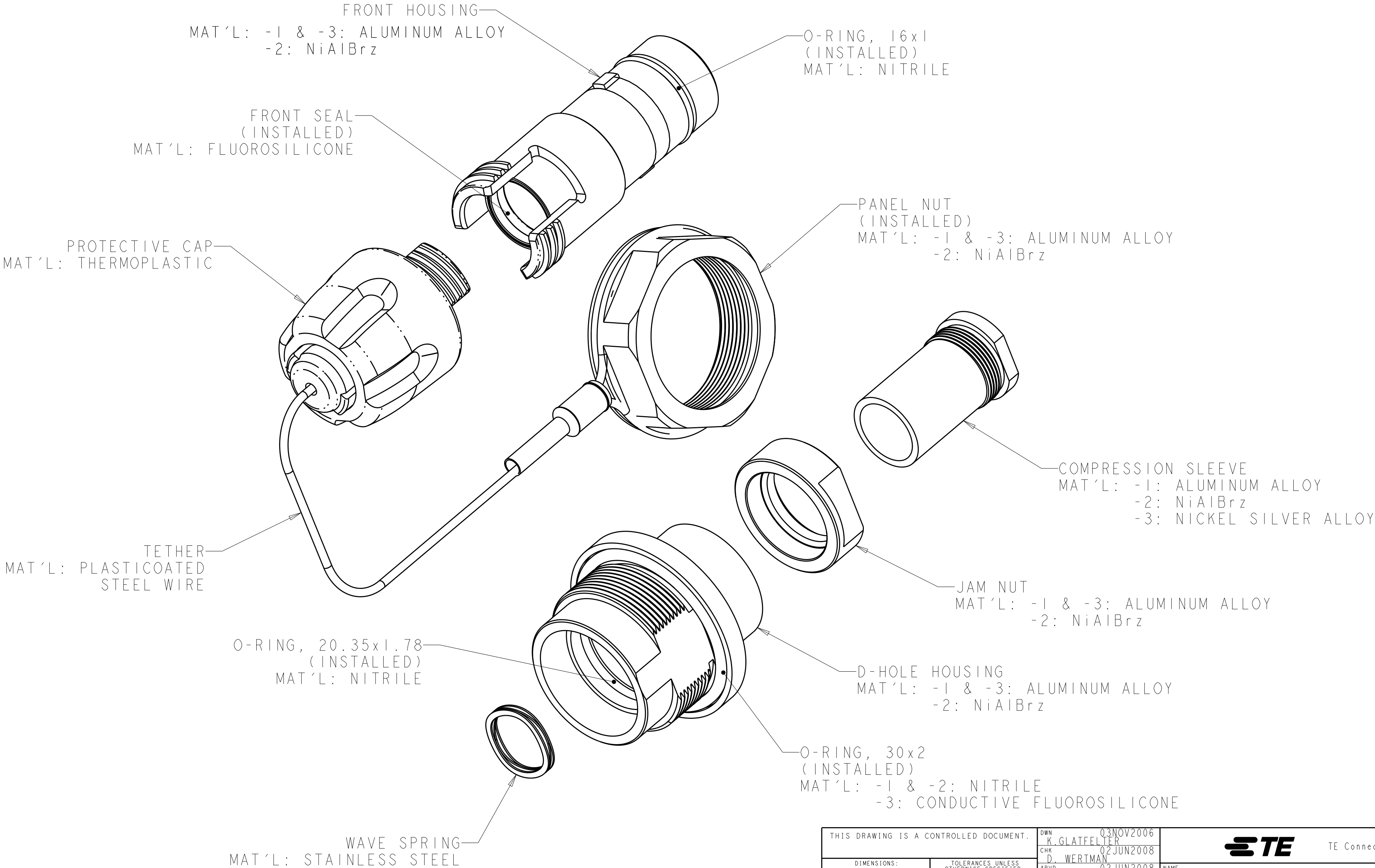
CONDUCTIVE BLACK ZINC NICKEL	ALUMINUM	1918939-3
NONE	NICKEL ALUMINUM BRONZE	1918939-2
NON-CONDUCTIVE HARD ANODIZE	ALUMINUM	1918939-1
HOUSING PLATING	HOUSING ALLOY	PART NUMBER

THIS DRAWING IS A CONTROLLED DOCUMENT.		DWN 03NOV2006 K. GLATFELTER	TE Connectivity	
DIMENSIONS:		CHK 02JUN2008 D. WERTMAN		
mm	TOLERANCES UNLESS OTHERWISE SPECIFIED:	APVD 02JUN2008 D. WERTMAN	NAME	
	0 PLC ±	PRODUCT SPEC	CONNECTOR SHELL KIT, STD D-HOLE BULKHEAD, PRO BEAM JR.	
	1 PLC ±	APPLICATION SPEC		
	2 PLC ±	WEIGHT		
	3 PLC ±	CUSTOMER DRAWING		
MATERIAL	4 PLC ±	SCALE	SIZE	RESTRICTED TO
-	ANGLES ±	1:1	A200779C-1918939	-
-	FINISH	SHEET	DRAWING NO	REV
		1	2	B

VIEWS SHOWN WITH CABLE ADAPTER  
VARIATIONS IN PHANTOM LINES FOR  
VISUAL AND DIMENSIONAL PURPOSES ONLY

REVISIONS					
P	LTR	DESCRIPTION	DATE	DWN	APVD
	-	SEE SHEET 1	-	-	-

1. SHIPPED LOOSE PIECE AS SHOWN.



THIS DRAWING IS A CONTROLLED DOCUMENT.

DWN  
K. GLATFELTER  
03NOV2006

CHK  
D. WERTMAN  
02JUN2008

APVD  
D. WERTMAN  
02JUN2008

PRODUCT SPEC

APPLICATION SPEC

WEIGHT

CUSTOMER DRAWING

TE Connectivity

NAME  
CONNECTOR SHELL KIT, STD D-HOLE  
BULKHEAD, PRO BEAM JR.

SIZE  
A2

CAGE CODE  
00779

DRAWING NO  
C-1918939

RESTRICTED TO

SCALE  
1:1

SHEET  
2

OF  
2

REV  
B