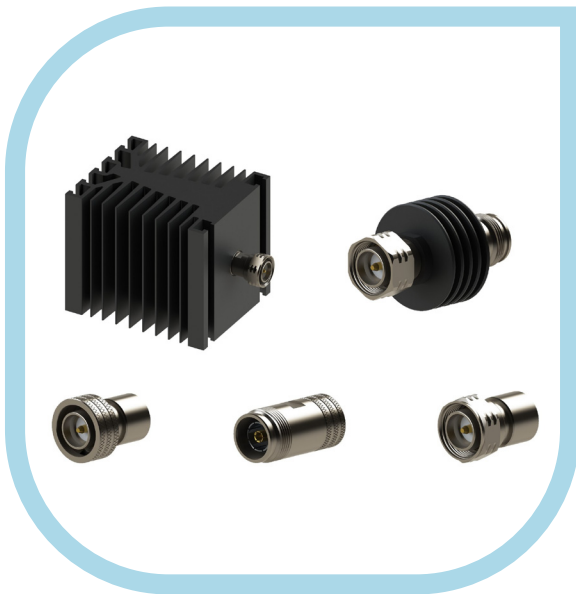


4.3-10 Termination & Attenuator Series

High performance microwave solution

Radiall offers a new series of microwave components equipped with 4.3-10 connectors which include terminations up to 100W and attenuators up to 15W, for applications such as telecom base station integration and microwave power testing.



Following the commercialization of the 4.3-10 series of connectors, Radiall developed a global range of microwave components equipped with 4.3-10, including terminations up to 100W and attenuators up to 15W. These terminations are available from low power (2W) up to high power (100W) at 6 GHz maximum frequency and provide outstanding electrical performance.

The design of the low power version supports outdoor usage: terminations are compliant with several environmental testing requirements (vibration, shock...) and are IP67 rated. Attenuators are available up to 15W with 6 GHz maximum frequency. These new attenuators are IP65 rated and feature a robust design which makes them perfectly suited for severe environmental conditions.

4.3-10 terminations & attenuators are part of Radiall's global 4.3-10 offer which includes a variety of coaxial connectors and all types of microwave components.



Radiall 4.3-10 terminations and attenuators are the perfect solution for integration of microwave components in telecom base stations and power testing.

High performance microwave solution

Part Number	Gender	Connectors	Frequency (GHz)	Power (W)	Accessory
R4041D1000	M	4.3-10 Screw	DC-4	2	
R4041D1121	M	4.3-10 Screw	DC-4	2	Cord
R4041D2000	M	4.3-10 Push	DC-4	2	
R4041D2121	M	4.3-10 Push	DC-4	2	Cord
R4041D5000	F	4.3-10	DC-4	2	
R404758000	M	4.3-10 Screw	DC-6	30	
R404759000	F	4.3-10	DC-6	30	
R404768000	M	4.3-10 Screw	DC-6	50	
R404769000	F	4.3-10	DC-6	50	
R404778000	M	4.3-10 Screw	DC-6	100	
R404779000	F	4.3-10	DC-6	100	

Part Number	Gender	Connectors	Frequency (GHz)	Attenuation	Power (W)
R415603000	M/F	4.3-10 Screw	DC-6	3 dB	15
R415606000	M/F	4.3-10 Screw	DC-6	6 dB	15
R415610000	M/F	4.3-10 Screw	DC-6	10 dB	15
R415620000	M/F	4.3-10 Screw	DC-6	20 dB	15

Features & Benefits

- Global range of 4.3-10 terminations & attenuators up to 100W
- 6 GHz maximum frequency with excellent VSWR performance
- Robust design

Applications

- Telecom base station integration
- Microwave power testing