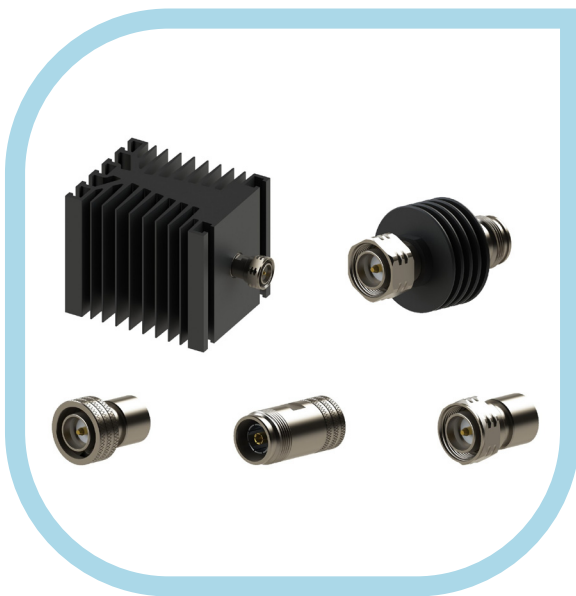


4.3-10 Termination & Attenuator Series

High performance microwave solution

Radiall offers a new series of microwave components equipped with 4.3-10 connectors which include terminations up to 100W and attenuators up to 15W, for applications such as telecom base station integration and microwave power testing.



Following the commercialization of the 4.3-10 series of connectors, Radiall developed a global range of microwave components equipped with 4.3-10, including terminations up to 100W and attenuators up to 15W. These terminations are available from low power (2W) up to high power (100W) at 6 GHz maximum frequency and provide outstanding electrical performance.

The design of the low power version supports outdoor usage: terminations are compliant with several environmental testing requirements (vibration, shock...) and are IP67 rated. Attenuators are available up to 15W with 6 GHz maximum frequency. These new attenuators are IP65 rated and feature a robust design which makes them perfectly suited for severe environmental conditions.

4.3-10 terminations & attenuators are part of Radiall's global 4.3-10 offer which includes a variety of coaxial connectors and all types of microwave components.



Radiall 4.3-10 terminations and attenuators are the perfect solution for integration of microwave components in telecom base stations and power testing.

High performance microwave solution

| Part Number | Gender | Connectors | Frequency (GHz) | Power (W) | Accessory |
|-------------|--------|--------------|-----------------|-----------|-----------|
| R4041D1000 | M | 4.3-10 Screw | DC-4 | 2 | |
| R4041D1121 | M | 4.3-10 Screw | DC-4 | 2 | Cord |
| R4041D2000 | M | 4.3-10 Push | DC-4 | 2 | |
| R4041D2121 | M | 4.3-10 Push | DC-4 | 2 | Cord |
| R4041D5000 | F | 4.3-10 | DC-4 | 2 | |
| R404758000 | M | 4.3-10 Screw | DC-6 | 30 | |
| R404759000 | F | 4.3-10 | DC-6 | 30 | |
| R404768000 | M | 4.3-10 Screw | DC-6 | 50 | |
| R404769000 | F | 4.3-10 | DC-6 | 50 | |
| R404778000 | M | 4.3-10 Screw | DC-6 | 100 | |
| R404779000 | F | 4.3-10 | DC-6 | 100 | |

| Part Number | Gender | Connectors | Frequency (GHz) | Attenuation | Power (W) |
|-------------|--------|--------------|-----------------|-------------|-----------|
| R415603000 | M/F | 4.3-10 Screw | DC-6 | 3 dB | 15 |
| R415606000 | M/F | 4.3-10 Screw | DC-6 | 6 dB | 15 |
| R415610000 | M/F | 4.3-10 Screw | DC-6 | 10 dB | 15 |
| R415620000 | M/F | 4.3-10 Screw | DC-6 | 20 dB | 15 |

Features & Benefits

- Global range of 4.3-10 terminations & attenuators up to 100W
- 6 GHz maximum frequency with excellent VSWR performance
- Robust design

Applications

- Telecom base station integration
- Microwave power testing