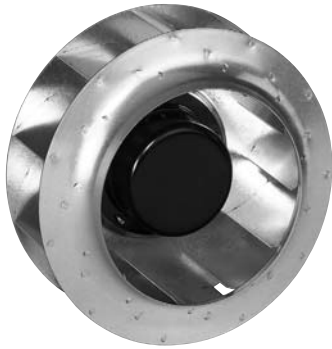


# R1G280 Series

Motorized Impeller



## Ø 280mm Backward Curved

- These centrifugal fans have backward curved blades offering an extremely good aerodynamic efficiency
- Impeller completely made of sheet aluminium.
- Wiring connection: Red = + ; Blue = - ; White = Tach Output; Yellow = Speed Control
- Integrated electronics with reverse polarity and locked-rotor protection. Rotation is CW. Tach Output. Cable exit: variable.
- UL, CSA, VDE approvals on most models, please contact application engineering.
- Recommended inlet ring: 96360-2-4013.

Part Number	Curve	CFM @ 0	VDC	Volt. Range	Power (W)	dBA	Max. Amb. Temp C	Bearing Type	Speed (RPM)	Impeller Material	Wgt. (lbs)
R1G280-AE45-52	1	1031	24	16 to 28	95	71	60	Ball	1710	Galv. Steel	6.00
R1G280-AE47-52	1	1031	48	36 to 57	95	71	60	Ball	1710	Galv. Steel	6.00

