

NOTES:

1. ELECTRICAL SPECIFICATIONS:

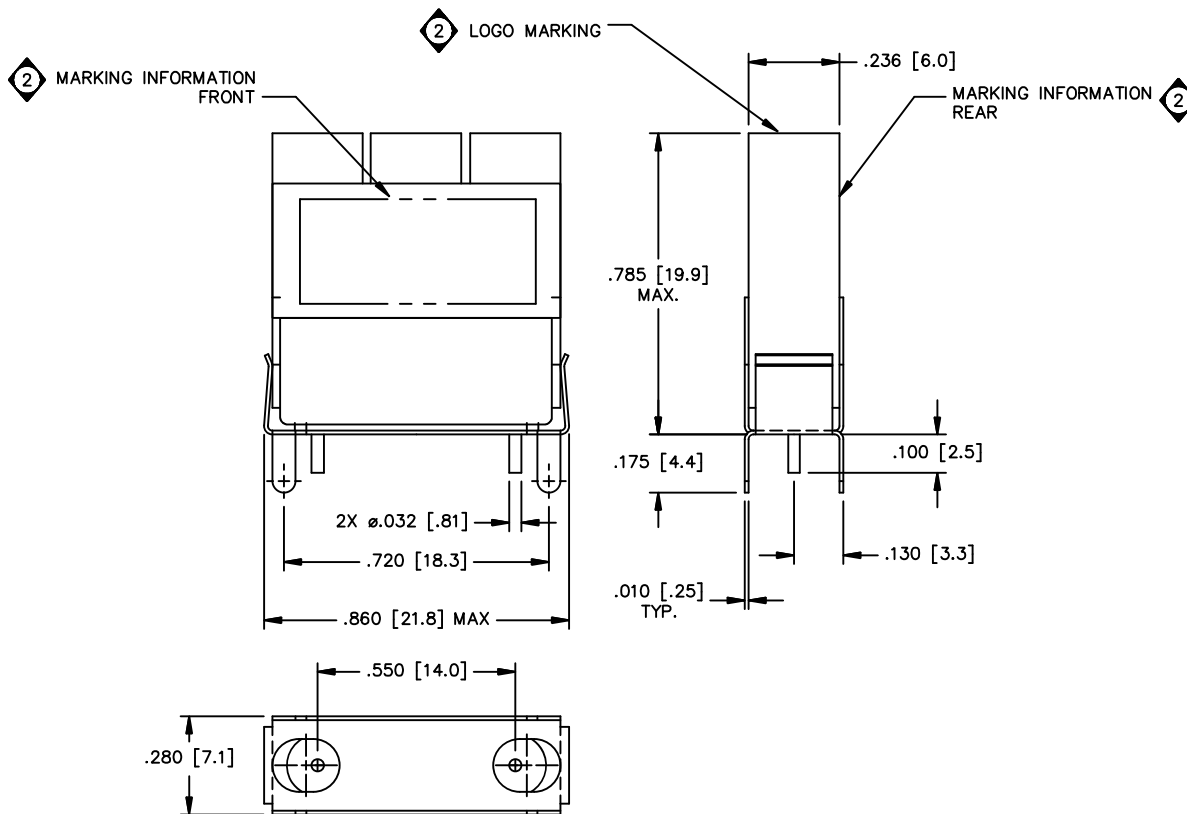
C.F. = 427.25 MHz
 INSERTION LOSS @ C.F. = 3.0 dB MIN., 5.0 dB MAX.
 IMPEDANCE: 75 OHMS IN/OUT
 RETURN LOSS = 14 dB MIN. @ 427.25 MHz
 RIPPLE = 0.2 dBc MAX. WITHIN ±0.5 MHz OF C.F.
 ATTENUATION: ⊙ Fo: ±6 MHz @ 18 dBc MIN.
 ⊙ Fo: ±12 MHz @ 28 dBc MIN.
 ⊙ Fo: ±18 MHz @ 45 dBc MIN.
 ⊙ Fo: ±50 MHz @ 40 dBc MIN.
 FROM 50 TO 300 MHz @ 35 dBc MIN.
 FROM 750 TO 862 MHz @ 30 dBc MIN.

2. ENVIRONMENTAL SPECIFICATIONS:

OPERATING TEMPERATURE: -40° TO +85° C
 STORAGE TEMPERATURE: -40° TO +90° C

3. PART MUST BE MARKED WITH C-COR PART NUMBER.

REVISIONS				
ECN	REV.	DESCRIPTION	CHNG/DATE	APPV/D/DATE
06642	1	CHANGED SHIELD DIM	MY, 2008-09-08	FG, 2008-09-08
07992	2	MARKING INFO	MDP, 2015-08-25	MPN, 2015-08-25



UNLESS OTHERWISE SPECIFIED

1. UNLESS OTHERWISE SPECIFIED	ANSI	3RD ANGLE PROJECTION
2. DIMENSIONS ARE GIVEN IN INCHES UNLESS OTHERWISE SPECIFIED	DRW/N	DATE 2004-07-20
3. DIMENSIONS ARE GIVEN IN MILLIMETERS UNLESS OTHERWISE SPECIFIED	CHECKED	
4. DIMENSIONS ARE GIVEN IN MILLIMETERS UNLESS OTHERWISE SPECIFIED	ENGR/	DATE 2004-07-20
5. DIMENSIONS ARE GIVEN IN MILLIMETERS UNLESS OTHERWISE SPECIFIED	WFO	
6. DIMENSIONS ARE GIVEN IN MILLIMETERS UNLESS OTHERWISE SPECIFIED	QA	
7. DIMENSIONS ARE GIVEN IN MILLIMETERS UNLESS OTHERWISE SPECIFIED	APPROVED	DATE 2004-07-20
8. DIMENSIONS ARE GIVEN IN MILLIMETERS UNLESS OTHERWISE SPECIFIED	SB	

SIZE	CAGE CODE	DRG NO.	REV.
C	67195	STO-4892	0
SCALE	4:1	SHEET	1 OF 1

API TECHNOLOGIES CORP. 7100 Columbia Gateway Drive Columbia, MD 21046-2957 (USA)			
SALES DRAWING, BPF3-0427-005LA			

API TECHNOLOGIES CORP. PROPRIETARY INFORMATION
 THIS DOCUMENT IS THE SOLE PROPERTY OF API TECHNOLOGIES CORP.
 THE RELEASE OF DATA CONTAINED IN THIS DOCUMENT AND THE
 REPRODUCTION OF THIS DOCUMENT IN WHOLE OR IN PART, WITHOUT THE
 WRITTEN PERMISSION OF API TECHNOLOGIES CORP. ARE PROHIBITED.