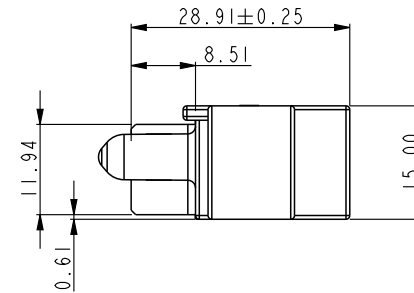
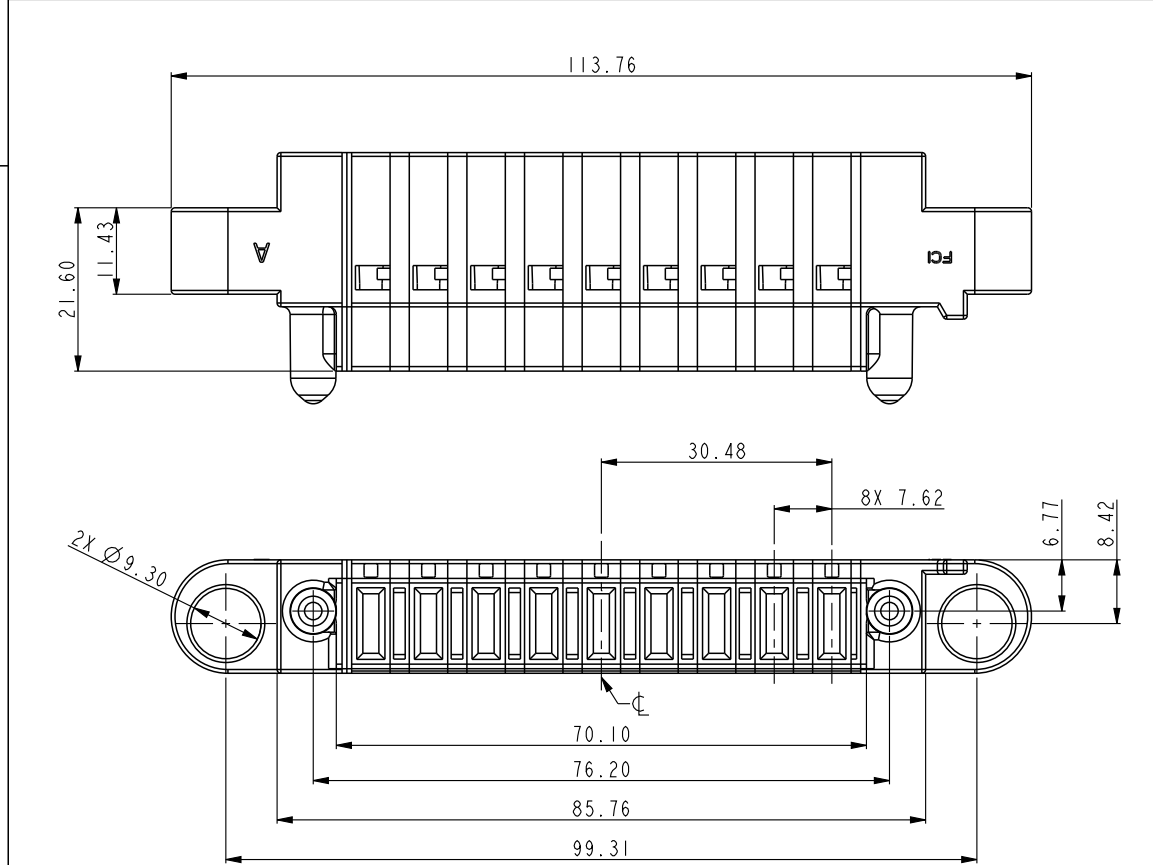
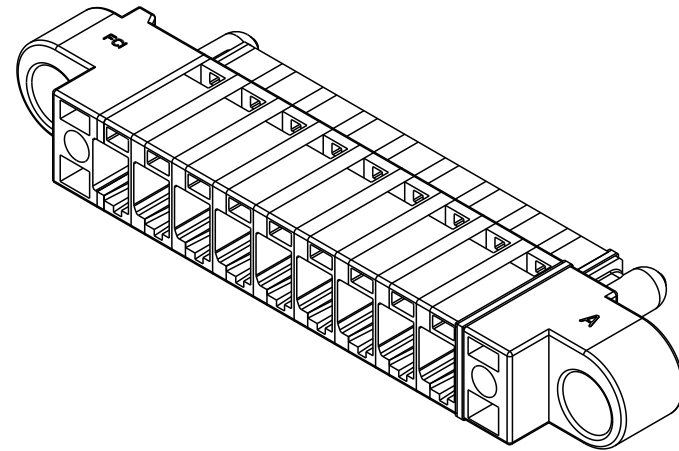
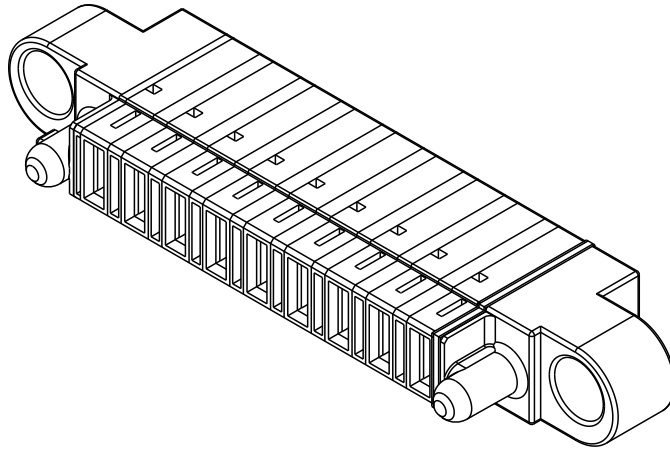


PART NUMBER	ROWS	E	POWER										E
10066440-DGC0011LF	D		P9	P8	P7	P6	P5	P4	P3	P2	P1		
	C		FM	FM	FM	FM	FM	FM	FM	FM	FM		
	B												
	A												



CONTACT WIRE TABLE	
CONTACT PITCH	WIRE GAUGE
7.62	8-9
6.35	10-11
	12-14
5.08	12-14
2.54	22-26
CONTACT TABLE	
CODE	DESCRIPTION
FM	FIRST MATE CONTACT
LM	LAST MATE CONTACT
S	SIGNAL CONTACT

spec ref		*		dr		Yong Zhang		2016/02/23		projection		MM		size		A4		scale		1:1																	
tolerance std		TOLERANCES UNLESS OTHERWISE SPECIFIED				eng		Yong Zhang		2016/02/26						ecn no		-																			
						chr		-		-																											
						appr		Guo-Feng Jin		2016/02/26												product family		PWRBLADE		rel level		Released									
surface		linear		0.X		±0.5		Amphenol FCI		title						9ACP PM						dwg no						10066440-DGC001ILF						rev		A	
				0.XX		±0.25																															
				0.XXX		±0.10																															
		angular		0°		±2°		www.fci.com		cat. no.						10066440						Product - Customer Drw						sheet 1 of 2									



## Note:

1. Material:thermo plastic,ul94 v-0
2. Bulkhead thickness range:0.79-2.54
3. Color:black
4. Applicable components  
Applicable power crimp contact: 10132418-\*\*\*\*\*LF  
Applicable contact secondary lock:10073097-DGC001LF  
Applicable signal contact 76347-DGC302LF  
Applicable latch 10066441-DGC001LF for STR version
5. Product Spec: GS-12-474
6. Application Spec: GS-20-0445
7. The part is been sold as loose piece and fci guarantees is the part in compliance with this customer drawing statement. The product spec for cable assembly can be only as the reference document because the testing and spec is based on using fci raw cable and cable asseymble. If the raw cable and cable assembly is outside suppliers sourced by cusotmers, customers or cable assembly suppliers should be fully resposnsible for the cable assy quality.

spec ref				*				dr		Yong Zhang		2016/02/23		projection		MM		size		A4		scale		1:1																									
tolerance std				TOLERANCES UNLESS OTHERWISE SPECIFIED								eng		Yong Zhang		2016/02/26						ecn no				-																							
												chr		-		-																																	
												appr		Guo-Feng Jin		2016/02/26						product family						PWRBLADE				rel level				Released													
												surface										linear		0.X		±0.5		<b>Amphenol FCI</b>						title						9ACP PM						PwrBlade Cable Housing			
0.XX		±0.25																																															
0.XXX		±0.10																																															
angular		0°		±2°																																													
								www.fci.com		cat. no.		10066440		Product - Customer Drw						sheet 2 of 2																													