

FCI CONFIDENTIAL

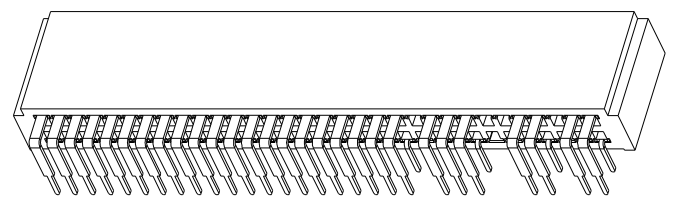
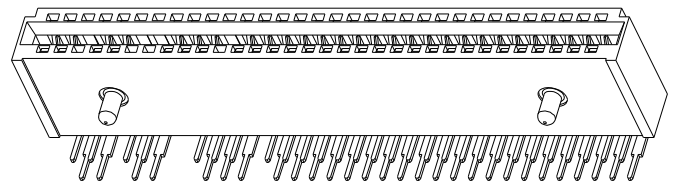


This document is the property of and embodies CONFIDENTIAL and PROPRIETARY information of FCI. No part of the information shown on this document may be used in any way or disclosed to others without the written consent of FCI. Copyright FCI.

PRODUCT NO.	POSITION
10053363-700LF	2X32

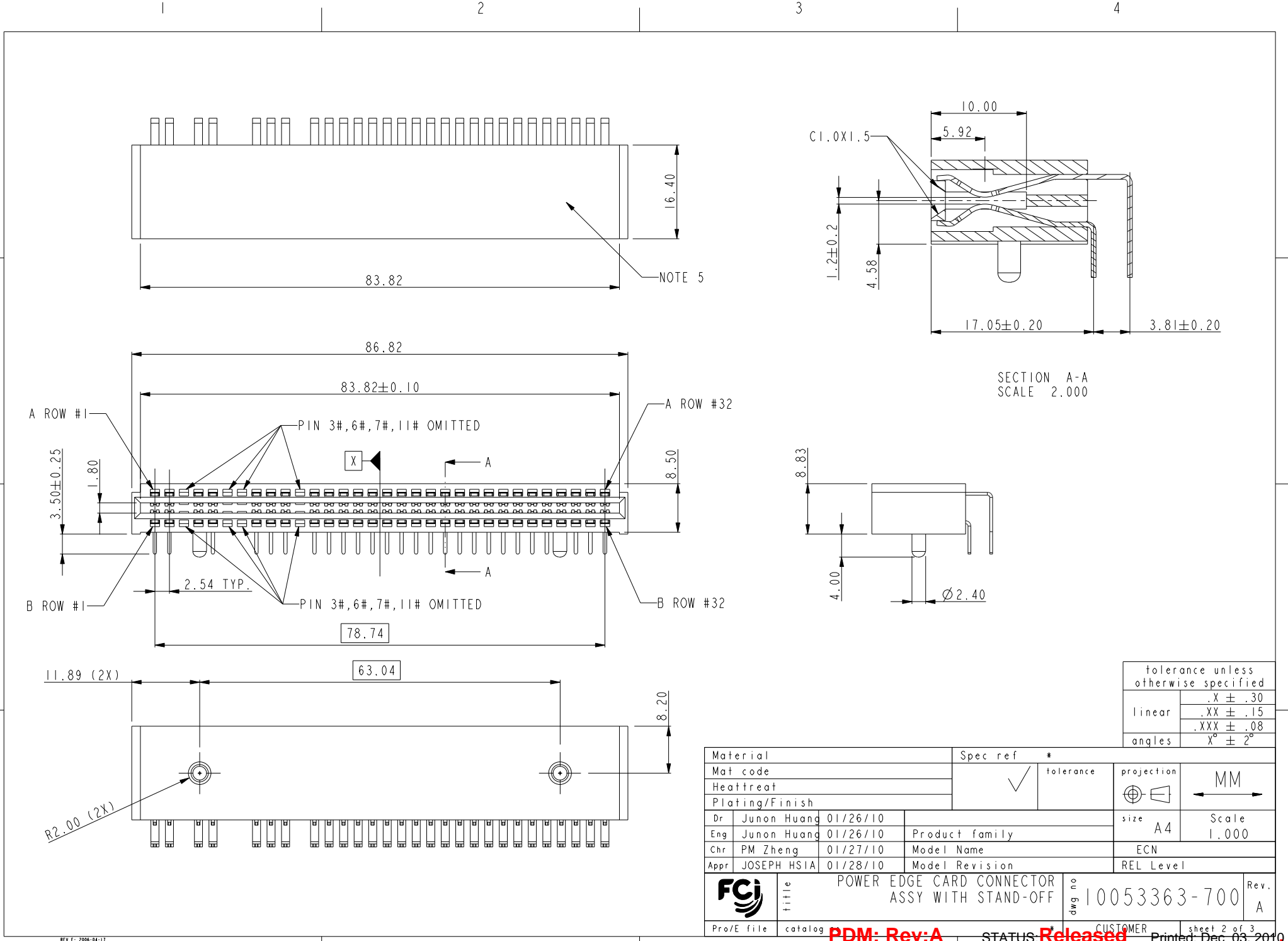
NOTES:

- MATERIALS:  
HOUSING: HIGH TEMPERATURE THERMOPLASTIC, UL 94V-0 RATED, BLACK.  
TERMINAL: HIGH CONDUCTIVITY COPPER ALLOY.  
CONTACT AREA: 30u" GOLD OVER 50u" NICKEL UNDERPLATED.  
SOLDER TAIL: 100u" TIN OVER 50u" NICKEL UNDERPLATED.
- PRODUCT PERFORMANCE SPEC. PER GS-12-259.
- PACKAGE SPECIFICATION PER GS-14-937.
- PART NUMBER 10053363-700LF MEETS EUROPEAN UNION DIRECTIVE AND OTHER COUNTRY REGULATIONS AS DESCRIBED IN GS-22-008. THE HOUSING WILL WITHSTAND EXPOSURE TO 260°C±5°C PEAK TEMPERATURE FOR 5 SECONDS IN A REFLOW SOLDER APPLICATION WITH A CIRCUIT BOARD.
- MANUFACTURER'S NAME, P/N AND DATE CODE TO APPEAR ON THIS SURFACE AS PER GS-24-007.



tolerance unless otherwise specified	
linear	.X ± .30 .XX ± .15 .XXX ± .08
angles	X° ± 2°

Mark with REV. in area indicated by X.....	Material		Spec ref	
	Mat code	Heatreat	tolerance	projection
	Plating/Finish		size	Scale
Dr Junon Huang 01/26/10	Product family		A4	1.000
Eng Junon Huang 01/26/10	Model Name		ECN	
Chr PM Zheng 01/27/10	Model Revision		REL Level	
Appr JOSEPH HSIA 01/28/10	title		dwg no	Rev.
	POWER EDGE CARD CONNECTOR ASSY WITH STAND-OFF		10053363-700	A
	Pro/E file	catalog	CUSTOMER	sheet 1 of 3

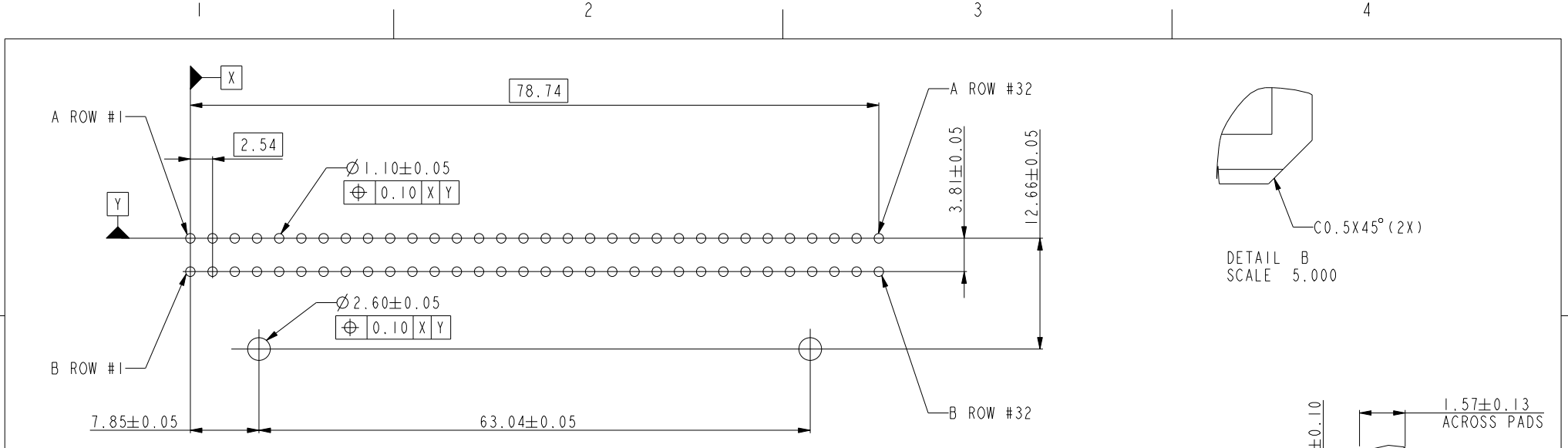


Material	Spec ref *			projection	MM
Mat code		tolerance	✓	⊕	←
Heatreat					
Plating/Finish					
Dr Junon Huang 01/26/10	Product family			size A4	Scale 1.000
Eng Junon Huang 01/26/10	Model Name			ECN	
Chr PM Zheng 01/27/10	Model Revision			REL Level	
Appr JOSEPH HSIA 01/28/10	title			dwg no	Rev. A
Pro/E file catalog	POWER EDGE CARD CONNECTOR ASSY WITH STAND-OFF			10053363-700	

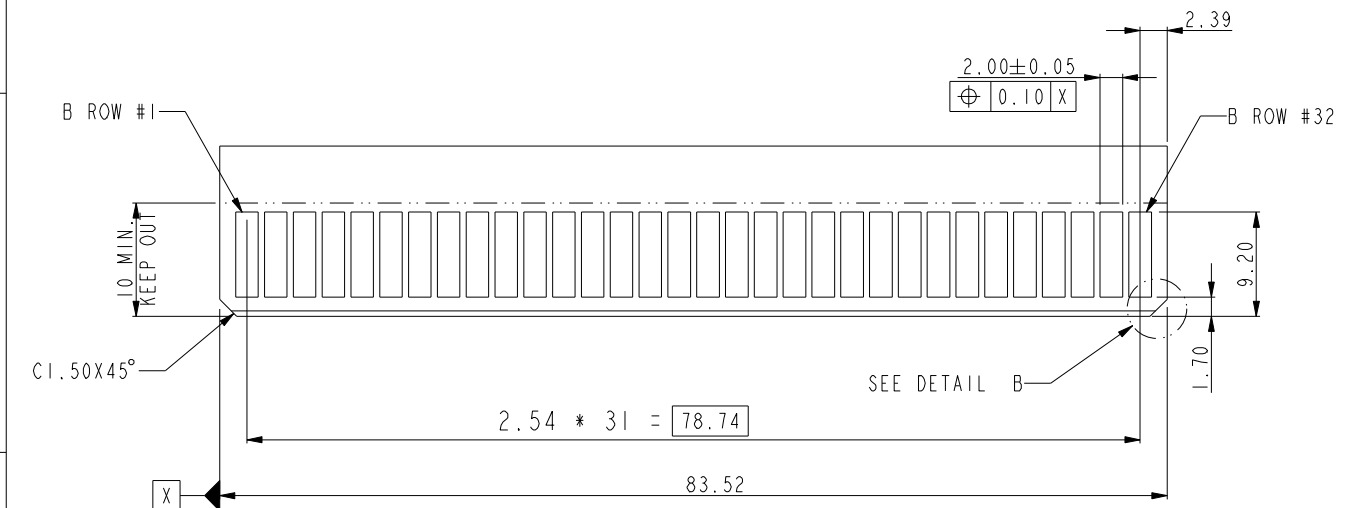
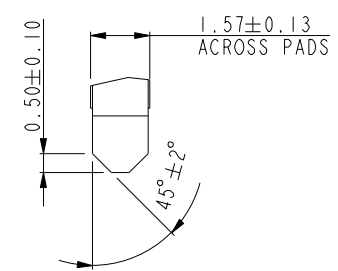
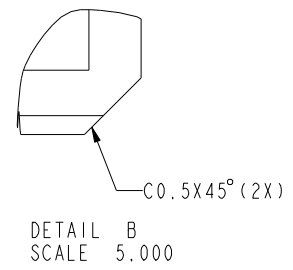
FCI CONFIDENTIAL



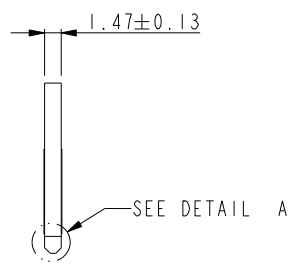
This document is the property of and embodies CONFIDENTIAL and PROPRIETARY information of FCI. No part of the information shown on this document may be used in any way or disclosed to others without the written consent of FCI. Copyright FCI.



RECOMMENDED PCB LAYOUT



RECOMMENDED DAUGHTER CARD LAYOUT (TOP SIDE)



tolerance unless otherwise specified	
linear	.X ± .30
	.XX ± .15
	.XXX ± .08
angles	X° ± 2°

Material		Spec ref *	
Mat code		✓	tolerance
Heatreat			projection
Plating/Finish		MM	
Dr	Junon Huang 01/26/10	size	A4
Eng	Junon Huang 01/26/10	Scale	1.000
Chr	PM Zheng 01/27/10	Product family	
Appr	JOSEPH HSIA 01/28/10	Model Name	
		ECN	
		Model Revision	
		REL Level	
FCI	title		POWER EDGE CARD CONNECTOR ASSY WITH STAND-OFF
	dwg no		10053363-700
Pro/E file	catalog	PDM: Rev:A	STATUS: Released
		CUSTOMER	sheet 3 of 3
		Rev. A	Printed: Dec 03, 2010