

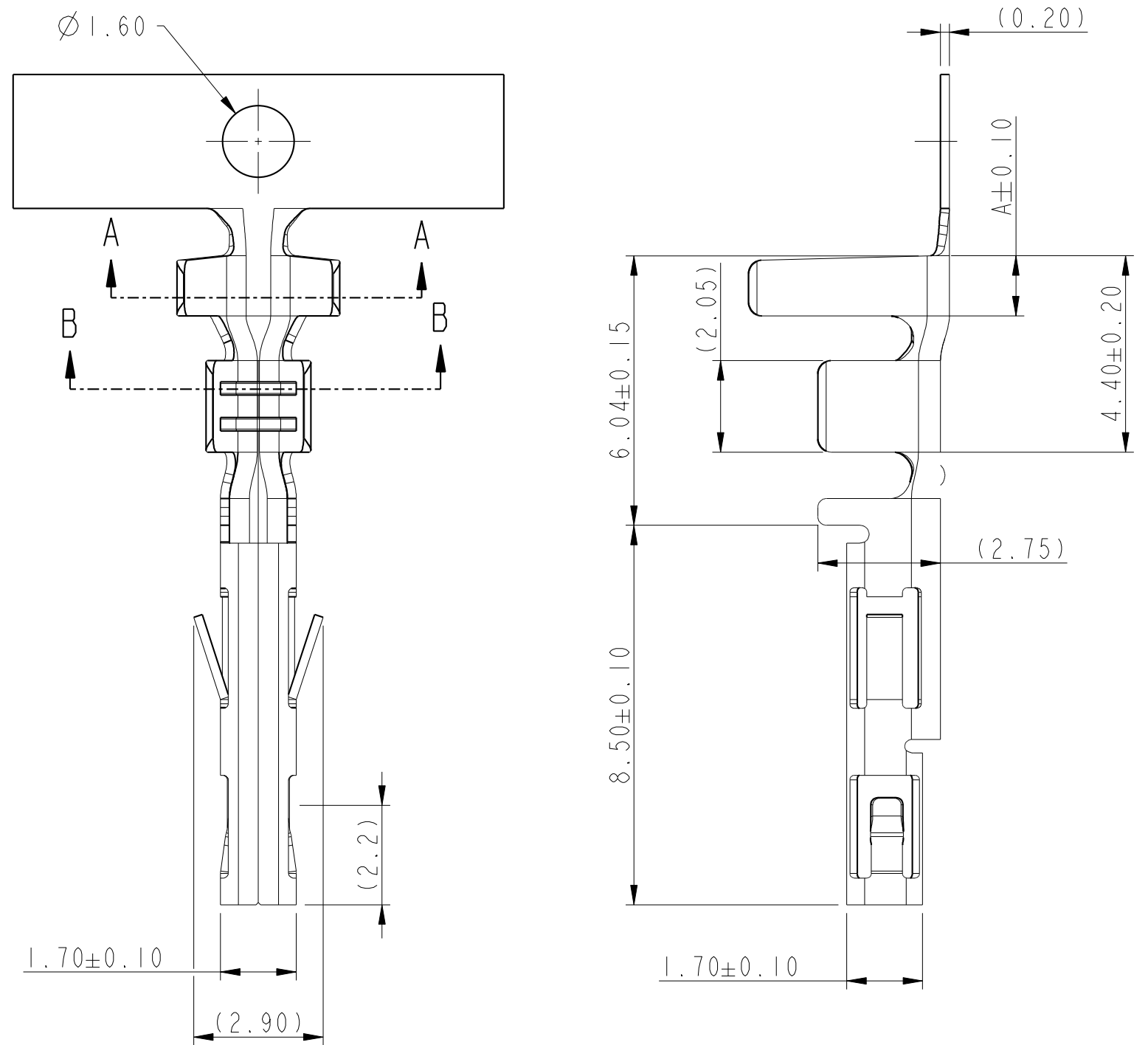
PRODUCT NUMBER

10134170-YXXXLF

RoHS COMPATIBLE,  
LEAD FREE  
LUBRICANT  
APPLICABLE AWG  
MATERIAL  
PLATING

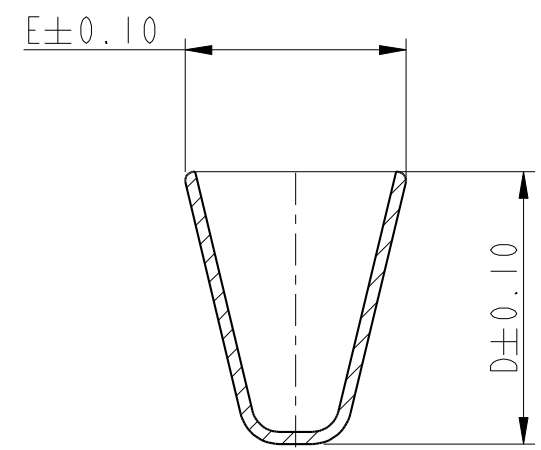
NOTES

- 1- PLATING :
- 1- GOLD FLASH 0.1 μm MIN ON CONTACT AREA  
2μm MIN MATTE TIN ON CRIMPING AREA  
1.27μm MIN Ni UNDERLAYER
  - 2- FULL TIN : 2μm MIN MATTE TIN OVERALL
  - 3- GOLD 0.38μm MIN ON CONTACT AREA  
2μm MIN MATTE TIN ON CRIMPING AREA  
1.27μm MIN Ni UNDERLAYER
  - 4- GOLD 0.76μm MIN ON CONTACT AREA  
2μm MIN MATTE TIN ON CRIMPING AREA  
1.27μm MIN Ni UNDERLAYER
- 2- MATERIAL
- 2- CHRYSOCAL
  - 3- CUPRONICKEL (High current version)
- 3- APPLICABLE AWG
- 1- AWG #16 : INSULATOR DIAMETER 3.1MM MAX
  - 2- AWG #18-24 : INSULATOR DIAMETER 3.1MM MAX
  - 3- AWG #22-28 : INSULATOR DIAMETER 1.8MM MAX
- 4- LUBRICANT :
- 0- NONE
- 5-PRODUCT SPECIFICATION : GS-12-1377



spec ref -		dr	M Glass-adm	2017/07/11	projection	mm	size	A3	scale	8:1
tolerance std		eng	J Dalibard	2018/02/13			ecn no		rel level	
ISO 406 ISO 1101		TOLERANCES UNLESS OTHERWISE SPECIFIED		-			Released			
surface		chr	Cyril Jeune	2018/02/13	product family		Minittek		dwg no	
ISO 1302		appr	Aymeric Soudy	2018/02/13	MINITEK POWER 4.2		10134170		rev	
linear		Amphenol FCI		cat. no.		Product - Customer Drw		sheet 1 of 2		A
angular										
0.X ±0.4										
0.XX ±0.30										
0.XXX ±										
0° ±2°										

PART NUMBER	DIM A	DIM B	DIM C	DIM D	DIM E	APPLICABLE WIRES
10134170-YX3XLF	1.35	1.70	1.85	2.40	2.40	AWG #22-28
10134170-YX2XLF	1.35	2.35	1.9	4.5	3.65	AWG #18-24
10134170-YX1XLF	1.35	2.75	2.35	4.5	3.65	AWG #16



SECTION B-B  
(AWG #16)

SECTION A-A  
(AWG #16)

Amphenol  
FCi

© 2016 AFCI

spec ref	-	dr	M Glass-adm	2017/07/11	projection	mm	size	A3	scale	8:1	
tolerance std	ISO 406 ISO 1101	eng	J Dalibard	2018/02/13			ecn no	-	rel level		Released
TOLERANCES UNLESS OTHERWISE SPECIFIED		chr	Cyril Jeune	2018/02/13			product family	Minittek			
surface	ISO 1302	appr	Aymeric Soudy	2018/02/13	RECEPTACLE CRIMP TERMINAL		dwg no	10134170	rev	A	
	linear			MINITEK POWER 4.2		Product - Customer Drw		sheet 2 of 2			
	angular			cat. no.							