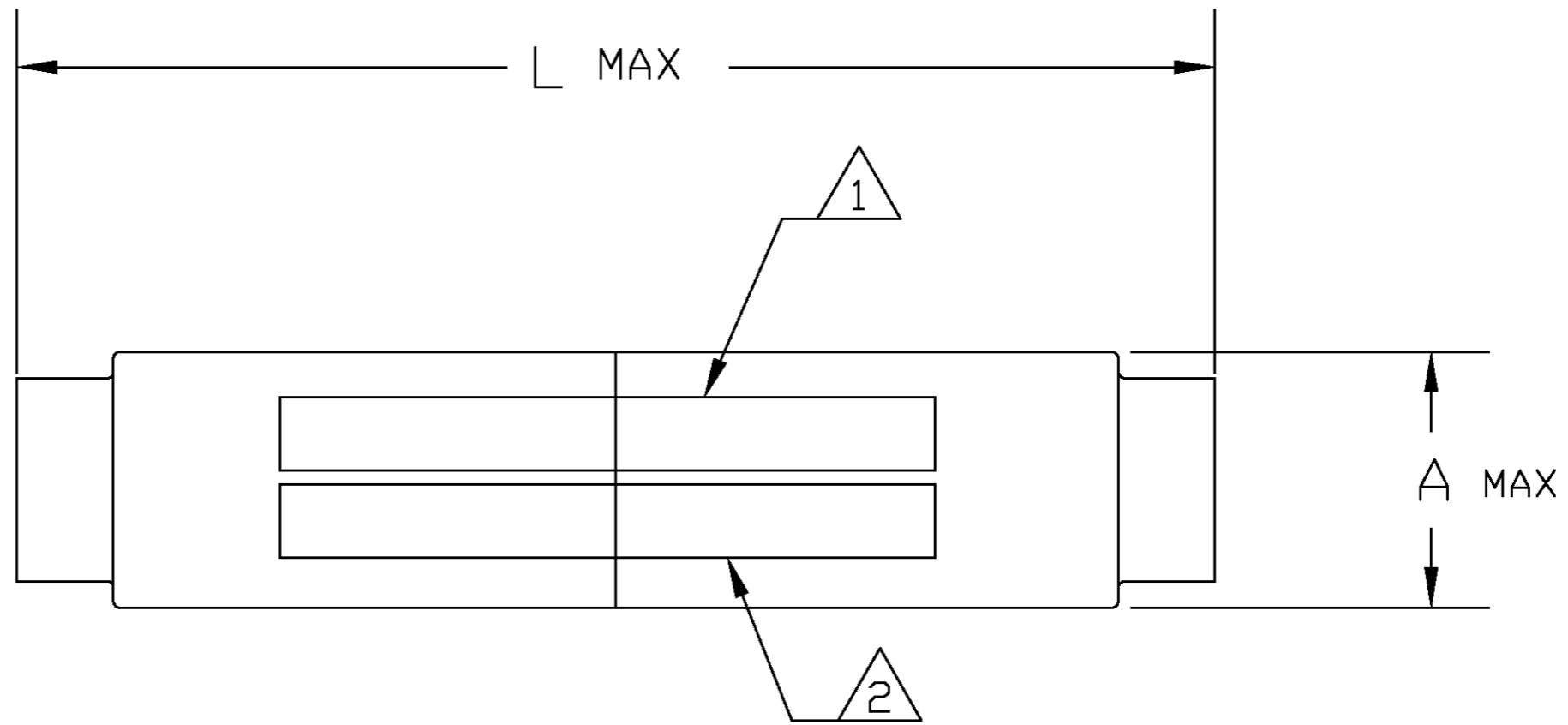
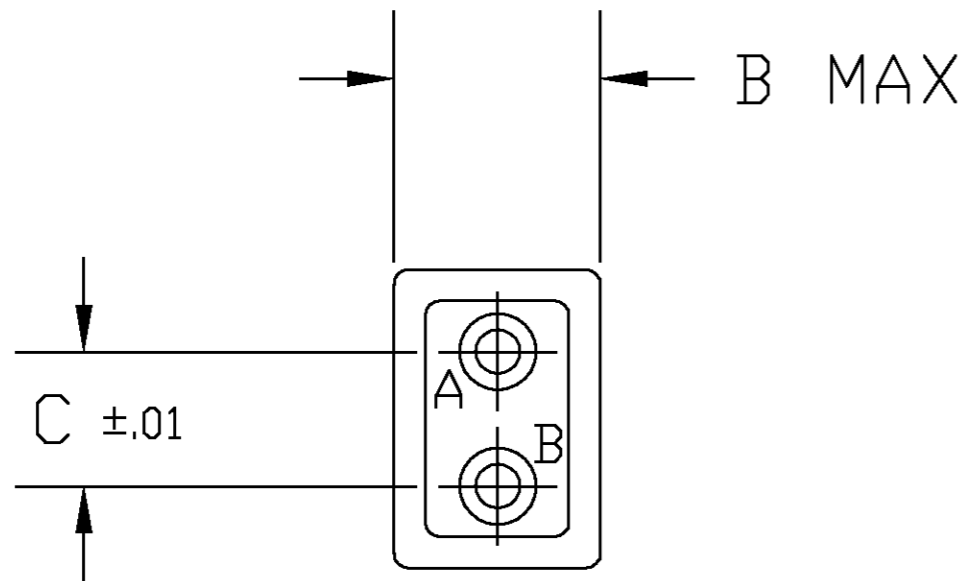


THIS DRAWING IS UNPUBLISHED. RELEASED FOR PUBLICATION .19		
© COPYRIGHT 19 BY AMP INCORPORATED. ALL RIGHTS RESERVED.		
DESCRIPTION	MATERIAL	FINISH
GROMMET	FLUOROSILICONE	MIL-T-81714,CLASS D, BLUE
SPLICE ASSEMBLY HOUSING	EPIALL TYPE 1908	MIL-T-81714,CLASS D, BLACK
TUBE SHRINK	PER MIL-1-23053/8	COLOR TRANSPARENT
CONTACT FEMALE SOCKET	BERYLLIUM COPPER PER ASTM-B194	GOLD PLATE PER MIL-G-45204
RETENTION CLIP	BERYLLIUM COPPER PER ASTM-B194 OR SST PER QQ-S-766	NONE
CONTACTS PIN	COPPER ALLOY PER MIL-C-39029/1	GOLD PLATE PER MIL-G-45204

LOC	DIST	REVISIONS					
DF	A0	P	LTR	DESCRIPTION	DATE	DWN	APVD
		B		REV PER 0600-5711-96	2-98	TT	DM



	1.552	.13	.275	.400	△	CLASS D		22	592588-6
	1.552	.13	.275	.400	△	CLASS D		20	592588-5
	1.922	.18	.300	.500	△	CLASS D		16	592588-4
SUPSD BY -4	1.922	.18	.300	.500	△	CLASS D	M81714/12-16D-1	16	592588-3
SUPSD BY -5	1.552	.13	.275	.400	△	CLASS D	M81714/12-20D-1	20	592588-2
SUPSD BY -6	1.552	.13	.275	.400	△	CLASS D	M81714/12-22D-1	22	592588-1

- △ MARK WIRE SPLICE MARKED WITH "AMP", AMP PART NO., AND DATE CODE AT APPROXIMATE AREA SHOWN.
- △ MARK CUSTOMER/MILITARY PART NUMBER MARKED AT APPROXIMATE AREA SHOWN.
- △ A QUANTITY OF 4 M39029/1-100 PIN CONTACTS ARE SUPPLIED WITH WIRE SPLICE.
- △ A QUANTITY OF 4 M39029/1-101 PIN CONTACTS ARE SUPPLIED WITH WIRE SPLICE.
- △ A QUANTITY OF 4 M39029/1-102 PIN CONTACTS ARE SUPPLIED WITH WIRE SPLICE.

L	C	B	A	REMARKS	MIL-T-81714 CLASS	MILITARY/CUSTOMER PART # △	SIZE
THIS DRAWING IS A CONTROLLED DOCUMENT					18FEB98	AMP Incorporated Harrisburg, PA 17105-3608A	
DIMENSIONS INCHES		TOLERANCES UNLESS OTHERWISE SPECIFIED		APVD D. MILLER 2-20-98	WIRE SPLICE ASSY, T.J, MILITARY, CLASS D		
		0 PLC ±- 1 PLC ±- 2 PLC ±- 3 PLC ±.005 4 PLC ±- ANGLES ±- FINISH -		PRODUCT SPEC -	SCALE 1:1 SHEET 1 OF 1 REV B		
MATERIAL -		FINISH -		APPLIATION SPEC -	WEIGHT -	SIZE A2	CAGE CODE 00779
CUSTOMER DRAWING					DRAWING NO C-592588	RESTRICTED TO -	