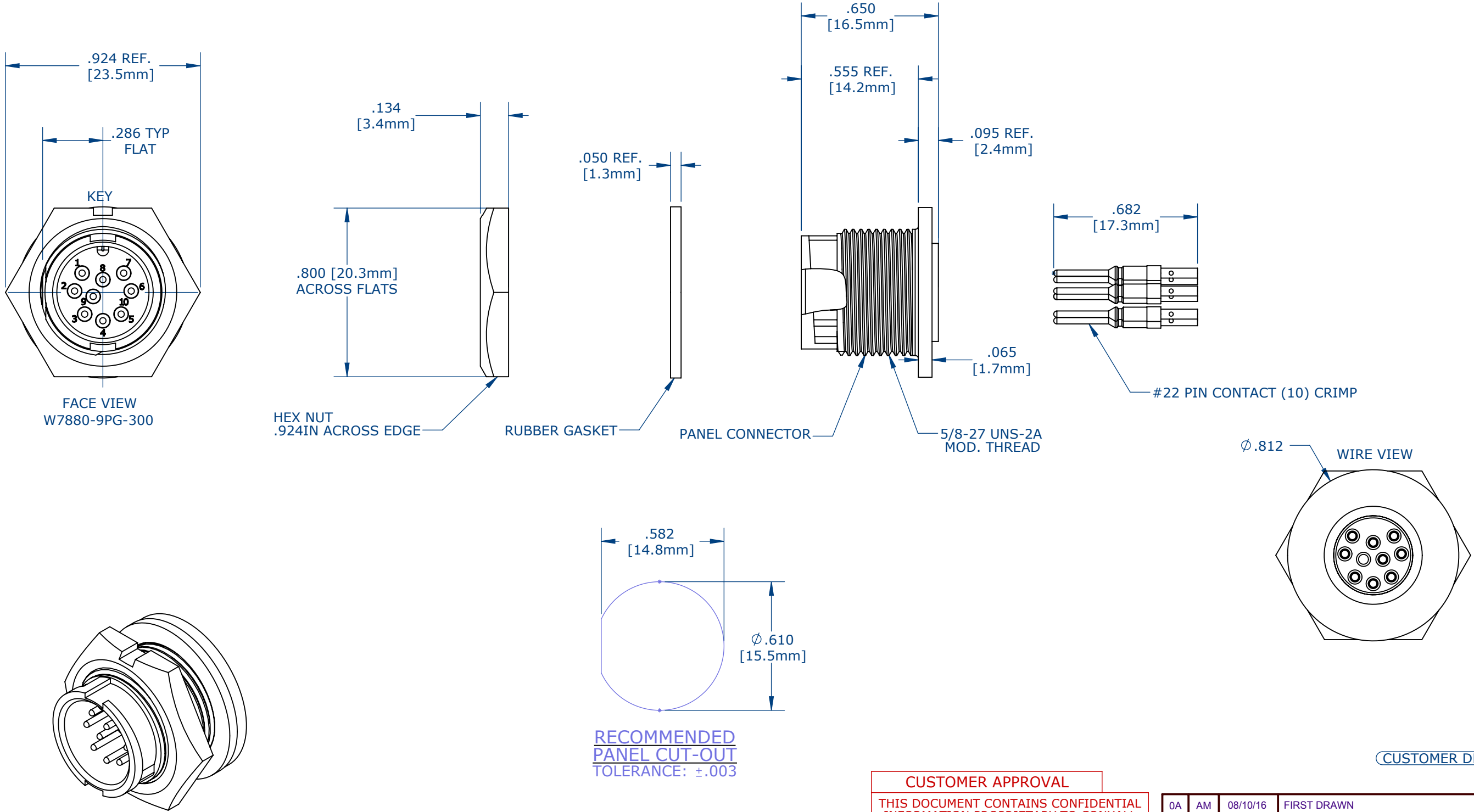


- NOTES:
- 1. PARTS ARE TO BE BULK PACKED.
 - 2. ALL DIMENSIONS ARE REFERENCE ONLY.



CUSTOMER DRAWING

CUSTOMER APPROVAL	
THIS DOCUMENT CONTAINS CONFIDENTIAL INFORMATION PROPRIETARY TO CONXALL CORPORATION. ANY REPRODUCTION, DISCLOSURE, OR USE OF THIS DOCUMENT /INFORMATION IS EXPRESSLY PROHIBITED UNLESS AUTHORIZED IN WRITING BY CONXALL CORPORATION.	
APPROVED BY:	_____
DATE:	_____

0A	AM	08/10/16	FIRST DRAWN
REV.	INIT.	DATE	DESCRIPTION
AM	AM	08/10/16	ORIG. DRAWN BY: DATE: 08/10/16
CHECKED BY:			601 E. WILDWOOD VILLA PARK, IL 60181
APPROVED BY:			
TITLE: PANEL CONNECTOR ASSEMBLY (9) #22 PIN CONTACT, CRIMP MINI-CON-X			CUSTOMER: STANDARD PRODUCT
PART NUMBER: W7880-9PG-300			
REV 0A			