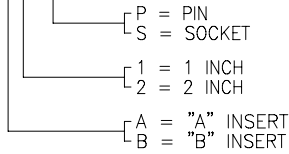


NOTES:

1. PART NUMBER VARIABLE:

MTC100-JXX-X11



2. MATERIAL:

- A) PIN/SOCKET INSERT HIGH GRADE POLYARYLENE THERMOPLASTIC.
- B) PIN CONTACT COPPER ALLOY PER QQ-B-613 OR QQ-C-502.
- C) SOCKET CONTACT COPPER ALLOY PER QQ-B-750.
- D) INTERFACIAL SEAL SILICONE ELASTOMER PER ZZ-R-765.

3. FINISH:

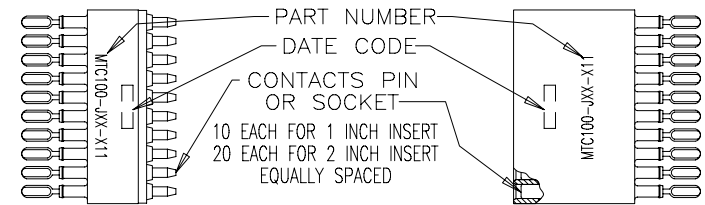
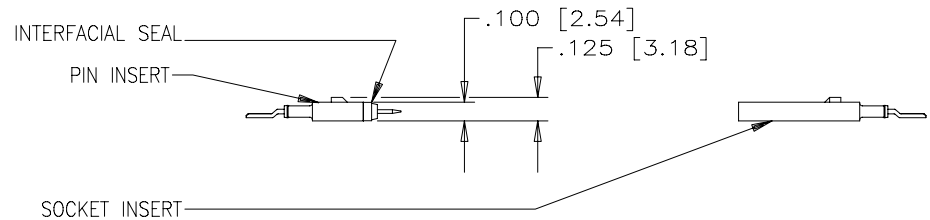
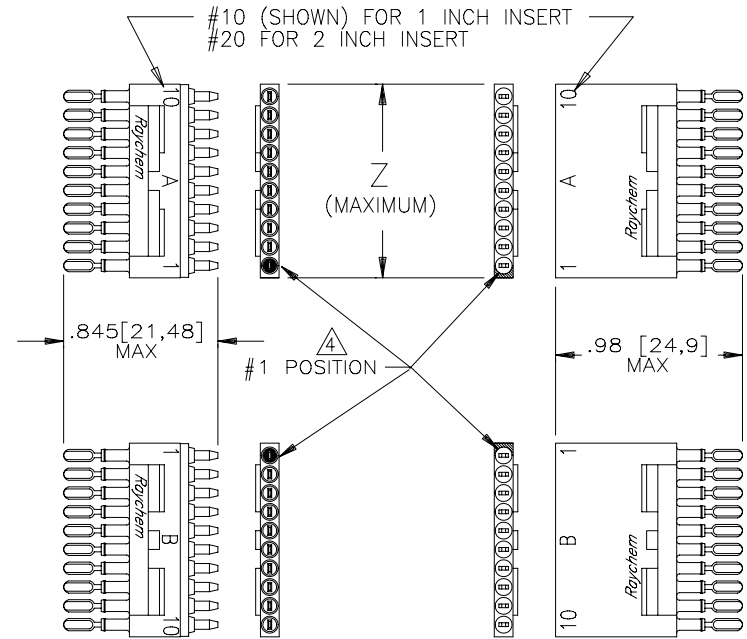
- A) PIN/SOCKET INSERT AS MOLDED.
- B) PIN/SOCKET CONTACT GOLD PLATE PER MIL-G-45204, CLASS 1.
- C) CONTACT TAIL SOLDER COATED PER QQ-S-571 (Sn63),

If this document is printed it becomes uncontrolled.
Check for the latest revision.

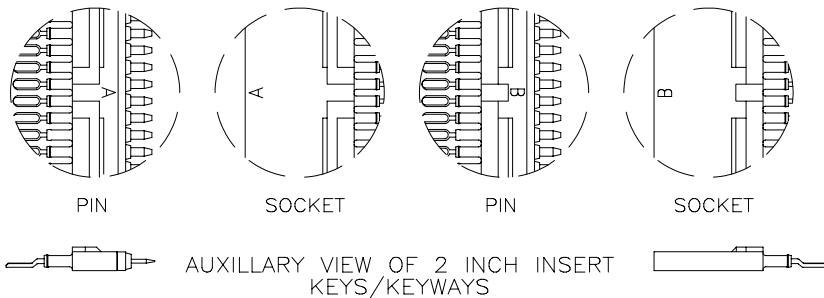
4. NUMBER ONE POSITION IS MARKED AS SHOWN IN CONTRASTING COLOR ON INTERFACE.

5. THIS INSERT MEETS THE REQUIREMENTS OF RAYCHEM SPECIFICATION C-6111.

REVISIONS			
LTR	DESCRIPTION	DATE	APPROVED
N/C	INITIAL RELEASE PER ECN T-		



SIZE		WEIGHT MAXIMUM		DIM. "Z"
		LBS.	GRAMS	
1 INCH INSERT	PIN	.0038	1.724	1.05 [26,7]
	SOC.	.0044	1.996	
2 INCH INSERT	PIN	.0074	3.356	2.05 [52,1]
	SOC.	.0089	4.037	



SPECIFICATION CONTROL DRAWING © Raychem Corporation 1990

UNLESS OTHERWISE SPECIFIED DIMENSIONS ARE IN INCHES. METRIC DIMENSIONS ARE IN BRACKETS.	DRAWN	CERDAN	900110	Raychem			RAYCHEM CORPORATION 300 CONSTITUTION DRIVE MENLO PARK, CALIFORNIA 94025	
	CHECKED			TITLE			INSERT	
	APPROVED	J.BLAIR	88APR18	20-26 AWG ROUND WIRE			125°C OPERATING TEMPERATURE	
	APPROVED	J.CAMERON	88APR21	MTC100 SERIES				
DECIMALS	.XXX ± .005	.13 mm		SIZE	CODE IDENT. NO.	DWG. NO.	REV	
.XX ±	mm		CAD NAME	C	06090	MTC100-JXX-X11	N/C	
ANGLES	.X ±	THIRD ANGLE PROJECTION	005250-1	DO NOT SCALE THIS DRAWING				
WEIGHT: MAXIMUM SEE TABULATION				SHEET 1 OF 1				