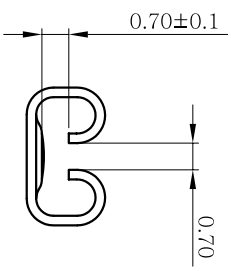
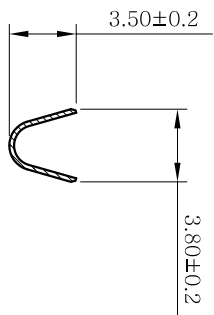
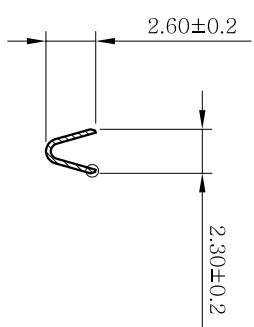
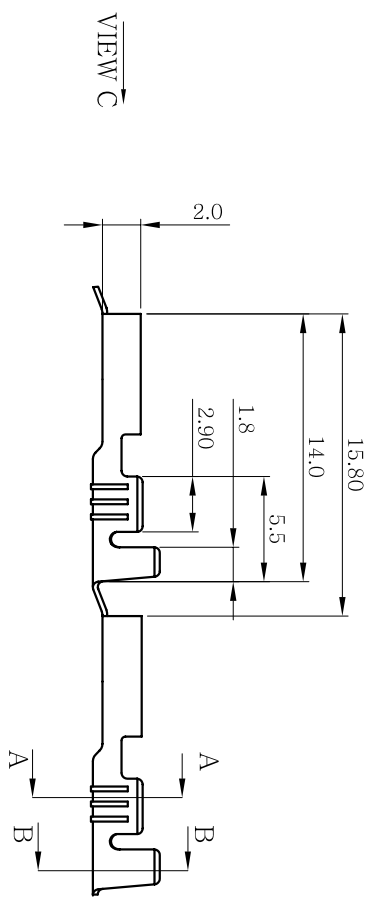
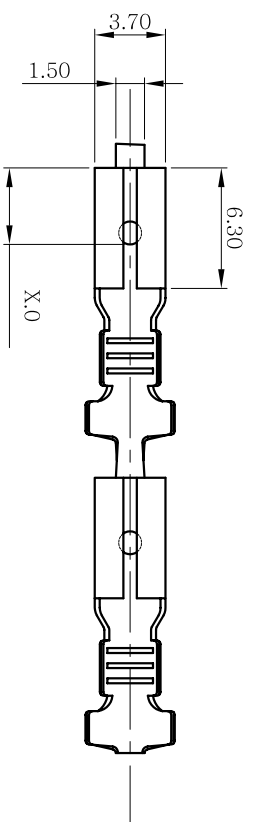


DIST	LOC	PL	LTNR	REVISION/RECORD	DATE	DWG	APPD
	ec	0		FH10-0004-02 NEW REL	Nov.8.02	AM	SFS
		A		FH10-0012-03	27/10/03	BW	SFS
		B		FH10-0028-03	19/11/03	BW	SFS

NOTES:

1. MATERIAL: COPPER ALLOY.
STRIP THICKNESS: 0.25 mm.
2. CONTINUOUS STRIP ON REELS.
3. APPLICATION DATA:
WIRE: 0.2~0.5 mm²
INSULATION: Ø 2.4 mm MAX.



VIEW C
2:1

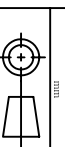
SECTION A-A

SECTION B-B

TOLERANCES UNLESS OTHER SPECIFIED:

- 0 P.L.C ± 0.20
- 1 P.L.C ± 0.15
- 2 P.L.C ± 0.15
- 3 P.L.C ± 0.15
- 4 P.L.C ± 0.15
- 5 ANGLE

DIMENSIONS IN



DR	ALIAN MO	DATE	OCT.25.02	MATERIAL	SPE NOTE
CHK	BORIS WONG	DATE	NOV.04.02		
APP'D	S.F. SHUM	DATE	NOV.06.02		
PRODUCT SPEC	108-58501				

FINISH	"X"	P/N
BARE	5.3±0.2	1494209-2
BARE	4.0 ^{+0.2}	1494209-1

TYCO
Tyco Electronics
Hong Kong Limited
Room 1301, Ocean Centre No. 5 Canton Rd, Tsimshatsui, Kowloon
Hong Kong

RESTRICTED TO	SCALE	SIZE	DWG NO.	NAME
1:1	A3	C-1494209	1494209	SIZE (2.8) FASTON RECTPT.

APPLIC. SPEC	114-58500	SHEET	REV
		1 OF 1	B