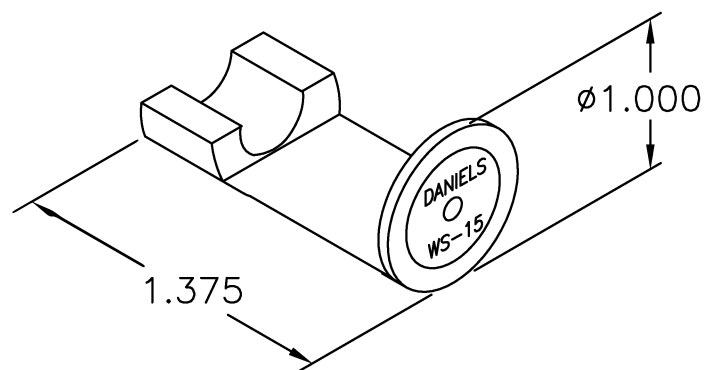



**UNCONTROLLED DOCUMENT
WILL NOT BE UPDATED**

REVISIONS				
REV. SYM.	E.C.O. NUMBER	DESCRIPTION	BY DATE	APP'D DATE
1		ORIGINAL RELEASE	JWJ 12/11/03	RRR 12/11/03



1. KINGS EQUIVALENT KTD-81.

NOTES:

RESTRICTED & CONFIDENTIAL CONFIDENTIAL PROPERTY OF DANIELS MANUFACTURING CORP. NOT TO BE DISCLOSED TO OTHERS, REPRODUCED OR USED FOR ANY OTHER PURPOSE, EXCEPT AS AUTHORIZED IN WRITING BY DANIELS MANUFACTURING. MUST BE RETURNED TO DANIELS MANUFACTURING CORP. ON COMPLETION OF ORDER OR OTHER PURPOSE FOR WHICH LENT.	ITEM	PART NO.	QTY.	DESCRIPTION/REMARKS	
	DRN.	J. JOYCE	DATE	12/11/03	
	CHK'D.	RRR	DATE	12/11/03	
	APP'D.		DATE		
	APP'D.		DATE		
DO NOT SCALE DRAWING	NOTE:		 DANIELS MANUFACTURING CORP. ORLANDO, FLORIDA CAGE 11851		
	THIS DRAWING IS AN OUTLINE DRAWING OF THE RESPECTIVE DMC PART NUMBER INDICATED. ACTUAL DMC PART NUMBER IS DRAWING NUMBER WITHOUT THE "-ENV" SUFFIX.				
	WHERE USED:		TITLE DIELECTRIC TRIM JIG ENVELOPE DRAWING		
	SIZE	SCALE	CAD P/N	SHEET OF	
A	NTS	WS-15-ENV	1 1		
POSTING		DWG. NO.	REV.		
		WS-15-ENV	1		