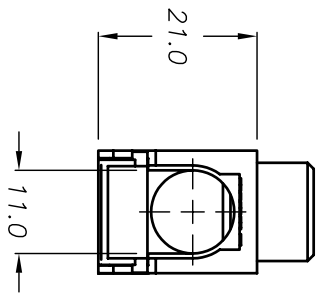
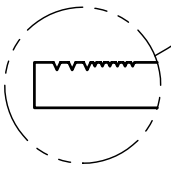
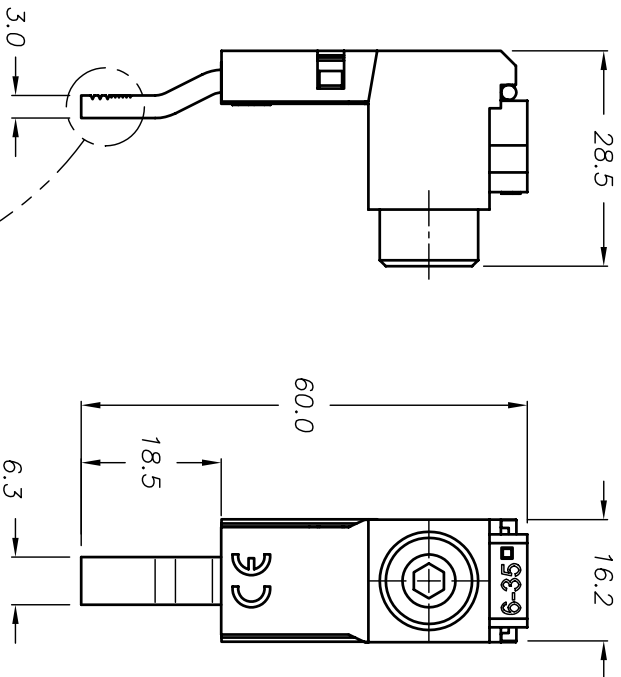
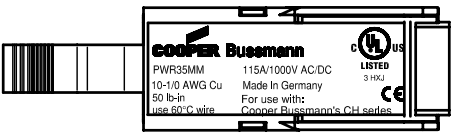
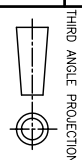


PART NO.		PLANT DISTRIBUTION CODE:	
PWR35MM			
REV #	REVISIONS	DATE	APPR.
--	INITIAL RELEASE ECN BU-SB11316	3-30 2011	
A	REVISED TITLE ECN BU-SB11501	5-3 2011	



CUSTOMER PRINT

TOLERANCES UNLESS OTHERWISE SPECIFIED		
METRIC	ENGLISH	FRACTIONAL TOL
1 PL DEC.=+0.25	2 PL DEC.=+0.01	ANGULAR TOL = +1°
2 PL DEC.=+0.13	3 PL DEC.=+0.005	ANGULAR TOL 1PL=+0.5°



DESIGN UNITS
METRIC (mm)
CREATED USING
AUTOCAD

COPYRIGHT — Cooper Industries, Inc.
This is an unpublished work. The disclosure of this work is limited to a select personnel. Further dissemination or disclosure to the public is PROHIBITED. This unpublished work is protected by Federal Copyright Law and all rights thereunder are reserved by Cooper Industries, Inc.

CONFIDENTIAL —

The information contained in this document is the property of Cooper Industries, Inc. It is not for public disclosure. Possession of the information does not convey any right to loan, sell or disclose the information. Unauthorized reproduction or use of the information is PROHIBITED. This document is to be returned to Cooper Industries, Inc. upon completion of the purpose for which it is loaned or upon request.

MATERIAL

FINISH	USED ON	DRAWN BY	DATE	C/F NO.	SCALE
		JG	3-30-11	83525	1:1

COOPER Bussmann
St. Louis, MO 63178

THREE PHASE FEEDER TERMINAL

PART NO.	SIZE:
PWR35MM	A