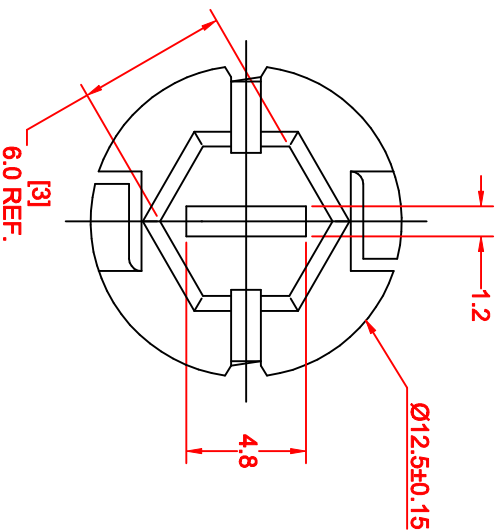
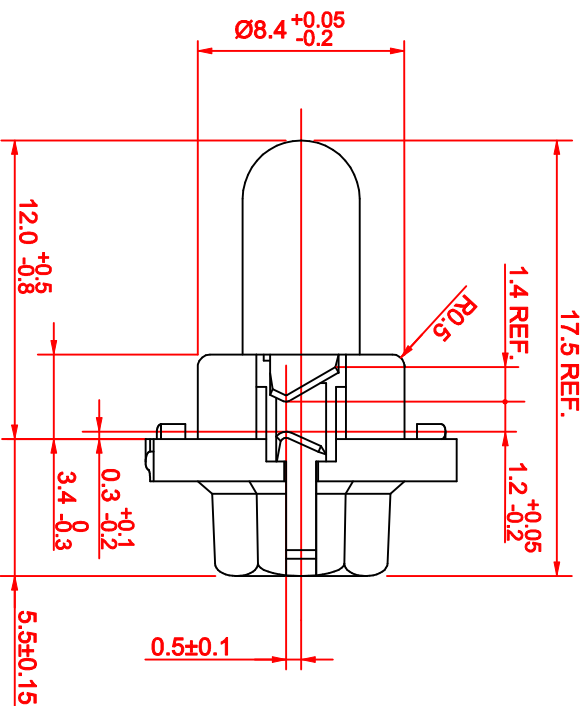
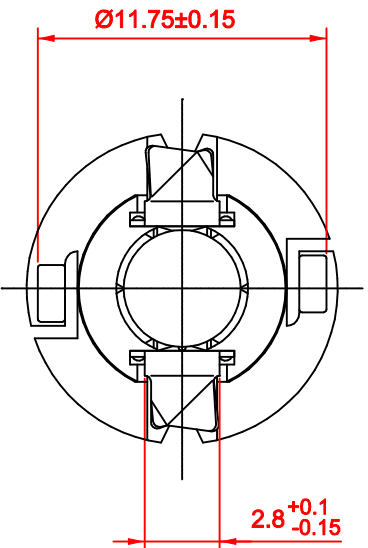
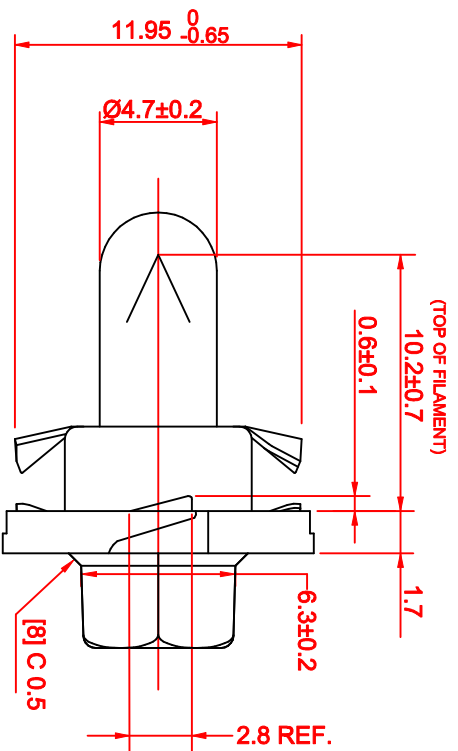
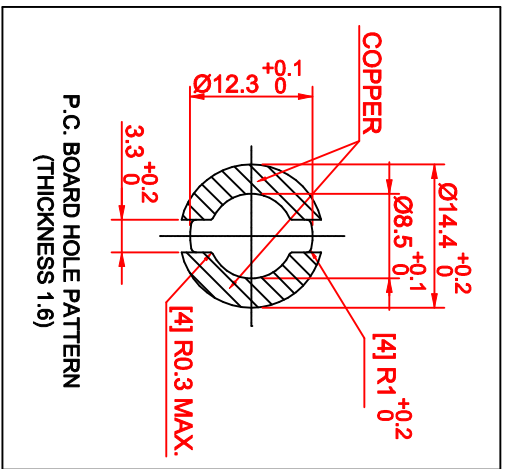


REV.	DESCRIPTION/ECO NO.	DATE
A	RELEASE & CANCEL P-0212-08 MECHANICAL CHANGE	2/11/03 2/20/03



JKL PART NO.: WWT2-EW34/BLA

LAMP NUMBER: EW34					
VOLTS RATED	AMPS $\pm 10\%$	WATTS	*MSCP $\pm 25\%$	*LUMENS $\pm 25\%$	AVERAGE LIFE HRS.
14.0	.127	1.78	.700	8.79	7,000 DC
FILAMENT TYPE: C-2V					

*LAMP RATING ONLY WITHOUT BASE

BASE COLOR: BLACK

METRIC		DIMENSIONS ARE IN MILLIMETERS		TOLERANCE UNLESS OTHERWISE SPECIFIED	
THIRD ANGLE PROJECTION	ANGLE ± 0	1 PL ± 0.3	2 PL ± 0	DATE	DATE
DRAWN BY L. WENGSTROM	APP'D BY J. KAHL	2/20/03			
- CAD DRAWING - MANUAL REVISIONS NOT PERMITTED					
TITLE		SCALE	SIZE	FIG. NO.	DRAWING NO.
WIRE TERMINAL LAMP IN BASE		NONE	A	55335	WWT2-EW34/BLA
RELEASED DATE	REVISION DATE	SHEET	OF	REV.	
2/11/03	2/20/03	1	1	A	

JKL COMPONENTS CORPORATION