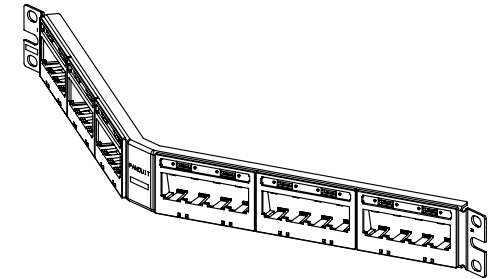
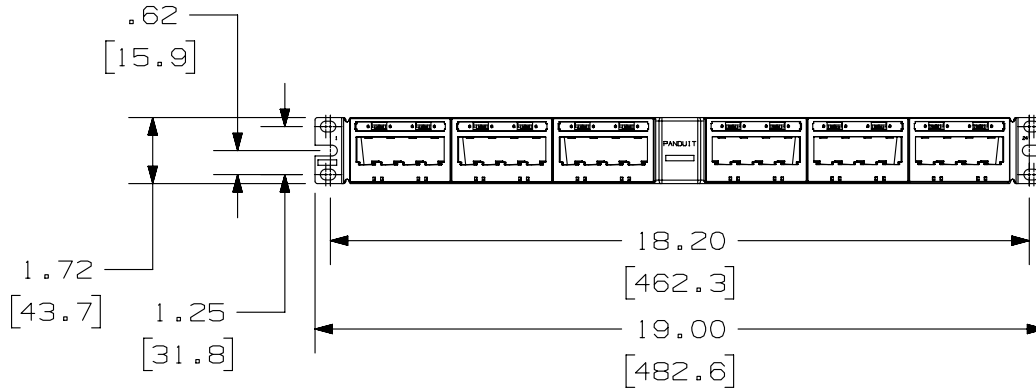
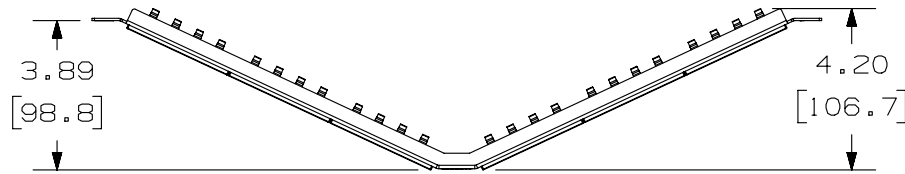


THIS COPY IS PROVIDED ON A RESTRICTED BASIS AND IS NOT TO BE USED IN ANY WAY DETRIMENTAL TO THE INTERESTS OF PANDUIT CORP.

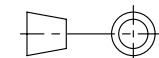
PANDUIT P/N	WEIGHT
UICMPPA24BLY	.57 LB/EACH PC (257.0 g/EACH PC)

NOTES:

- SEE CURRENT CATALOG FOR ADDITIONAL PART NUMBER SUFFIXES TO INDICATE COLOR AND OR PACKAGE QUANTITY.
- SEE CATALOG FOR COMPLETE LIST OF PARTS APPLICABLE FOR USE WITH THIS PART.
- DIMENSIONS IN PARENTHESES ARE IN METRIC.
- PART INCLUDES:
  - 1- METAL STAMPING
  - 6- 4 POSITION FACEPLATE WITH 1 LABEL POCKET (ASSEMBLED TO METAL STAMPING)
  - 6- CLEAR LABEL COVER
  - 1- SCREW KIT (INCLUDES FOUR #12-24 SCREWS)
  - 1- SCREW KIT (INCLUDES FOUR M6 SCREWS)
- LABELS SOLD SEPARATELY.



PART NUMBER		UICMPPA24BLY	
TITLE			
MINI-COM ULTIMATE ID ANGLED 24 PORT MODULAR PATCH PANEL WITH 1 LABEL POCKET PER FACEPLATE			
CUSTOMER DRAWING			
ITEM REVISION NAME		M02479AR/03	
DATASET FILE NAME		M02479AR_DC18/03A	
UNLESS OTHERWISE SPECIFIED, DIMENSIONAL TOLERANCES ARE: IN [ mm ]		MATERIAL:	
.x ± .xx ± .03 [ .8 ]		PANEL: C.R.S. FACEPLATE: ABS	
.xxx ± .010 [ .3 ]		DRAWING NUMBER:	
ANGLES ±		02479-018	
THIRD ANGLE PROJECTION		SHT 1 OF 1	
DRAWN BY	DATE	CHK	SCALE
JSP	4-19-06	MJD	NONE
REV	DATE	BY	CHK
1	5-8-14	BJN	JSP
BY	CHK	APR	DESCRIPTION
BJN	JSP	MMR	REVISED & REDRAWN PREVIOUS REVISIONS REMVD FOR CLARITY
DATE	DESCRIPTION	ECN	
5-8-14	REVISED & REDRAWN PREVIOUS REVISIONS REMVD FOR CLARITY	02479-018	



D10100DA/14

2

1

2

1