

IEC Appliance Inlet C8 polarized, Snap-in Mounting, Front Side, Solder, Quick Connect or PCB Terminal



Snap-in mounting from front side
Solder terminal for PCB
Terminal vertical

C8 polarized



70 °C

See below:

[Approvals and Compliances](#)

Description

- Panel mount
- Snap-in mounting on PCB from front side
- Appliance Inlet , Pin temperature 70 °C , Protection class II
- Solder, Quick Connect or PCB Terminal

Weblinks

[pdf data sheet](#), [html datasheet](#), [General Product Information](#), [Approvals](#), [Distributor-Stock-Check](#), [Accessories](#), [Detailed request for product](#)

Technical Data

| | | | |
|-----------------------------------|--|-------------------------|---|
| Ratings IEC | 2.5 A / 250 VAC; 50 Hz | Appliance inlet/-outlet | C8p acc. to IEC 60320-1 |
| Ratings UL/CSA | 2.5 A / 250 VAC; 60 Hz | | UL 60320-1, CSA C22.2 no. 60320-1 |
| | 7 A / 125 VAC; 60 Hz | | (for cold conditions) pin-temperature 70 °C, 2.5 A, Protection Class II |
| Dielectric Strength | > 1.5 kVAC between L-N > 3 kVAC between L/N-PE (1 min/50 Hz) | | |
| Allowable Operation Temperature | -25 °C to 70 °C | | |
| IP-Protection | from front side IP20 acc. to IEC 60529 | | |
| Protection against electric shock | Suitable for appliances with protection class II acc. to IEC 61140 | | |
| Material: Housing | PA6, black / grey / white, UL 94V-0 | | |

Approvals and Compliances

Detailed information on product approvals, code requirements, usage instructions and detailed test conditions can be looked up in [Details about Approvals](#)

SCHURTER products are designed for use in industrial environments. They have approvals from independent testing bodies according to national and international standards. Products with specific characteristics and requirements such as required in the automotive sector according to IATF 16949, medical technology according to ISO 13485 or in the aerospace industry can be offered exclusively with customer-specific, individual agreements by SCHURTER.

Approvals

The approval mark is used by the testing authorities to certify compliance with the safety requirements placed on electronic products.

Approval Reference Type: 2579

| Approval Logo | Certificates | Certification Body | Description |
|---------------|-------------------------------|--------------------|----------------------------------|
| | VDE Approvals | VDE | VDE Certificate Number: 40034368 |
| | UL Approvals | UL | UL File Number: E96454 |


Product standards

Product standards that are referenced

| Organization | Design | Standard | Description |
|--------------|-----------------------|-----------------------|---|
| | Designed according to | IEC 60320-1 | Appliance couplers for household and similar general purposes |
| | Designed according to | UL 60320-1 | Standard for Attachment Plugs and Receptacles |
| | Designed according to | CSA C22.2 no. 60320-1 | General Use Receptacles, Attachment Plugs, and Similar Wiring Devices |





Application standards

Application standards where the product can be used

| Organization | Design | Standard | Description |
|--|--------------------------------|----------------|--|
|  | Designed for applications acc. | IEC/UL 62368-1 | IEC 62368-1 includes the basic requirements for safety of audio, video, information technology and office equipment. |

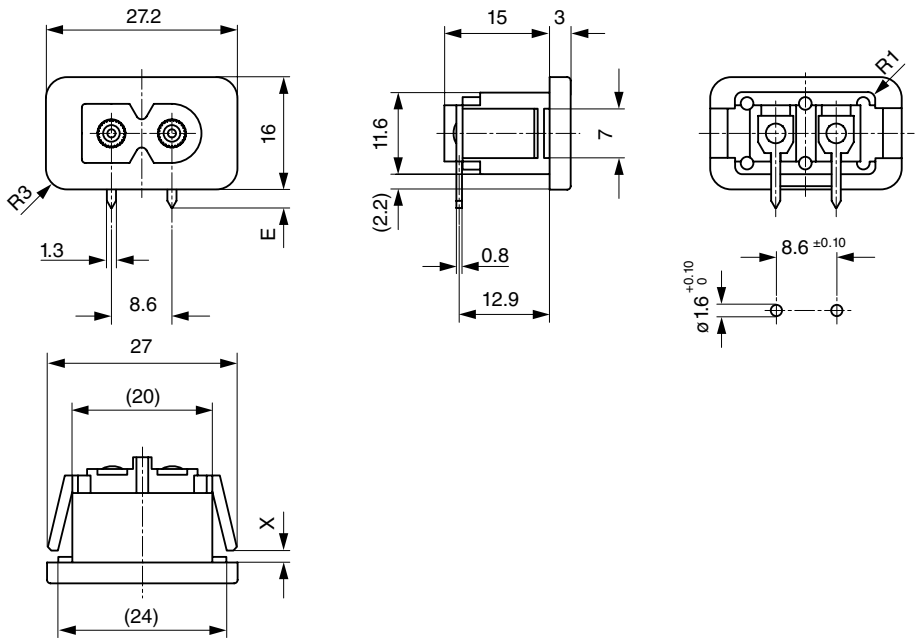
Compliances

The product complies with following Guide Lines

| Identification | Details | Initiator | Description |
|--|--|-------------|---|
|  | CE declaration of conformity | SCHURTER AG | The CE marking declares that the product complies with the applicable requirements laid down in the harmonisation of Community legislation on its affixing in accordance with EU Regulation 765/2008. |
|  | RoHS | SCHURTER AG | Directive RoHS 2011/65/EU, Amendment (EU) 2015/863 |
|  | China RoHS | SCHURTER AG | The law SJ / T 11363-2006 (China RoHS) has been in force since 1 March 2007. It is similar to the EU directive RoHS. |
|  | REACH | SCHURTER AG | On 1 June 2007, Regulation (EC) No 1907/2006 on the Registration, Evaluation, Authorization and Restriction of Chemicals 1 (abbreviated as "REACH") entered into force. |

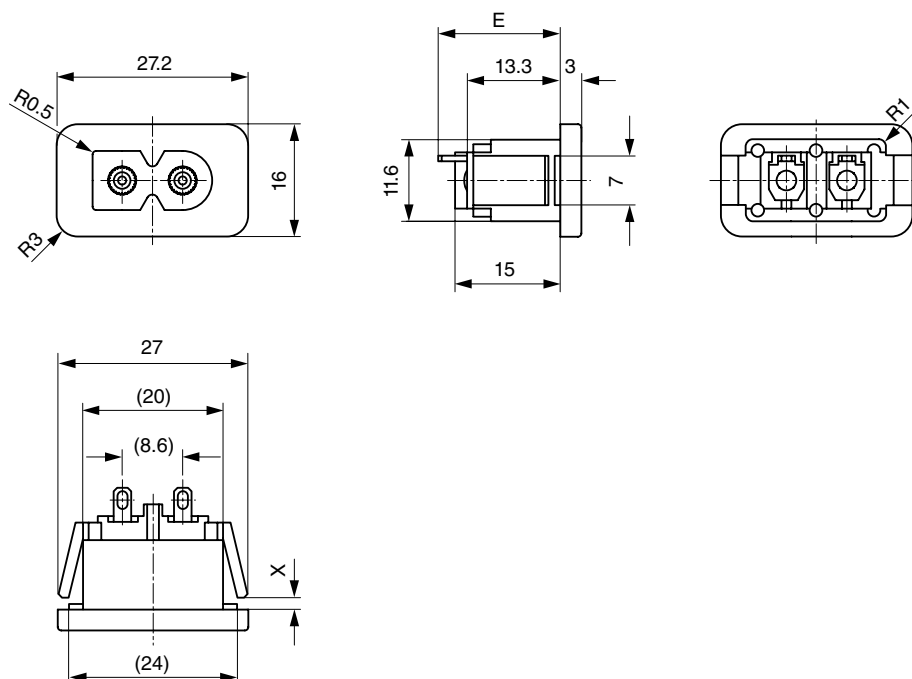
Dimensions [mm]

Solder terminals for PCB



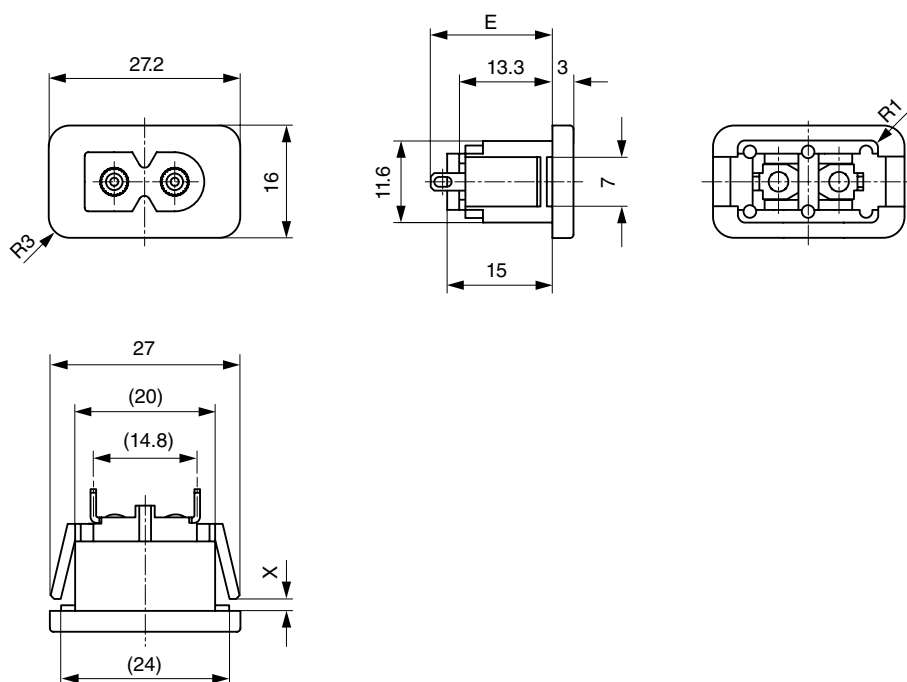
Panel thickness X = 1.0 / 1.5 / 2.0 / 2.5 / 3.0 mm
E: PCB terminal standard: 4.25 mm
E: PCB terminal short: 2.7 mm
E: PCB terminal long: 5.35 mm

Terminals orientation A

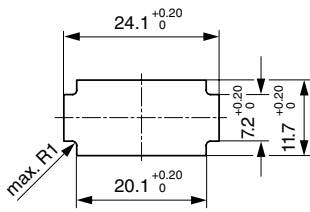


Panel thickness X = 1.0 / 1.5 / 2.0 / 2.5 / 3.0 mm
 E: Solder terminals short: 17.3 mm (L=4.8 mm)
 E: Solder terminals long: 21.0 mm (L=8.5 mm)
 E: Quick connect terminals 2.8x0.8 mm: 23.3 mm

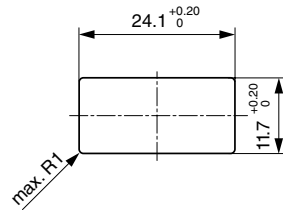
Terminals orientation B



Panel thickness X = 1.0 / 1.5 / 2.0 / 2.5 / 3.0 mm
 E: Solder terminals short: 17.3 mm (L=4.8 mm)
 E: Solder terminals long: 21.0 mm (L=8.5 mm)
 E: Quick connect terminals 2.8x0.8 mm: 23.3 mm



Panel cut-out for X = 1.0 mm



Panel cut-out for X = 1.5 / 2.0 / 2.5 / 3.0 mm

Config. Code**2579 - H - A B C 0 - D - E G F**

The characters are placeholders for the correspondingly keys of selections from the key tables.

2579 - H - A B C 0 - D - E G F = Type

| Type | Configuration key |
|---------------------|-------------------|
| protection class II | X |

2579 - H - A B C 0 - D - E G F = Terminals

| Terminal L | | Configuration key |
|--|--|-------------------|
| short solder terminal (L = 4.8 mm) | | 2 |
| long solder terminal (L = 8.5 mm) | | 3 |
| PCB-terminal standard (additional solder terminal) | | 4 |
| PCB-terminal short (additional solder terminal) | | 5 |
| PCB-terminal long (additional solder terminal) | | 6 |
| Blade terminal (2.8 x 0.8 mm) | | 7 |
| Blade terminal (4.8 x 0.8 mm) | | 8 |
| Blade terminal (6.3 x 0.8 mm) | | 9 |
| PCB-terminal (standard) | | A |
| PCB-terminal (short) | | B |
| PCB-terminal (long) | | C |

2579 - H - A B C 0 - D - E G F = Terminals

| Terminal N | Configuration key |
|--|-------------------|
| short solder terminal (L = 4.8 mm) | 2 |
| long solder terminal (L = 8.5 mm) | 3 |
| PCB-terminal standard (additional solder terminal) | 4 |
| PCB-terminal short (additional solder terminal) | 5 |
| PCB-terminal long (additional solder terminal) | 6 |
| Blade terminal (2.8 x 0.8 mm) | 7 |
| Blade terminal (4.8 x 0.8 mm) | 8 |
| Blade terminal (6.3 x 0.8 mm) | 9 |
| PCB-terminal (standard) | A |
| PCB-terminal (short) | B |
| PCB-terminal (long) | C |

Symbols similar as in table A

2579 - H - A B C 0 - D - E G F = Terminals

| Terminal Ground | Configuration key |
|------------------|-------------------|
| without terminal | 0 |

Symbols similar as in table A

2579 - H - A B C 0 - D - E G F = Color

| Color | Configuration key |
|-------|-------------------|
| Black | A |
| Grey | B |
| White | D |

2579 - H - A B C 0 - D - E G F = Style

| Style | Configuration key |
|-----------------------------|-------------------|
| snap-in (s=panel thickness) | 4 |

2579 - H - A B C 0 - D - E G F = Dimension S

Dimension "S"

Configuration
key

2579 - H - A B C 0 - D - E G F = Orientation of Terminals

10

15

20

25

30

The dimension "S" is displayed in (1/10 mm). This information is also valid for the order code

Orientation of Terminals

Configuration
key

horizontal

A

vertical

B

All Variants

| Terminals L / N | Orientation of Terminals | Color | Panel Thickness s [1/10 mm] | Config. Code | Order Number |
|------------------------------------|--------------------------|-------|-----------------------------|--------------------|--------------|
| short solder terminal (L = 4.8 mm) | vertical | Black | 30 | 2579-X-2200-A-430B | 6160.0140 |
| PCB-terminal (standard) | horizontal | Black | 30 | 2579-X-AA00-A-430A | 6160.0141 |
| short solder terminal (L = 4.8 mm) | horizontal | Black | 30 | 2579-X-2200-A-430A | 6160.0142 |
| short solder terminal (L = 4.8 mm) | horizontal | Black | 25 | 2579-X-2200-A-425A | 6160.0145 |
| short solder terminal (L = 4.8 mm) | vertical | Black | 15 | 2579-X-2200-A-415B | 6160.0150 |
| short solder terminal (L = 4.8 mm) | vertical | Black | 20 | 2579-X-2200-A-420B | 6160.0151 |
| short solder terminal (L = 4.8 mm) | vertical | Black | 25 | 2579-X-2200-A-425B | 6160.0152 |
| short solder terminal (L = 4.8 mm) | horizontal | Black | 15 | 2579-X-2200-A-415A | 6160.0157 |
| short solder terminal (L = 4.8 mm) | horizontal | Black | 20 | 2579-X-2200-A-420A | 6160.0158 |
| PCB-terminal (standard) | horizontal | Black | 15 | 2579-X-AA00-A-415A | 6160.0159 |

The listed variants should be available from stock. Other versions on request www.schurter.com/contact

Availability for all products can be searched real-time: <https://www.schurter.com/en/Stock-Check/Stock-Check-SCHURTER>

Packaging unit 100 Pcs

Mating Outlets/Connectors

Category / Description



[Power Supply Cord Overview complete](#)

Cord Sets 2.5 A, North America, Black, 2.5 m, SVT 2x18AWG, IEC C7p, 002500 mm, SVT 2x18 AWG, black

6052.0047

[Power Supply Cord further types to 2579](#)