

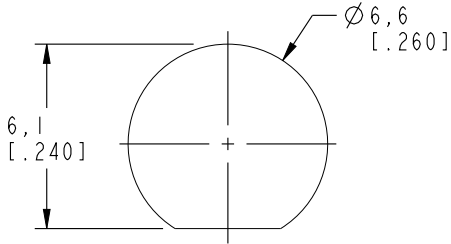
NOTES:

1. MATERIALS AND FINISHES::
SMA STR BHD JACK IP 67 - BRASS, GOLD PLATING
CABLE - 1.13 MM CABLE
2. ELECTRICAL
A. IMPEDANCE: 50 OHM
3. PACKAGING
A. QUANTITY: SINGLE PACK
B. MARKING : BAG TO BE MARKED
"AMPHENOL RF, 95-902-502-XXX AND DATE CODE"

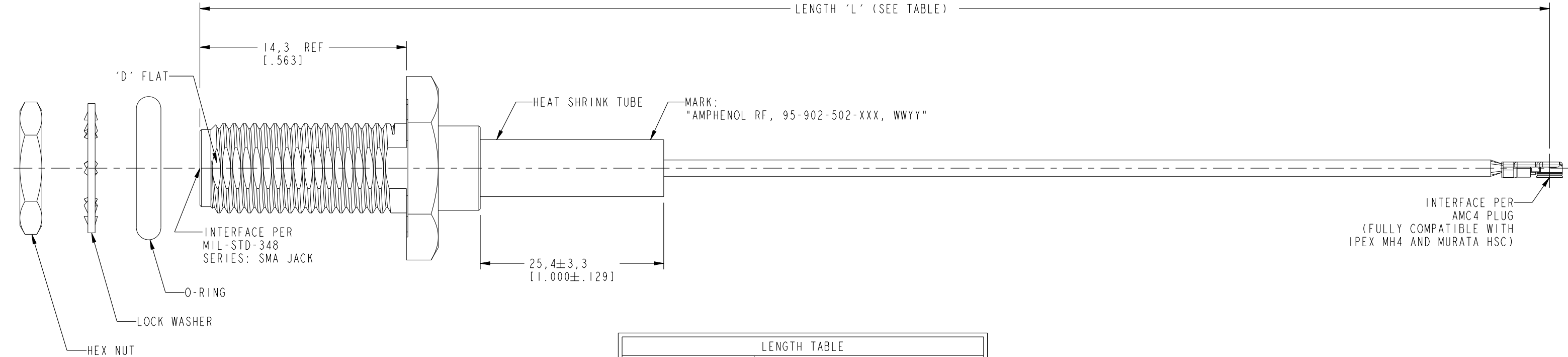
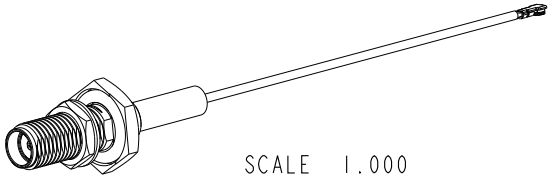
THIRD ANGLE PROJ.

REVISIONS

REV	DESCRIPTION	DATE	ECN	APPR
A	RELEASE TO MFG.	07-Nov-18	9565	VR



RECOMMENDED MOUNTING
HOLE DIMENSIONS



LENGTH TABLE

PART NUMBER (IMPERIAL)	LENGTH AND TOLERANCE 'L' IN MM (INCHES)
95-902-502-050	50.00 ± 3.81 [1.969 ± 0.150]
95-902-502-100	100.00 ± 3.81 [3.937± 0.150]
95-902-502-150	150.00 ± 3.81 [5.906± 0.150]
95-902-502-200	200.00 ± 5.08 [7.874± 0.200]
95-902-502-250	250.00 ± 5.08 [9.843± 0.200]
95-902-502-300	300.00 ± 5.08 [11.811± 0.200]

DESIGN REQUIREMENTS:

- ☒ FREQUENCY: DC - 6 GHz
- ☒ CONTINUITY
- ☐ VSWR: ____ MAX
- ☒ HI-POT: 200 VRMS
- ☐ INS. LOSS: ____dB MAX
- ☐ OTHERS:

CUSTOMER OUTLINE DRAWING
ALL OTHER SHEETS ARE FOR INTERNAL USE ONLY

UNLESS OTHERWISE SPECIFIED, DIMENSIONS ARE IN METRIC AND TOLERANCES ARE: <0.5mm 0.5 - 6mm 6 - 30mm 30 - 120mm ANGLES ± 0.05mm ±0.1mm ±0.2mm ± 0.3mm ±1°	MATERIAL	DRAWN	DATE	TITLE		Amphenol RF www.amphenolrf.com	
	SEE NOTES	VIJAY N M	17-Oct-18				
	REFERENCE	ENGINEER	DATE	SMA STR BHD JACK IP 67 TO AMC4 R/A PLUG USING 1.13 MM CABLE VARIOUS LENGTH		DRAWING NO. 95-902-502-XXX	
	EAR# 8685	VIJAY N M	17-Oct-18				
	REF:	APPROVED	DATE	SCALE: 3.8:1.0 SHEET 2 OF 2		ITEM NO. 95-902-502-XXX	
CONFIGURATION LEVEL: In Work	K.CAPOZZI	07-Nov-18					
NOTICE - These drawings, specifications, or other data (1) are, and remain the property of Amphenol corp. (2) must be returned upon request; and (3) are confidential and not to be disclosed to any person other than those to whom they are given by Amphenol Corp. the furnishing of these drawings, specifications, or other data by Amphenol Corp., or to any other person to anyone for any purpose is not to be regarded by implication or otherwise in any manner licensing, granting rights to permitting such holder or any other person to manufacture, use or sell any product, process or design, patented or otherwise, that may in any way be related to or disclosed by said drawings, specifications, or other data.	FINISH	CAD FILE	DWG SIZE		REV	PART NO. 95-902-502-XXX	
			B	A			