



### »» Features

- 70A high power automotive relay.
- High temperature endurance up to 125 degree C.
- Optional to be equipped with protection diode or resistor.
- Dust cover version, flux free type, sealed & weather proof type or flange cover version to be chosen.
- Tinned terminal is available on request.
- Comply with RoHS-Directive 2002/95/EC, and ELV-Directive 2000/53/EC.

### »» Type List

| Terminal style  | Contact form | Designation (provided with) | Enclosure style |               |                      |
|-----------------|--------------|-----------------------------|-----------------|---------------|----------------------|
|                 |              |                             | Dust cover      | Flux tight    | Sealed type washable |
| Socket terminal | 1A<br>(SPNO) | -----                       | 897-1AH-D       | 897-1AH-C     | 897-1AH-S            |
|                 |              | Resistor                    | 897-1AH-D-R1    | 897-1AH-C-R1  | 897-1AH-S-R1         |
| PCB terminal    | 1A<br>(SPNO) | -----                       | 897P-1AH-D      | 897P-1AH-C    | 897P-1AH-S           |
|                 |              | Resistor                    | 897P-1AH-D-R1   | 897P-1AH-C-R1 | 897P-1AH-S-R1        |

| Terminal style  | Contact form | Designation (provided with) | Enclosure style            |                            |
|-----------------|--------------|-----------------------------|----------------------------|----------------------------|
|                 |              |                             | Flanged cover (dust cover) | Flanged cover (flux tight) |
| Socket terminal | 1A<br>(SPNO) | -----                       | 897-1AH-D1                 | 897-1AH-C1                 |
|                 |              | Resistor                    | 897-1AH-D1-R1              | 897-1AH-C1-R1              |

| Terminal style  | Contact form | Designation (provided with) | Enclosure style            |                            |
|-----------------|--------------|-----------------------------|----------------------------|----------------------------|
|                 |              |                             | Steel bracket (dust cover) | Steel bracket (flux tight) |
| Socket terminal | 1A<br>(SPNO) | -----                       | 897-1AH-D1S                | 897-1AH-C1S                |
|                 |              | Resistor                    | 897-1AH-D1S-R1             | 897-1AH-C1S-R1             |

| Terminal style  | Contact form | Designation (provided with) | Enclosure style                        |   |
|-----------------|--------------|-----------------------------|--|---|
|                 |              |                             | Steel bracket (dust cover with shroud) | Steel bracket (dust cover with weather proof) |
| Socket terminal | 1A<br>(SPNO) | Resistor                    | 897-1AH-D1SF-R1                        | 897-1AH-D1SW-R1                               |

### »» Ordering Information

897      P    -   1AH   -   C    -   R1   -   T            001  
 1        2        3        4        5        6        7

- |   |  |
|---|--|
| <p>1. 897 -- Basic series designation</p> <p>2. Blank -- Socket terminal<br/>P -- PCB terminal</p> <p>3. 1AH -- Single pole normally open, contact material AgSnO</p> | <p>4. D -- Dust cover<br/>C -- Flux tight<br/>S -- Sealed type washable<br/>D1 -- Flanged cover (dust cover)<br/>C1 -- Flanged cover (flux tight)<br/>S1 -- Flanged cover (sealed type washable)<br/>D1S -- Steel bracket (dust cover)</p> |
|---|--|

- |      |  |  |          |   |
|------|--|--|----------|---|
| C1S  | -- Steel bracket (flux tight)                    | 6.   | Blank    | -- Standard type  |
| S1S  | -- Steel bracket (sealed type washable)          |  | <b>T</b> | -- Special requirement for Tin plated terminal                            |
| D1SF | -- Steel bracket (dust cover with shroud)        |  |          |   |
| D1SW | -- Steel bracket (dust cover with weather proof) | 7.   | Blank    | -- Standard type  |
|      |  |  | 001      | -- Coil parallel with diode IN4007 the positive pole "+" on # 85 terminal |
| 5.   | Blank  | -- Standard type   |          |   |
|      | R1   | -- Coil parallel with resistor 1/2W for 12V 680Ω , 24V 2700Ω | 002      | -- Coil parallel with diode IN4007 the negative pole "-" on # 85 terminal |

## »» Contact Rating

|                         |                      |
|-------------------------|----------------------|
| Max. Continuous current | 70A 14VDC, 25A 28VDC |
|-------------------------|----------------------|

## »» Coil Rating (DC)

| Rated voltage (V) | Rated current ±10 % at 23 °C (mA) | Coil resistance ±10 % at 23 °C (Ω) | Max. continuous Voltage at 85 °C <sup>(1)</sup> | Pick up voltage(Max) at 23 °C | Drop out voltage(Min) at 23 °C | Power consumption at rated voltage |
|-------------------|-----------------------------------|------------------------------------|---|-------------------------------|--------------------------------|------------------------------------|
| 12                | 133                               | 90                                 | 100 % of  | 65 % of                       | 10 % of                        | approx. 1.6W                       |
| 24                | 66.7                              | 360                                | rated   | rated                         | rated                          |                                    |
|                   |                                   |                                    | voltage   | voltage                       | voltage                        |                                    |

Notes : (1) Continuous contact current at 50A.

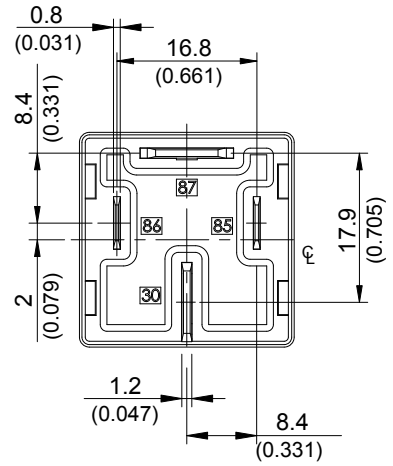
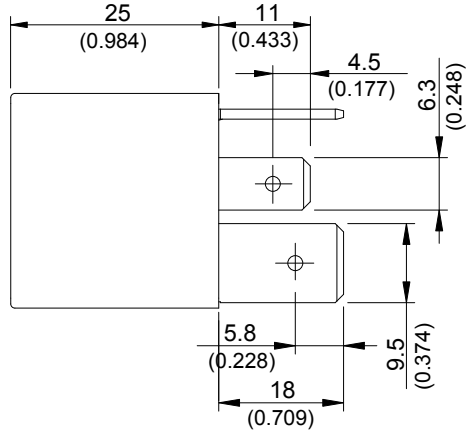
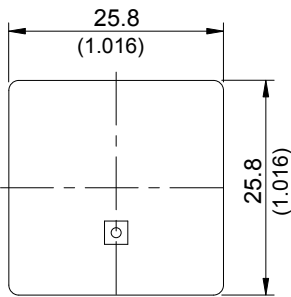
## »» Specification

|                                      |                          |   |
|--------------------------------------|--------------------------|---|
| Contact material                     | AgSnO alloy              |   |
| Contact voltage drop <sup>(1)</sup>  | Typ. 30mV at 10A         |   |
| Insulation resistance <sup>(1)</sup> | 20 MΩ Min. (DC 500V)     |   |
| Operate time <sup>(1)</sup>          | 20ms Max.                |   |
| Release time <sup>(1)</sup>          | 20ms Max.                |   |
| Dielectric strength <sup>(1)</sup>   | Between open contact     | : AC 500V , 50/60Hz 1 min.                                |
|                                      | Between contact and coil | : AC 500V , 50/60Hz 1 min.                                |
| Vibration resistance                 | Operating extremes       | 10~55Hz , amplitude 2mm                                   |
| Shock resistance                     | Operating extremes       | 10G   |
|                                      | Damage limits            | 100G  |
| Life expectancy                      | Mechanical               | 10,000,000 operations<br>(frequency 18,000 operations/hr) |
|                                      | Electrical               | 100,000 operations<br>(frequency 1,200 operations/hr)     |
| Temperature range                    | Operating                | -40~+125 °C (no freezing)                                 |
| Weight                               | Approx. 40 g             |   |

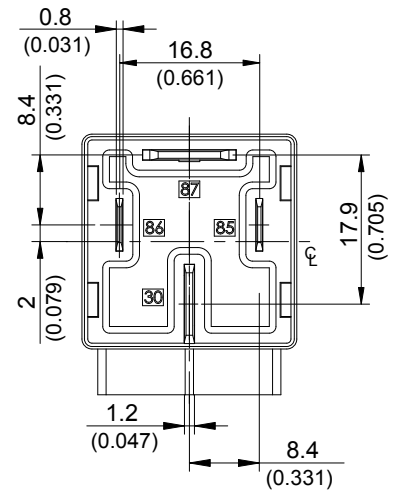
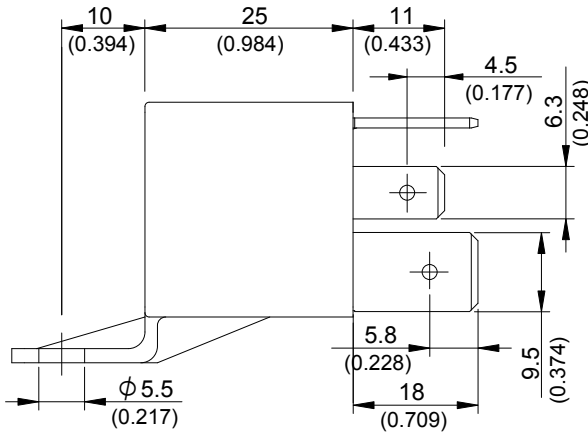
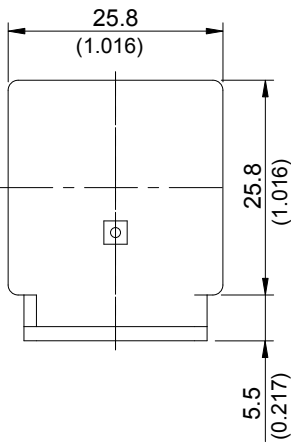
Note : (1) initial value

»» Outline Dimensions

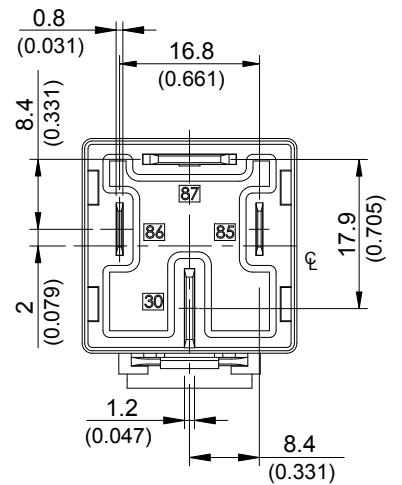
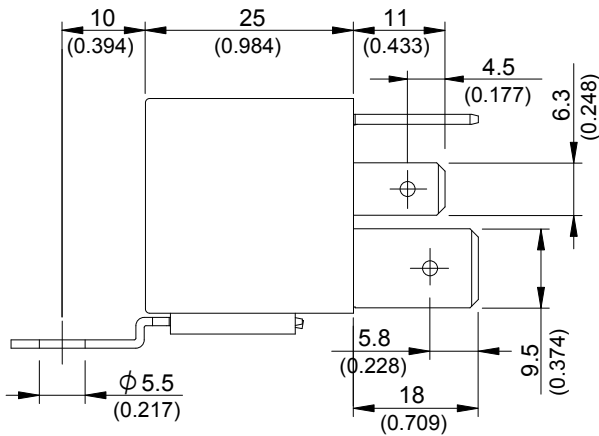
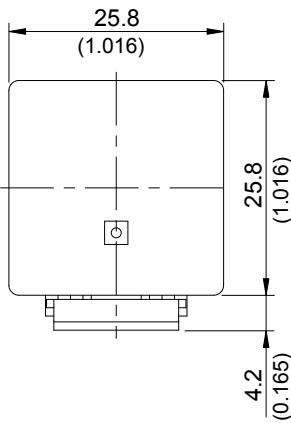
◆ 897 (C,D,S)



◆ 897 (C1,D1,S1)



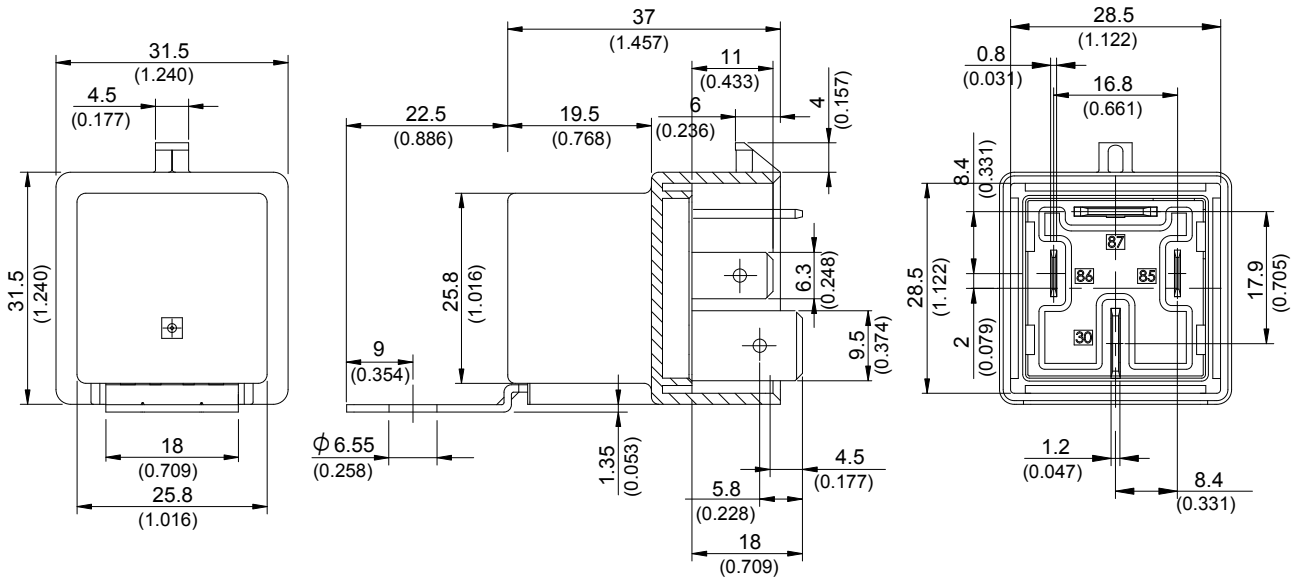
◆ 897 (C1S,D1S,S1S)



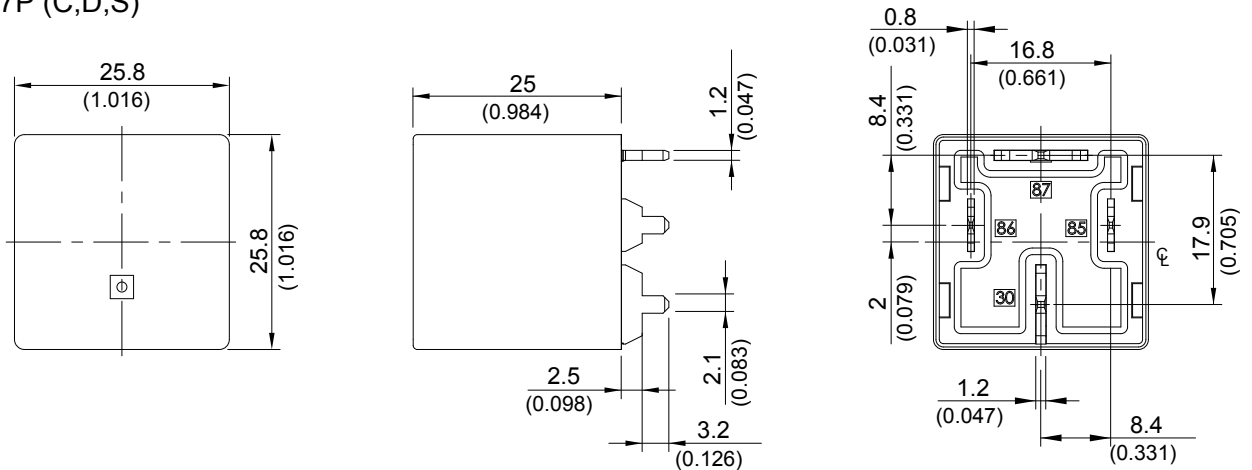
## ◆897 (D1SW)



## ◆897 (D1SF)

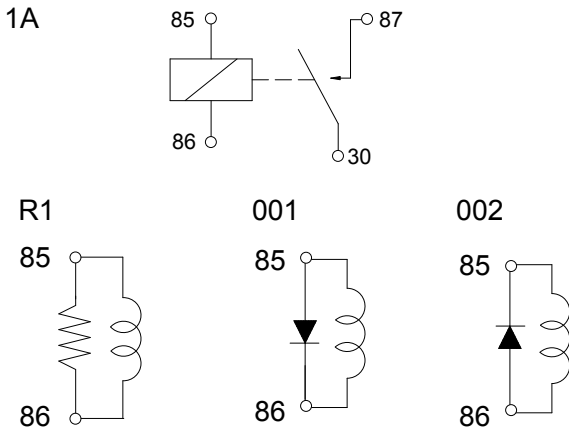


## ◆897P (C,D,S)



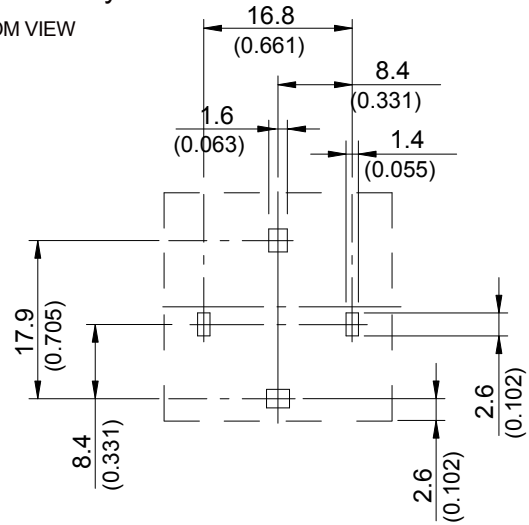
### »» Wiring Diagram

BOTTOM VIEW



### »» PC Board Layout

BOTTOM VIEW



### »» Engineering Data

Safe breaking, arc extinguished  
(normally open contact) for resistive loads.

