

REFERENCE SPECIFICATIONS

-NFC 93425 (in compliance with HE 507)

PHYSICAL CHARACTERISTICS

- INSULATOR MATERIAL: THERMOPLASTIC ,UL94V0
- ACCESSORIES: BRASS
- SHELLS: STEEL

ELECTRICAL CHARACTERISTICS

- CONTACT/CONTACT : >=1000 V
- CONTACT/GROUND : >=1200 V
- INSULATION RESISTANCE: >=5000 MOhms

ENVIRONMENTAL CHARACTERISTICS

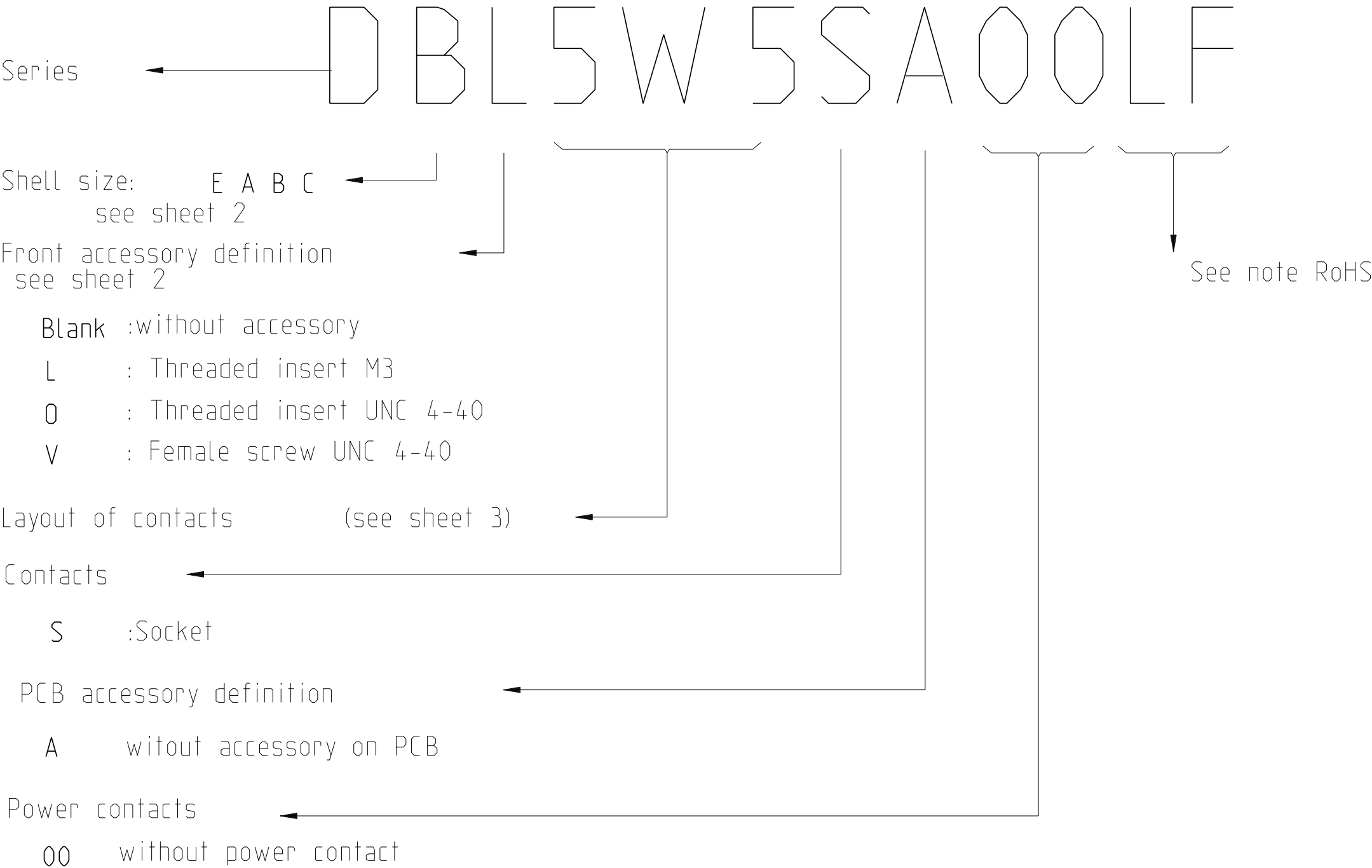
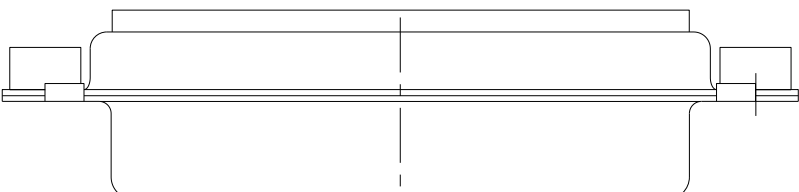
- CLIMATIC CATEGORY: 55/125/21
- TEMPERATURE RANGE -55°C TO +125°C
- DAMP HEAT STEADY STATE 21 DAYS
- SALT SPRAY 24 HOURS

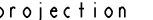


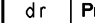
MECHANICAL CHARACTERISTICS

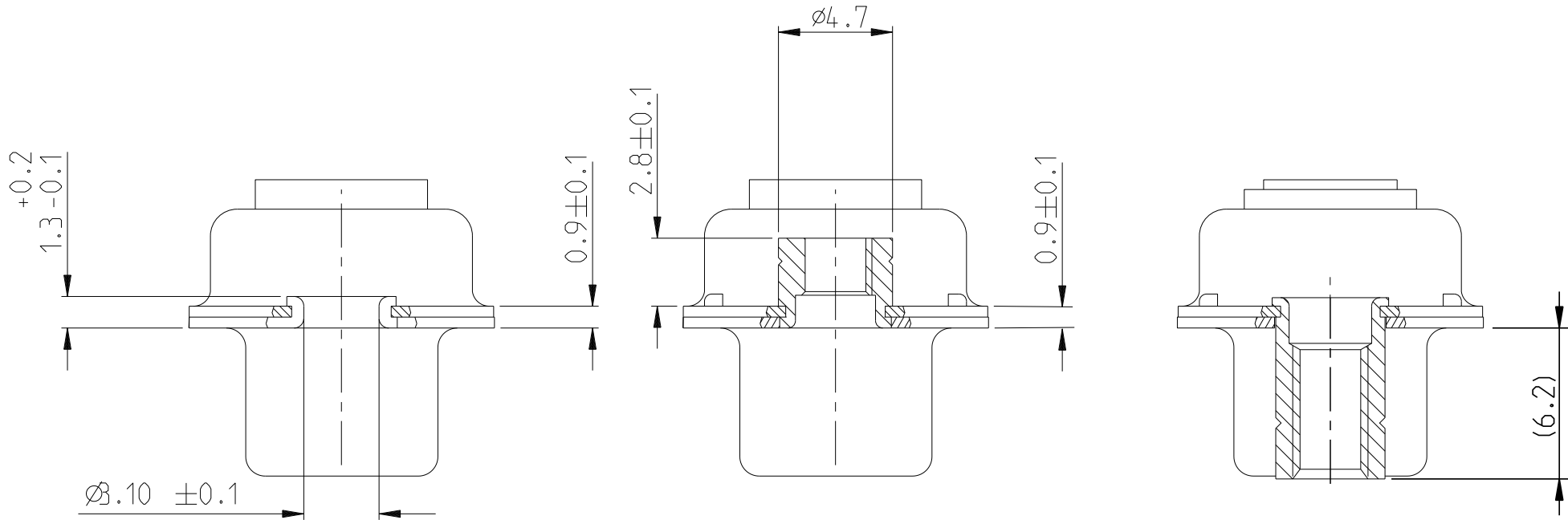
- RETENTION AGAINST TORQUE:
 - Threaded insert: 0.7 N.m minimum
 - Female screw : 0.5 N.m minimum

NOTE ROHS INFORMATION

- The “LF” products meet european union Directives and other country regulations as described in GS-22-008.
- Shell plating :2 to 4µm Cu+ Ni + 3 to 10µmm Sn(pure bright)
- Accessories: Sn pure bright + nickel
- Packaging spec: See GS-14-920



spec ref				dr	Pro Engineer 1	2015/06/16			size	A2	scale	2:1				
tolerance std	TOLERANCES UNLESS OTHERWISE SPECIFIED			eng	J Dalibard	2016/09/13			ecn no	ECN-ELX-F-24942-1						
				chr	J Dalibard	2016/09/19										
				appr	Aymeric Soudy	2016/09/20	product family		-	rel level		Released				
surface		linear	0.X	±0.3		title				SUB FEMALE DW		dwg no	C01-8639-2311		rev	E
			0.XX	±0.10												
			0.XXX	±0.05												
		angular	0°	±2°		cat. no.		-	Product - Customer Drw				sheet 1 of 4			



FRONT ACCESSORY	Blank without	L insert M3 O insert UNC 4.40	V Female screw UNC 4-40
PCB ACCESSORIES	A without	A without	A without

PART NUMBER	FRONT ACCESSORY	PCB ACCESSORY
D*W xSA00LF	WITHOUT	WITHOUT
D*VxW xSA00LF	Female screw UNC 4-40	WITHOUT
D*LxW xSA00LF	Insert M3	WITHOUT
D*OxW xSA00LF	Insert UNC 4-40	WITHOUT

shell size LAYOUTS

E	2V2
A	3V3
A	3W3
B	5W5
C	8W8

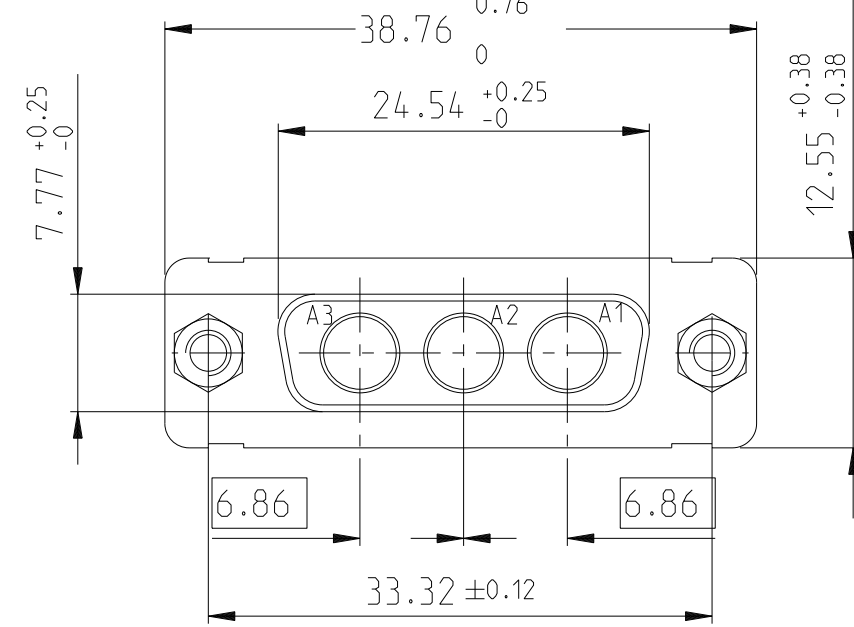
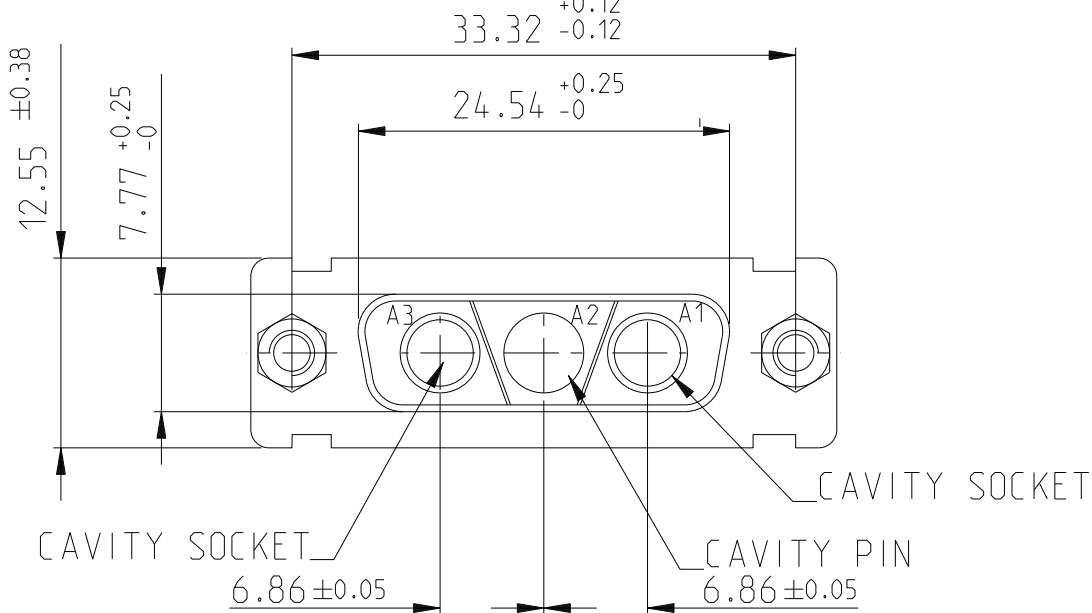
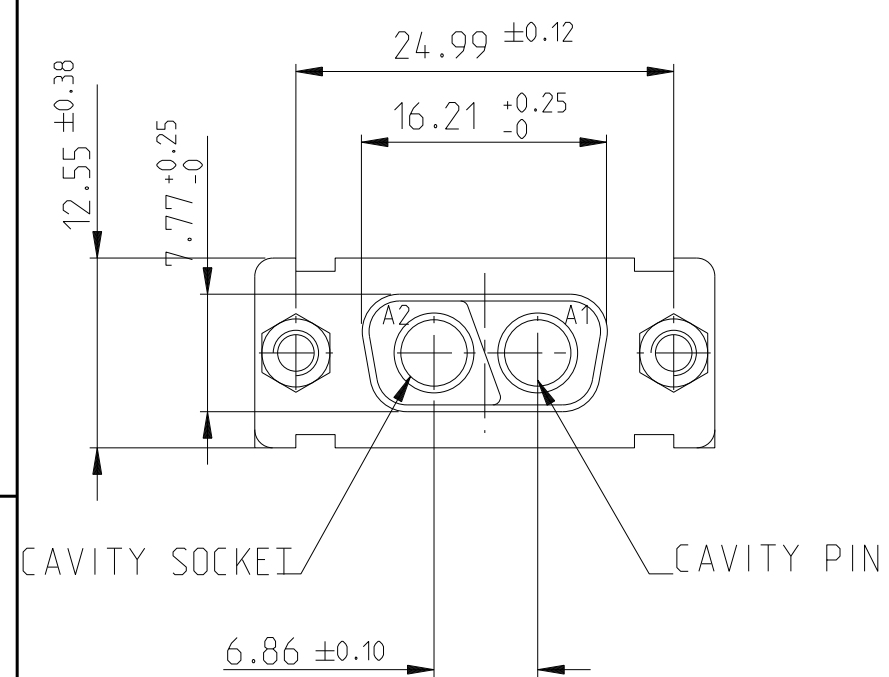
SCALE:4

spec ref				dr	Pro Engineer 1	2015/06/16			size	scale
tolerance std				eng	J Dalibard	2016/09/13			A2	2:1
TOLERANCES UNLESS OTHERWISE SPECIFIED				chr	J Dalibard	2016/09/19			ecn no	ECN-ELX-F-24942-1
				appr	Aymeric Soudy	2016/09/20			product family	
surface	✓	linear	0.X	±0.3	Amphenol FCI	title	SUB FEMALE DW	dwg no	C01-8639-2311	rev
			0.XX	±0.10						
			0.XXX	±0.05						
		angular	0°	±2°						
full power without contact										

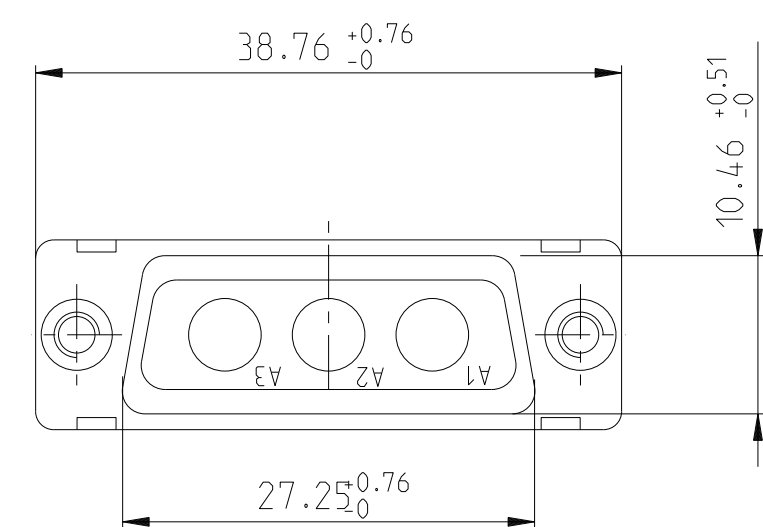
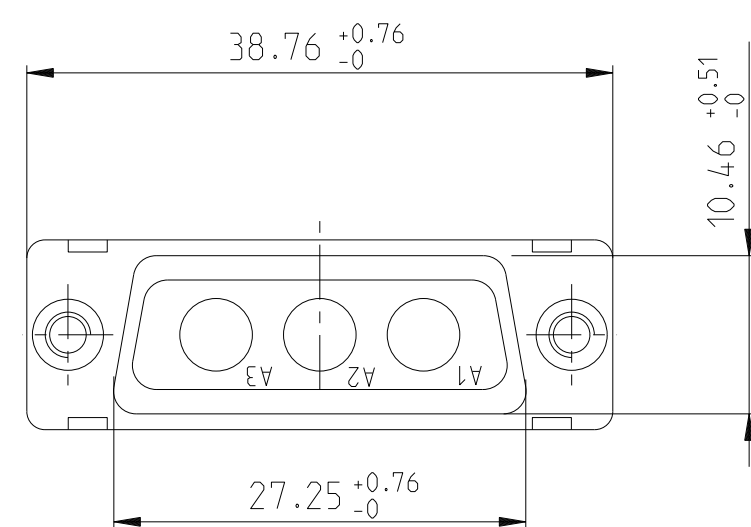
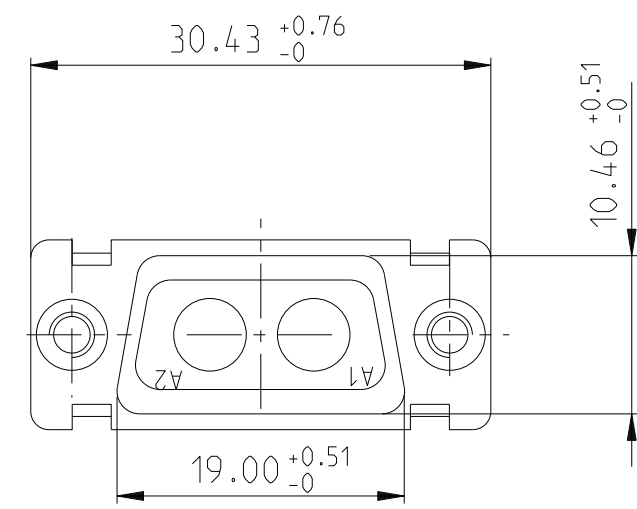
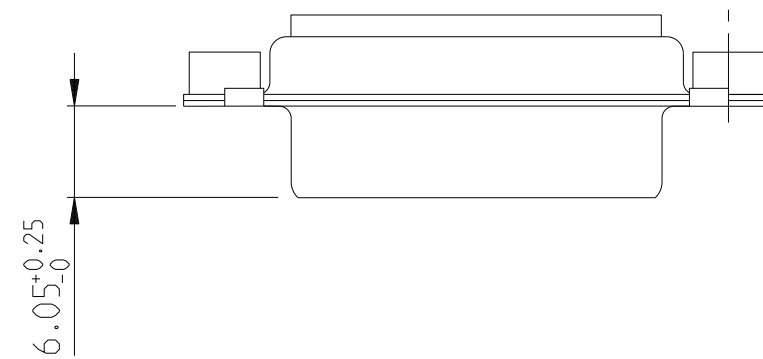
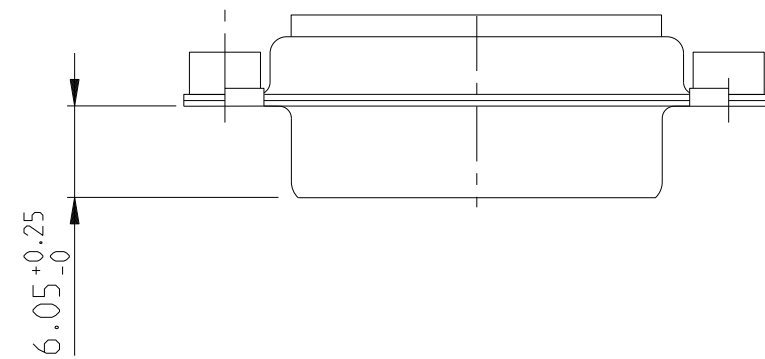
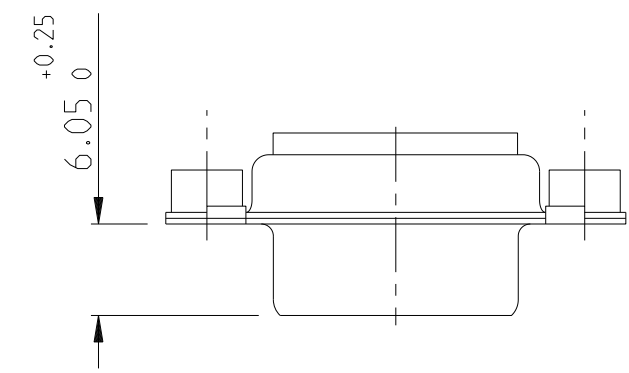
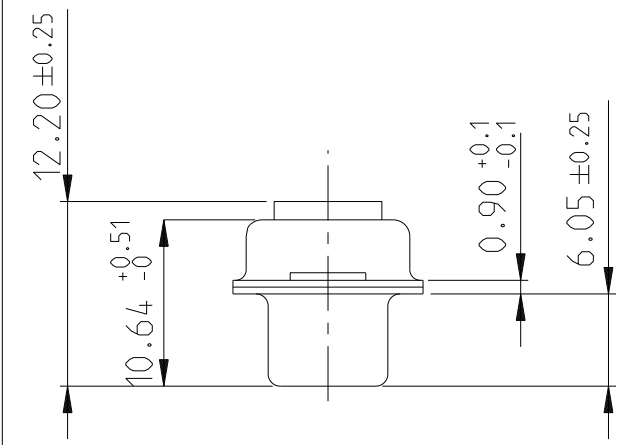
2V2

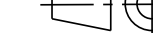

3V3

3W3

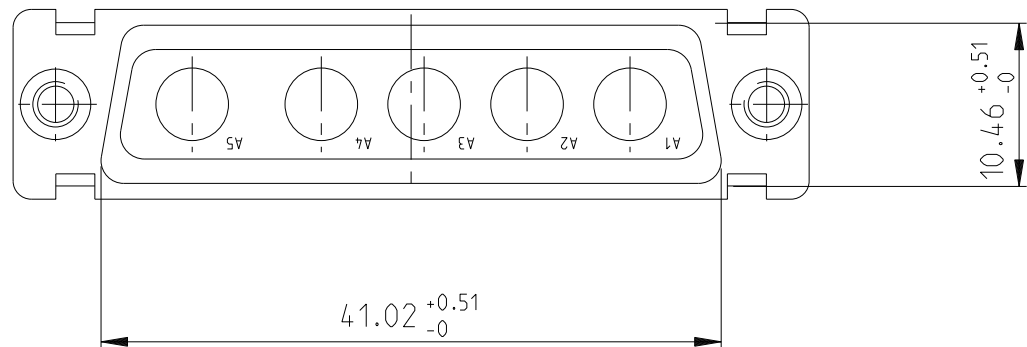
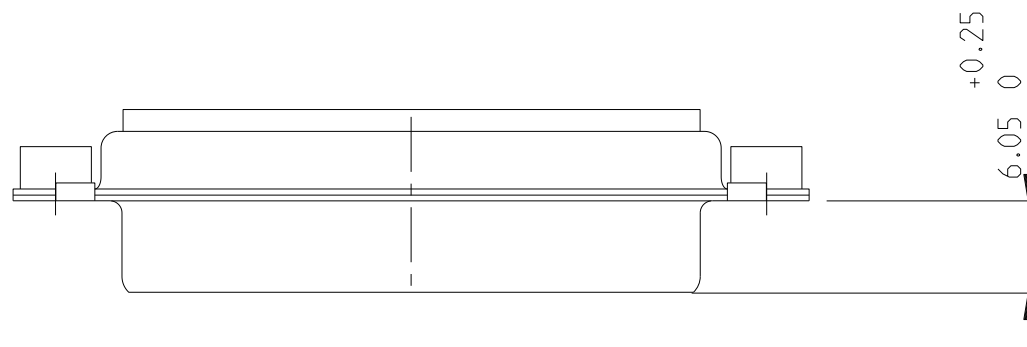
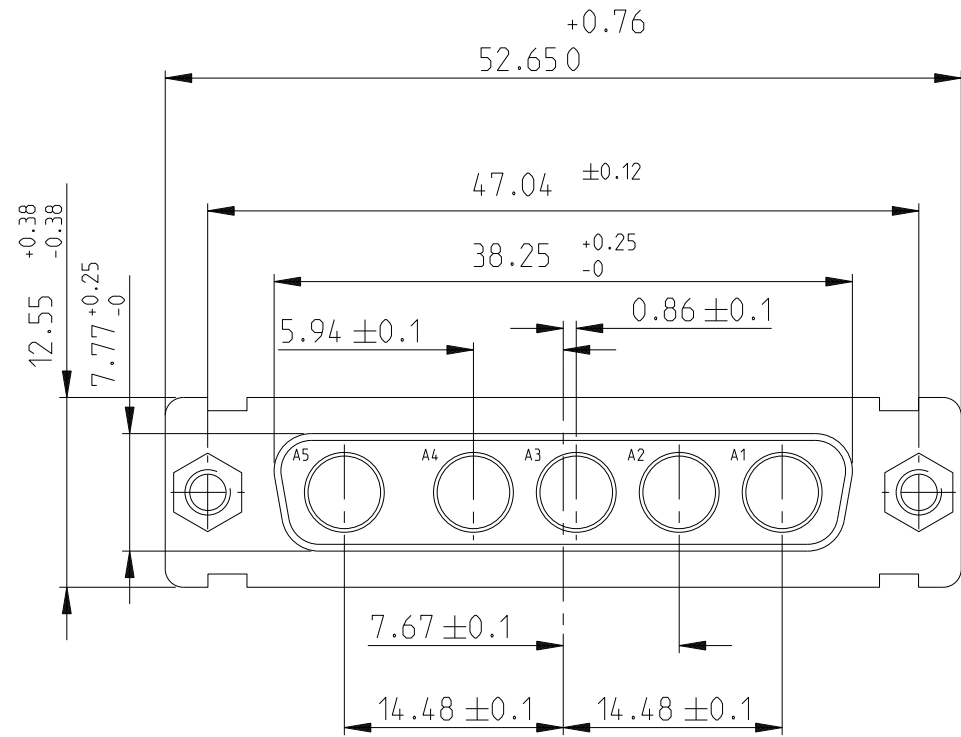


SIDE VIEW FOR
LAYOUTS: E A B C

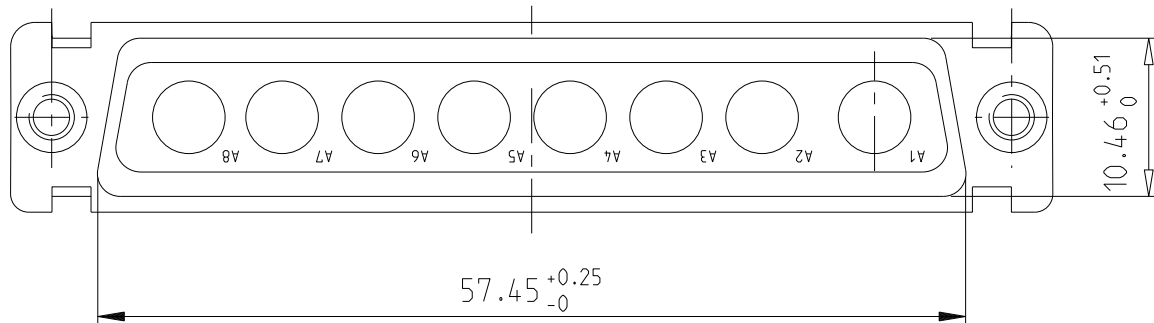
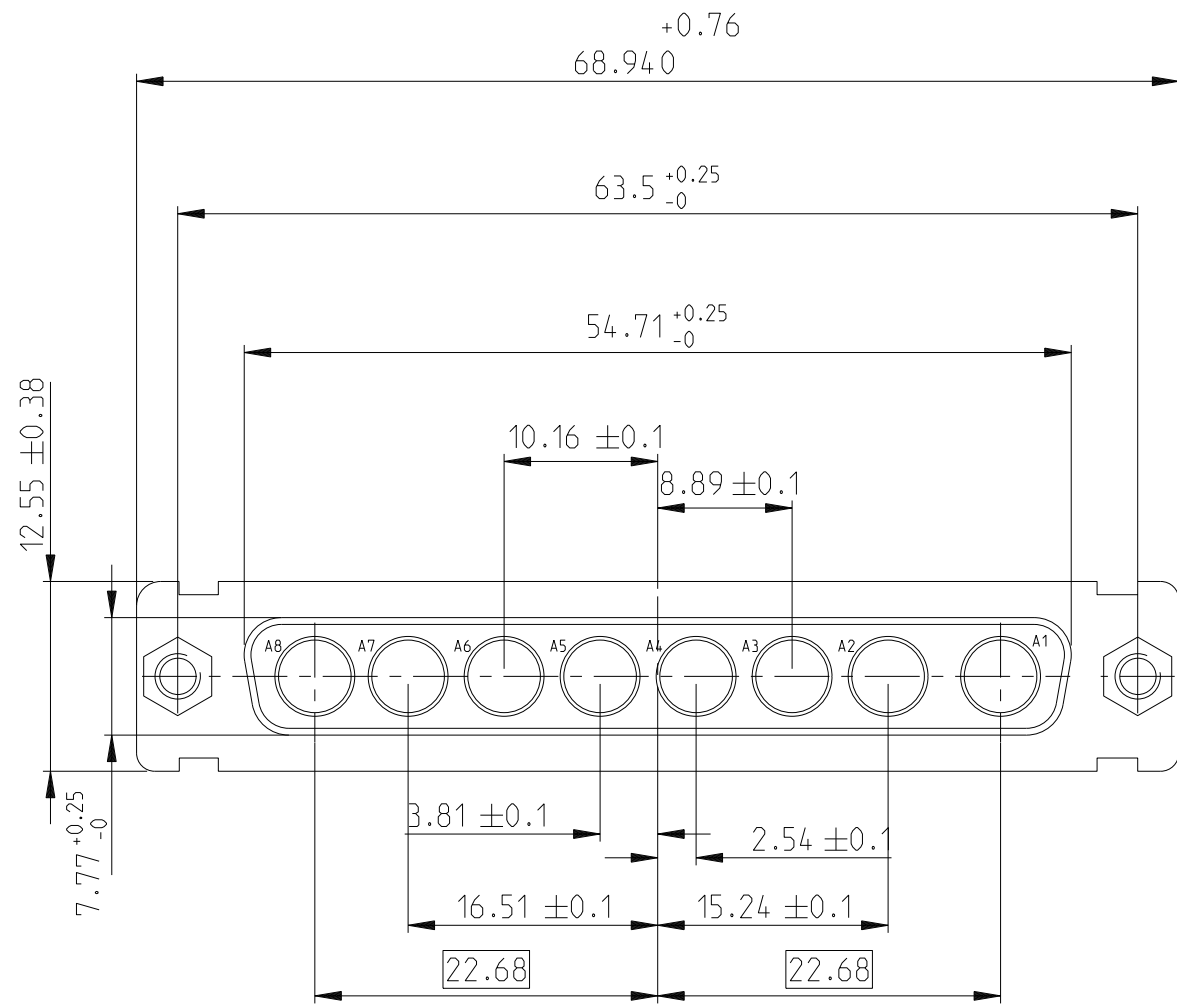


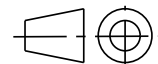

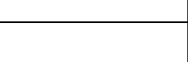
spec ref				dr		Pro Engineer 1		2015/06/16		projection		mm		size		scale			
tolerance std				eng		J Dalibard		2016/09/13						A2		2:1			
TOLERANCES UNLESS OTHERWISE SPECIFIED				chr		J Dalibard		2016/09/19						ecn no				ECN-ELX-F-24942-1	
				appr		Aymeric Soudy		2016/09/20						product family				- rel level	
surface		linear		0.X		±0.3		Amphenol FCI		title		SUB FEMALE DW		dwg no		C01-8639-2311		rev	
				0.XX		±0.10													
				0.XXX		±0.05													
				angular		0°		±2°				cat. no.		-		Product - Customer Drw		sheet 3 of 4	

5W 5



8W 8



spec ref			dr	Pro Engineer 1	2015/06/16			size	A2	scale	2:1		
tolerance std			eng	J Dalibard	2016/09/13			ecn no			ECN-ELX-F-24942-1		
TOLERANCES UNLESS OTHERWISE SPECIFIED			chr	J Dalibard	2016/09/19			rel level			Released		
			appr	Aymeric Soudy	2016/09/20	product family							
	linear	0.X	±0.3	Amphenol FCi	title	SUB FEMALE DW			dwg no	C01-8639-2311		rev	E
		0.XX	±0.10										
		0.XXX	±0.05										
	angular	0°	±2°										