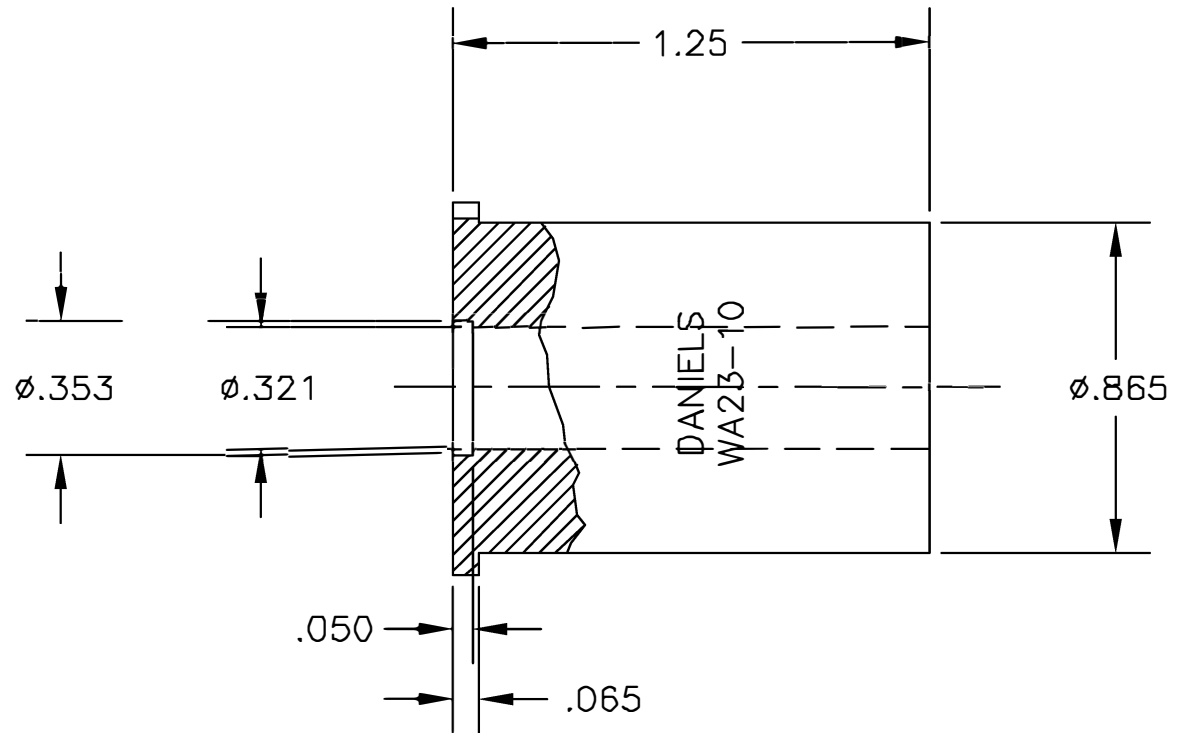
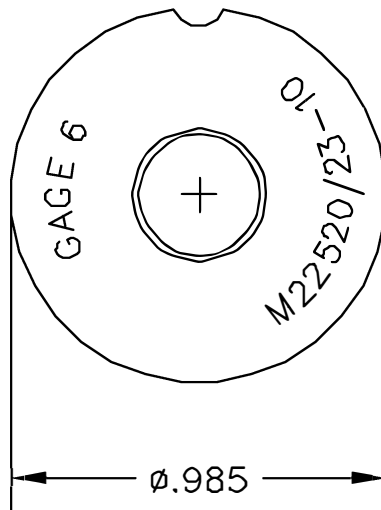



UNCONTROLLED DOCUMENT  
WILL NOT BE UPDATED

REVISIONS				
REV. SYM.	E.C.O. NUMBER	DESCRIPTION	BY DATE	APP'D DATE
1		ORIGINAL RELEASE	JWJ 3/22/04	RRR 3/22/04



<b>RESTRICTED &amp; CONFIDENTIAL</b>  CONFIDENTIAL PROPERTY OF DANIELS MANUFACTURING CORP. NOT TO BE DISCLOSED TO OTHERS, REPRODUCED OR USED FOR ANY OTHER PURPOSE, EXCEPT AS AUTHORIZED IN WRITING BY DANIELS MANUFACTURING. MUST BE RETURNED TO DANIELS MANUFACTURING CORP. ON COMPLETION OF ORDER OR OTHER PURPOSE FOR WHICH LENT.		<b>MATERIAL</b>   <b>HEAT TREAT</b>   <b>FINISH</b>		ITEM	PART NO.	QTY.	DESCRIPTION/REMARKS	
				DRN.	J. JOYCE	DATE 3/22/04	 <b>DANIELS MANUFACTURING CORP.</b> ORLANDO, FLORIDA GAGE 11851	
				CHK'D.	RRR	DATE 3/22/04		
				APP'D.		DATE		
<b>DO NOT SCALE DRAWING</b>				APP'D.		DATE	<b>LOCATOR ENVELOPE DRAWING</b>  WHERE USED: SIZE A SCALE NTS CAD P/N WA23-10-ENV SHEET OF 1 1 POSTING DWG. NO. WA23-10-ENV REV. 1	
				NOTE:				
				THIS DRAWING IS AN OUTLINE DRAWING OF THE RESPECTIVE DMC PART NUMBER INDICATED. ACTUAL DMC PART NUMBER IS DRAWING NUMBER WITHOUT THE "-ENV" SUFFIX.				