

Photovoltaic connector - PV-FT-CM-C-4-155-RD - 1705254


Please be informed that the data shown in this PDF Document is generated from our Online Catalog. Please find the complete data in the user's documentation. Our General Terms of Use for Downloads are valid (<http://phoenixcontact.com/download>)



Photovoltaic connector, Photovoltaic connector, color: black, Min. wire cross section: 4, Connection method: Crimp, Type of contact: Pin, Cable length: 155. can only be released using a tool

RoHS

Key Commercial Data

Packing unit	50 pc
Minimum order quantity	50 pc
GTIN	 4 046356 760812
GTIN	4046356760812

Technical data

Dimensions

Fixed cable length	155 mm
External cable diameter	4.6 mm ±0.15 mm

Ambient conditions

Degree of protection (when plugged in)	IP66 / IP68 (2 m / 24 h)
Degree of protection (not plugged in)	IP65
Ambient temperature (operation)	-40 °C ... 85 °C
Ambient temperature (assembly)	-25 °C ... 50 °C

General

Design	Pin
Tightening torque nut	1.8 Nm ±0.1 Nm
Insertion force	45 N ±10 N
Disconnect force	250 N ±50 N
Pull-out force of cable >= disconnect force	> 80 N
Rated voltage	1500 V
Rated current (4.0 mm ²)	40 A
Nominal cross section	4 mm ²

Photovoltaic connector - PV-FT-CM-C-4-155-RD - 1705254

Technical data

General

Protection class	II
------------------	----

Material

Color	black
Insulating material	mPPE
Contact material	Cu
Contact surface material	Ag
Flammability rating according to UL 94	V0

Connection data

Connection method	Crimp
Connection capacity	4 mm ²
Contact resistance with connected conductor	0.45 mΩ
Cable type	S02

Conductor

Outer sheath, material	PE-X
External sheath, color	red

Standards and Regulations

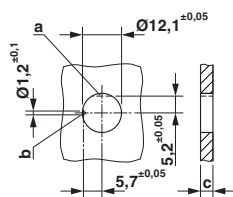
Flammability rating according to UL 94	V0
--	----

Environmental Product Compliance

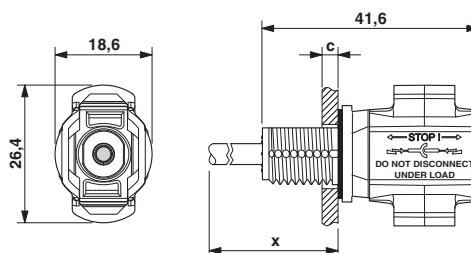
China RoHS	Environmentally friendly use period: unlimited = EFUP-e
	No hazardous substances above threshold values

Drawings

Dimensional drawing



Dimensional drawing



Dimension x = cable length
 c: panel thickness - plastic: 2 - 6 mm; metal: 2 - 5 mm

Approvals

Approvals

Photovoltaic connector - PV-FT-CM-C-4-155-RD - 1705254

Approvals


Approvals

TÜV Rheinland / VDE Zeichengenehmigung / EAC

Ex Approvals

Approval details

TÜV Rheinland	http://www.certipedia.com	R 60126961
Nominal voltage UN	1500 V	

VDE Zeichengenehmigung		http://www2.vde.com/de/Institut/Online-Service/VDE-gepruefteProdukte/Seiten/Online-Suche.aspx	40031807
Nominal voltage UN		1500 V	
Nominal current IN		40 A	
mm ² /AWG/kcmil		4	

EAC		B.01742
-----	---	---------

Phoenix Contact 2018 © - all rights reserved
<http://www.phoenixcontact.com>

PHOENIX CONTACT GmbH & Co. KG
Flachsmarktstr. 8
32825 Blomberg
Germany
Tel. +49 5235 300
Fax +49 5235 3 41200
<http://www.phoenixcontact.com>