

PRODUCT NUMBERING:

10137239 - 0 0 X X LF

LEAD FREE

0: INSULATION DIAMETER 1.05 - 1.15mm (L)

1: INSULATION DIAMETER 0.93 - 1.05mm (M)

1: PLUG TOP SHELL TYPE I

2: PLUG TOP SHELL TYPE II

NOTES:

1. APPLICABLE CABLE: RECOMMENDED AWG- 30~26 X 8C

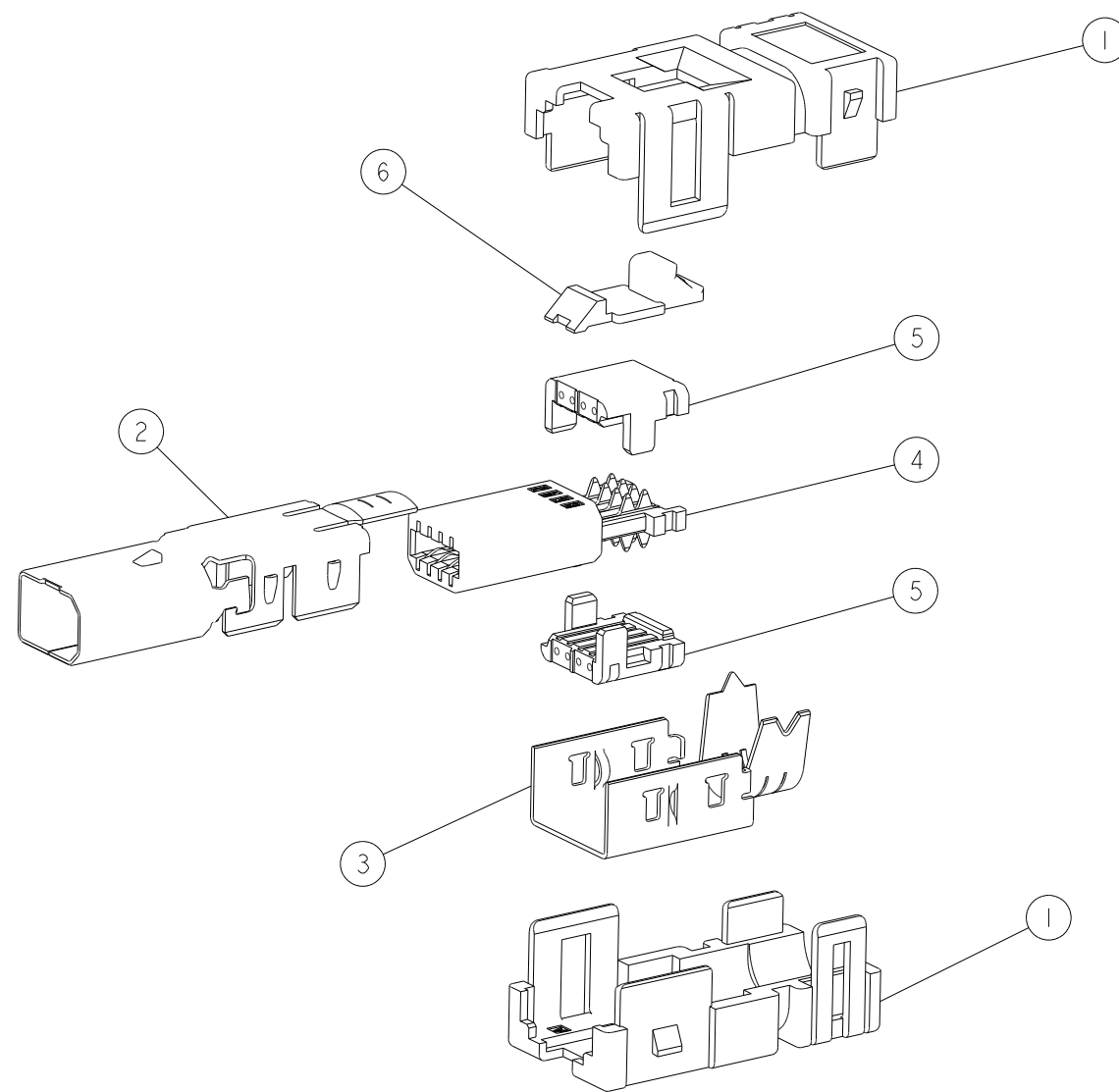
MAX AWG22 x4C

OVERALL DIAMETER 6.7MAX.

2. DATE CODE IS DESCRIBED ON THE BOUNDED CUSTOMER DRAWING.

3. PACKAGING SPEC GS-14-2538

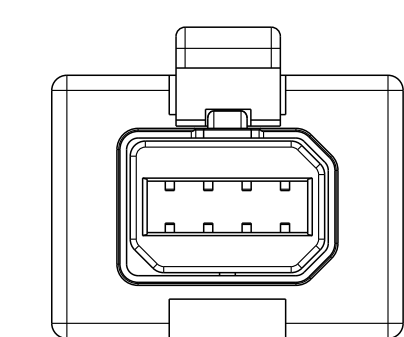
4. APPLICATION SPEC FOR HANDTOOL: GS-20-0484



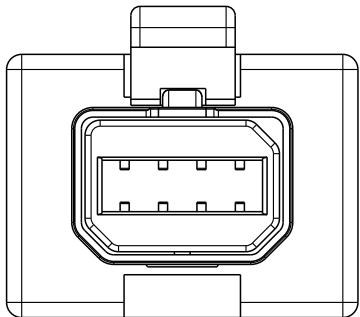
10137239-0010LF
SHOWN

| S.NO | PART NAME | MATERIAL/FINISH | -0010LF | -0020LF | -0011LF | -0021LF |
|------|------------------------------------|---|---------|---------|---------|---------|
| 1 | PLUG COVER HSG | THERMO PLASTIC | 2 | 2 | 2 | 2 |
| 2 | PLUG TOP SHELL TYPE I | MATERIAL: COPPER ALLOY FINISH: Ni PLATING | 1 | - | 1 | - |
| | PLUG TOP SHELL TYPE II | MATERIAL: COPPER ALLOY FINISH: Ni PLATING | - | 1 | - | 1 |
| 3 | BOTTOM SHELL | MATERIAL: COPPER ALLOY FINISH: Ni PLATING | 1 | 1 | 1 | 1 |
| 4 | PLUG SUB ASSY | HSG MATERIAL: THERMO PLASTIC CONTACT MATERIAL: COPPER ALLOY FINISH: Ni PLATING ALL OVER CONTACT AREA Au PLATING TERMINATION AREA Au PLATING | 1 | 1 | 1 | 1 |
| 5 | CABLE HSG Ø1.05-1.15 COLOR BLUE | THERMO PLASTIC | 2 | 2 | - | - |
| | CABLE HSG Ø0.93-1.05 COLOR: RED | | - | - | 2 | 2 |
| 6 | LOCK HSG | THERMO PLASTIC | 1 | 1 | 1 | 1 |

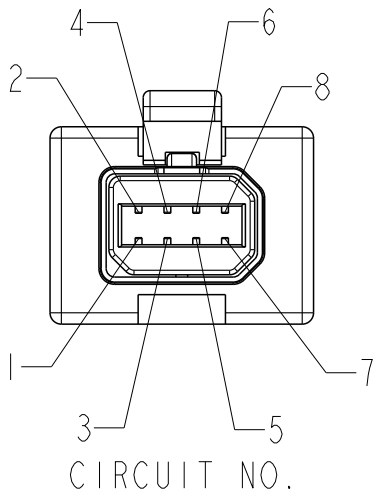
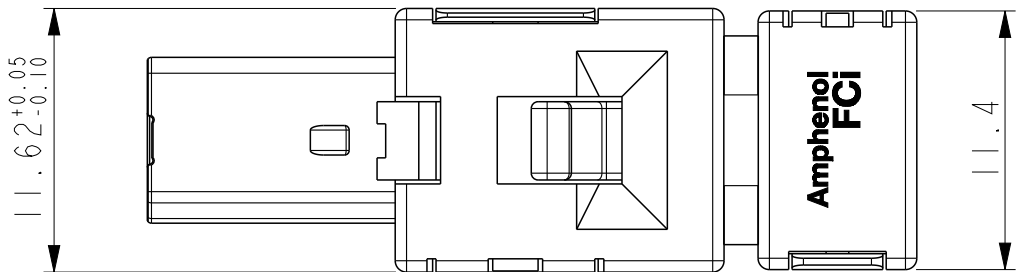
| | | | | | | | | | | | | | |
|--|---------------------------------------|------------|------|-----------------|-------------|--|-----------------------------------|---------------------------|------------|----------------|--------------|-----------|----------|
| spec ref | | GS-12-1347 | | dr | A P Sawanth | 2016/09/07 | <div>projection</div> <div></div> | <div>mm</div> <div></div> | size | A3 | scale | 3:1 | |
| tolerance std | TOLERANCES UNLESS OTHERWISE SPECIFIED | | | eng | Mike Zhou | 2017/11/13 | | | ecn no | ELX-N-28452-1 | | | |
| | | | | chr | - | - | | | | | | | |
| | | | | appr | | Tim Yao | | | 2017/11/13 | product family | | rel level | Released |
| <div>surface</div> <div>ISO 1302</div> | linear | 0.X | ±0.5 | Amphenol FCi | title | INDUSTRIAL MINI I/O PIERCING PLUG CONN KIT | | | dwg no | 10137239 | | rev | B |
| | | 0.XX | ±- | | | | | | | | | | |
| | | 0.XXX | ±- | | | | | | | | | | |
| | | angular | 0° | ±-° | | cat. no. | Product - Customer Drw | | | | sheet 1 of 2 | | |



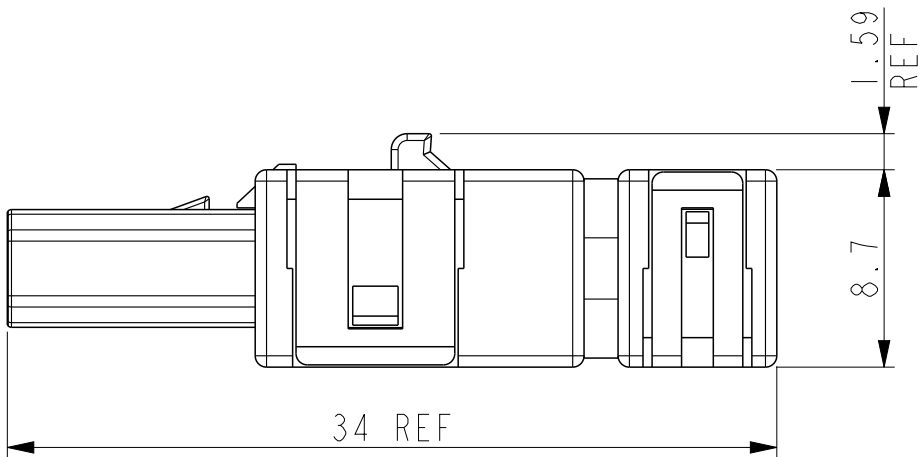
MATING SHAPE : TYPE I
-0010LF, -0011LF
SCALE 4:1



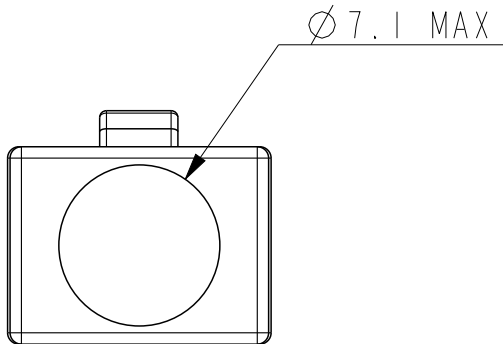
MATING SHAPE : TYPE II
-0020LF, -0021LF
SCALE 4:1


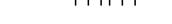



CIRCUIT NO.



10137239-0010LF
SHOWN



| | | | | | | | | | | | | | | | |
|--|---------------------------------------|------------|------|-------------------------|-------------|--|------------|------------|---|---|--------------|------------------------------|-----------------|-----|--|
| spec ref | | GS-12-1347 | | dr | A P Sawanth | | 2016/09/07 | | projection  | mm  | size | A3 | scale | 3:1 | |
| tolerance std | TOLERANCES UNLESS OTHERWISE SPECIFIED | | | eng | Mike Zhou | | 2017/11/13 | | | | ecn no | ELX-N-28452-1 | | | |
| | | | | chr | - | | - | | | | | | | | |
| ISO 406 ISO 1101 | | | | | appr | Tim Yao | | 2017/11/13 | | product family | | rel level Released | | | |
| surface  ISO 1302 | linear | 0.X | ±0.5 | Amphenol FCi | title | INDUSTRIAL MINI I/O PIERCING PLUG CONN KIT | | | | dwg no | 10137239 | | rev B | | |
| | | 0.XX | ±- | | | | | | | | | | | | |
| | | 0.XXX | ±- | | | | | | | | | | | | |
| | angular | 0° | ±-° | | cat. no. | Product - Customer Drw | | | | | sheet 2 of 2 | | | | |