



SIPSMT05-12 SERIES

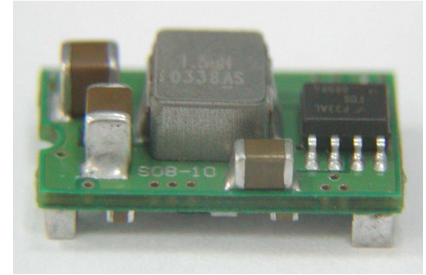
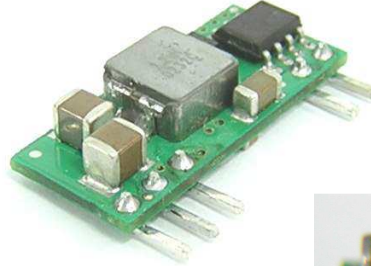
5 AMP

POL CONVERTERS



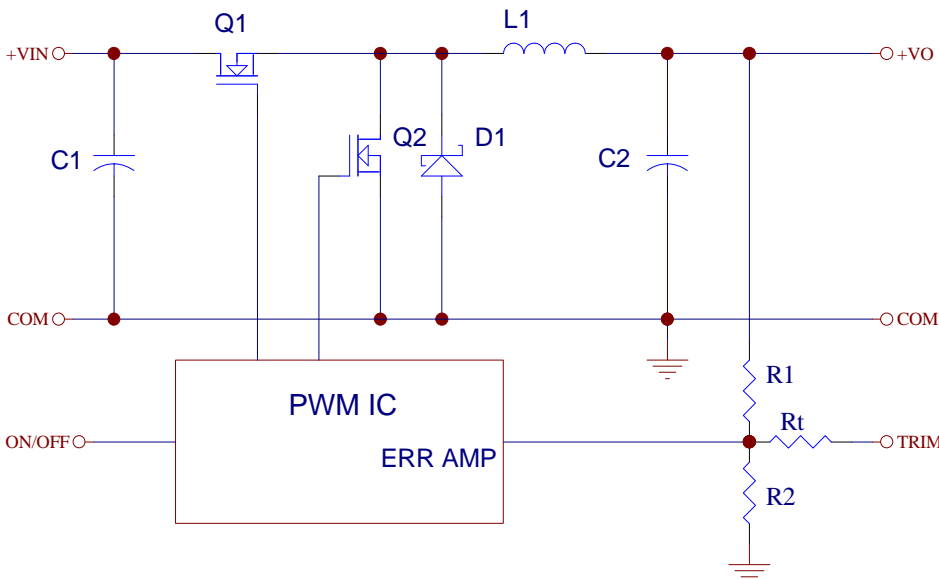
FEATURES

- * Non-isolated POL Converter
- * SIP / SMT Package
- * Output Current 5AMP
- * Input Voltage Range 8.3 –14VDC
- * Output Voltage Range 0.75-5VDC
- * High Efficiency to 92%
- * Over Temperature Protection
- * Continuous Short Circuit Protection
- * Remote ON/OFF Control
- * UL/C-UL60950 Certified



| MODEL NUMBER | INPUT VOLTAGE | OUTPUT VOLTAGE | OUTPUT CURRENT | INPUT CURRENT | | Efficiency (%) |
|------------------------------|---------------|----------------|----------------|---------------|-----------|----------------|
| | | | | NO LOAD | FULL LOAD | |
| SIP05-12S05A SMT05-12S05A | 8.3 – 14VDC | 0.75VDC | 5A | 20mA | 428mA | 73 |
| | | 1.2VDC | 5A | 25mA | 625mA | 80 |
| | | 1.5VDC | 5A | 25mA | 762mA | 82 |
| | | 1.8VDC | 5A | 30mA | 893mA | 84 |
| | | 2.0VDC | 5A | 30mA | 980mA | 85 |
| | | 2.5VDC | 5A | 35mA | 1197mA | 87 |
| | | 3.3VDC | 5A | 45mA | 1545mA | 89 |
| | | 5.0VDC | 5A | 50mA | 2264mA | 92 |

NOTE: Nominal Input Voltage 12VDC



| Vo,set (V) | Rtrim (KΩ) |
|------------|------------|
| 0.75 | Open |
| 1.2 | 22.33 |
| 1.5 | 13.0 |
| 1.8 | 9.0 |
| 2.0 | 7.4 |
| 2.5 | 5.0 |
| 3.3 | 3.12 |
| 5.0 | 1.47 |

Table 1. External Resistor Values for programming output voltage

Figure 1. Simplified Schematic

