

11 dB, Bi-Directional Coupler, 10 - 500 MHz

Rev. V4

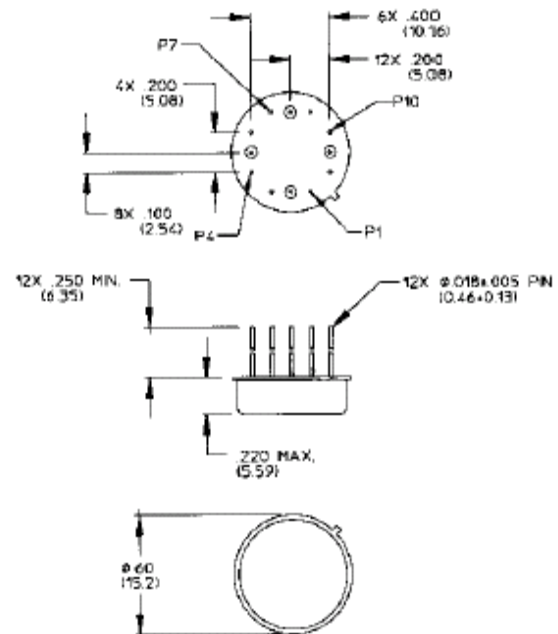
Features

- Constant Coupling - Within ± 0.5 dB Max
- MIL-STD-202 Screening Available

TO-8-2

Description

Bi-Directional couplers offer the ability to couple the power in two directions while maintaining directivity.



Pin Configuration

Pin No.	Function	Pin No.	Function
1	GND	7	GND
2	B	8	A
3	GND	9	GND
4	GND	10	GND
5	C	11	D
6	GND	12	GND

Bottom of Case is AC Ground
 Dimensions in It are in mm
 Unless Otherwise Noted: XXX = ± 0.010 (XX = ± 0.25)
 XX = ± 0.02 (X = ± 0.51)

Electrical Specifications¹: $T_A = -55^\circ\text{C}$ to $+85^\circ\text{C}$

Parameter	Test Conditions	Frequency	Units	Min	Typ	Max
Coupling	Input to Output	—	dB	9.8	10.8	11.8
Coupling Flatness	—	—	dB	—	—	± 0.5
VSWR	All Ports	10 - 500 MHz 25 - 200 MHz	Ratio Ratio	— —	— —	1.8:1 1.5:1
Directivity	Both Directions	—	dB	17	—	—
Main Line Loss ²	—	—	dB	—	—	1.6
Input Power	—	—	Watt	—	—	1.0

1. All specifications apply with 50 ohm source and load impedance.

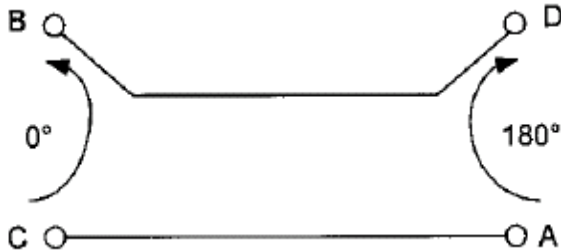
2. Includes theoretical power split.

This product contains elements protected by United States Patent number 3,426,298.

11 dB, Bi-Directional Coupler,
10 - 500 MHz

Rev. V4

Functional Diagram

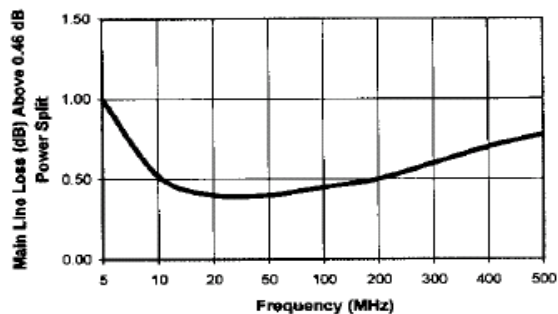


Ordering Information

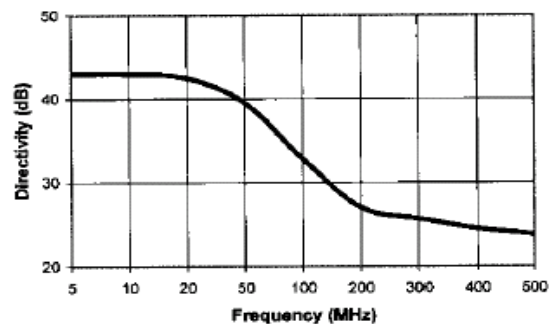
Part Number	Package
CH-138 PIN	TO-8-2

Typical Performance Curves

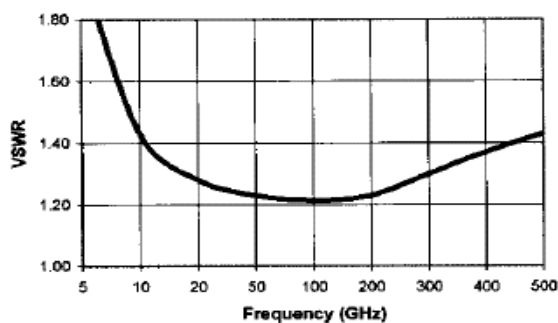
Main Line Loss



Directivity



VSWR



Coupling

