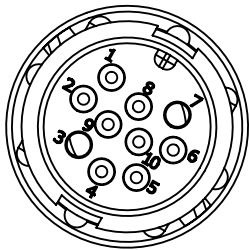


NOTES:

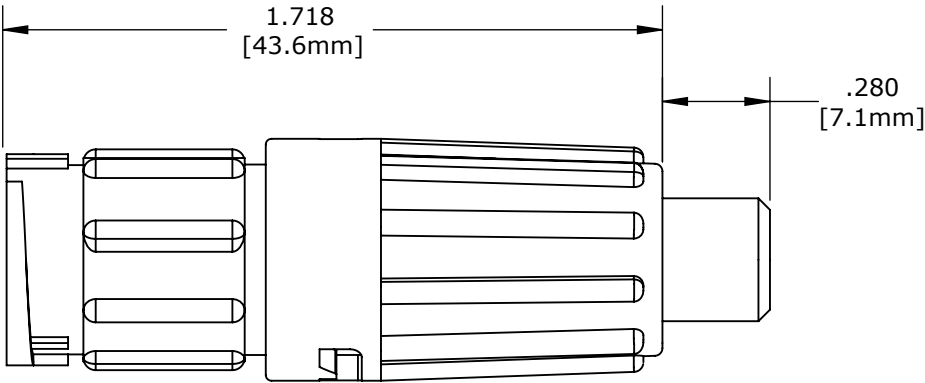
- 1. CONTACTS ARE ASSEMBLED INTO CONNECTOR.
- 2. PARTS ARE TO BE BAGGED AS A KIT.
- 3. ALL DIMENSIONS ARE FOR REFERENCE ONLY.

KIT PART NO.	CABLE OD.
X8882-10PG-522	.220-.250 [5.6-6.4mm]
X8882-10PG-528	.265-.285 [6.7-7.2mm]

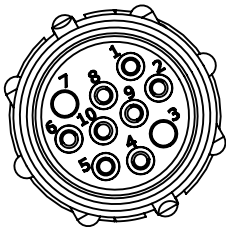
NO. OF CONTACTS — GROMMET SIZES



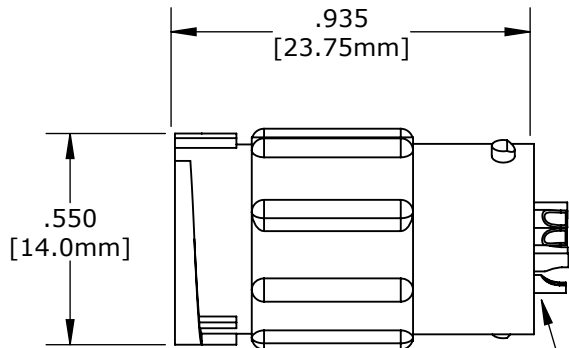
FACE VIEW



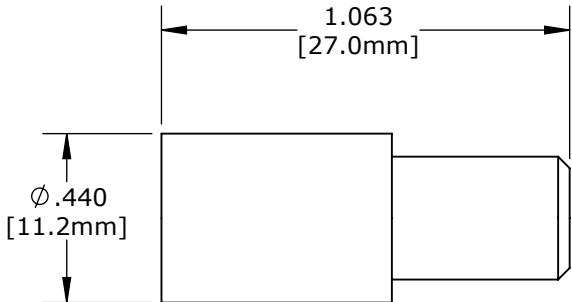
ASSEMBLED KIT VIEW
W8882-10PG-522 SHOWN



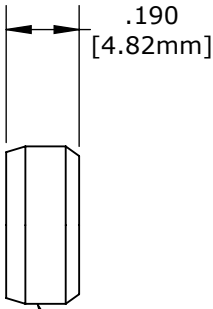
WIRE VIEW



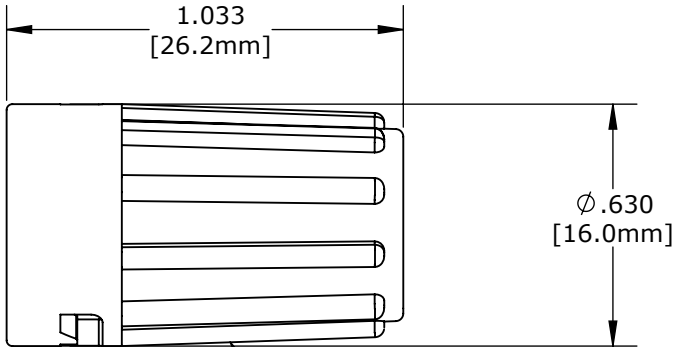
IN LINE CONNECTOR



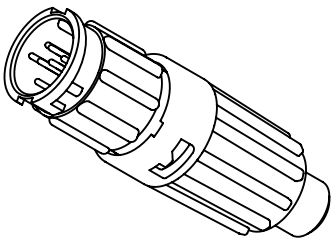
GROMMET, LONG



CABLE GRIP



BACKSHELL, LONG



ASSEMBLED KIT
FOR CUSTOMER REFERENCE

CUSTOMER DRAWING

CUSTOMER APPROVAL	
THIS DOCUMENT CONTAINS CONFIDENTIAL INFORMATION PROPRIETARY TO CONXALL CORPORATION. ANY REPRODUCTION, DISCLOSURE, OR USE OF THIS DOCUMENT /INFORMATION IS EXPRESSLY PROHIBITED UNLESS AUTHORIZED IN WRITING BY CONXALL CORPORATION.	
APPROVED BY: _____	
DATE: _____	

0A		AM		04/05/16		PREVIOUS PN WAS X13015-8882-10PG-XXX_REV0A					
REV.		INIT.		DATE		DESCRIPTION					
<div>ALL INFORMATION ILLUSTRATED IS THE PROPERTY OF "CONXALL CORPORATION." UNAUTHORIZED DUPLICATION OR DISTRIBUTION OF THIS DOCUMENT IS PROHIBITED.</div> <div>ALL UNITS ARE IN FEET, INCHES, FRACTION OF INCHES AND DECIMALS.</div> <div>UNLESS OTHERWISE SPECIFIED TOLERANCES: 3 PLACE DECIMALS ±.005 ANGLES ±1° FRACTIONS ±1/16</div> <div>▷ = CRITICAL CHARACTERISTIC FLAG PER SPEC. XXXX</div>						ORIG. DRAWN BY: AM		DATE: 04/05/16		<div>conxall</div> <div>601 E. WILDWOOD VILLA PARK, IL 60181</div>	
						CHECKED BY:					
<div>APPROVED BY:</div>						TITLE:		<div>IN-LINE CONNECTOR, KIT (10) #22 SOCKET CONTACT, SOLDER MINI-CON-X STANDARD PRODUCT</div>			
SCALE		SIZE		SHEET		CUSTOMER:		<div>W8882-10PG-5XX</div>			
NTS		B		1 OF 1		PART NUMBER:					
FILE:				DIRECTORY:		REV		0A			
				SLW							