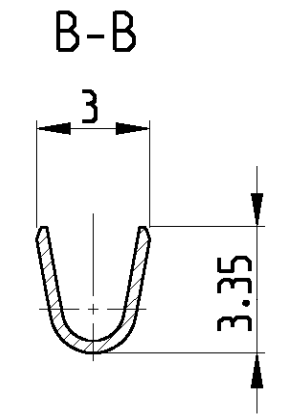
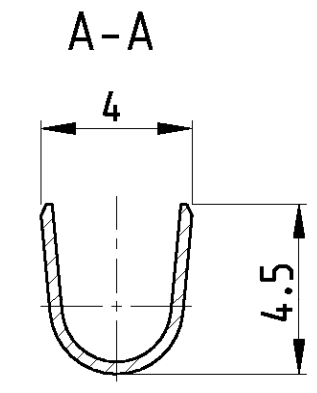
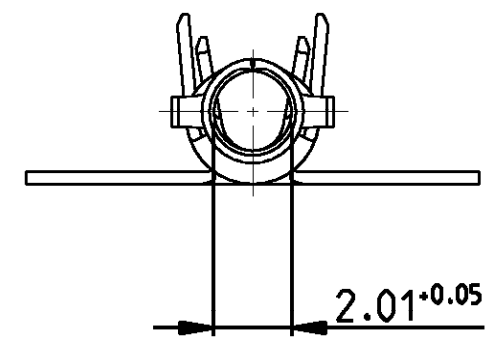
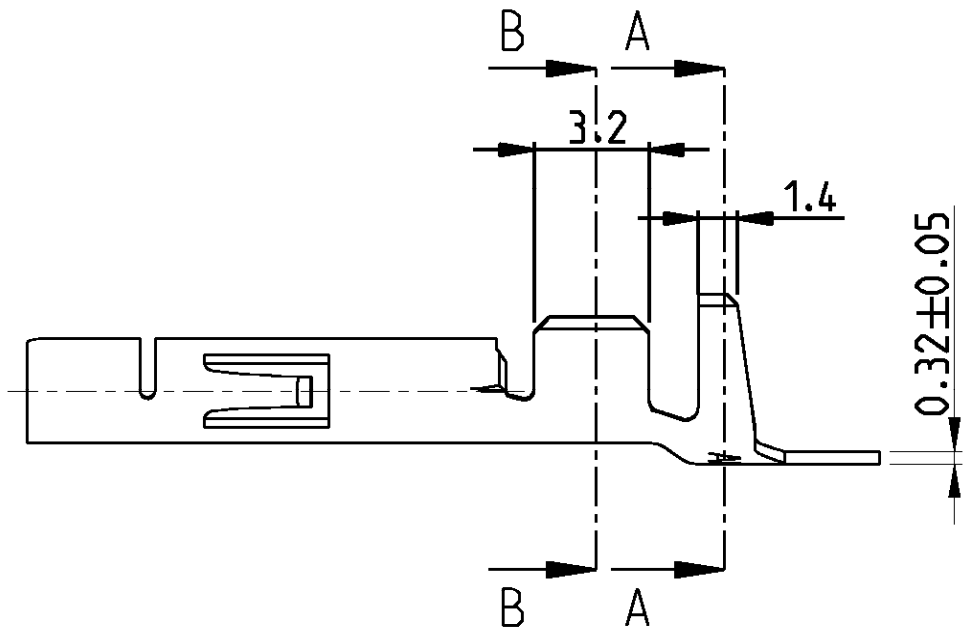


THIS DRAWING IS UNPUBLISHED. RELEASED FOR PUBLICATION
 © COPYRIGHT - BY - ALL RIGHTS RESERVED.

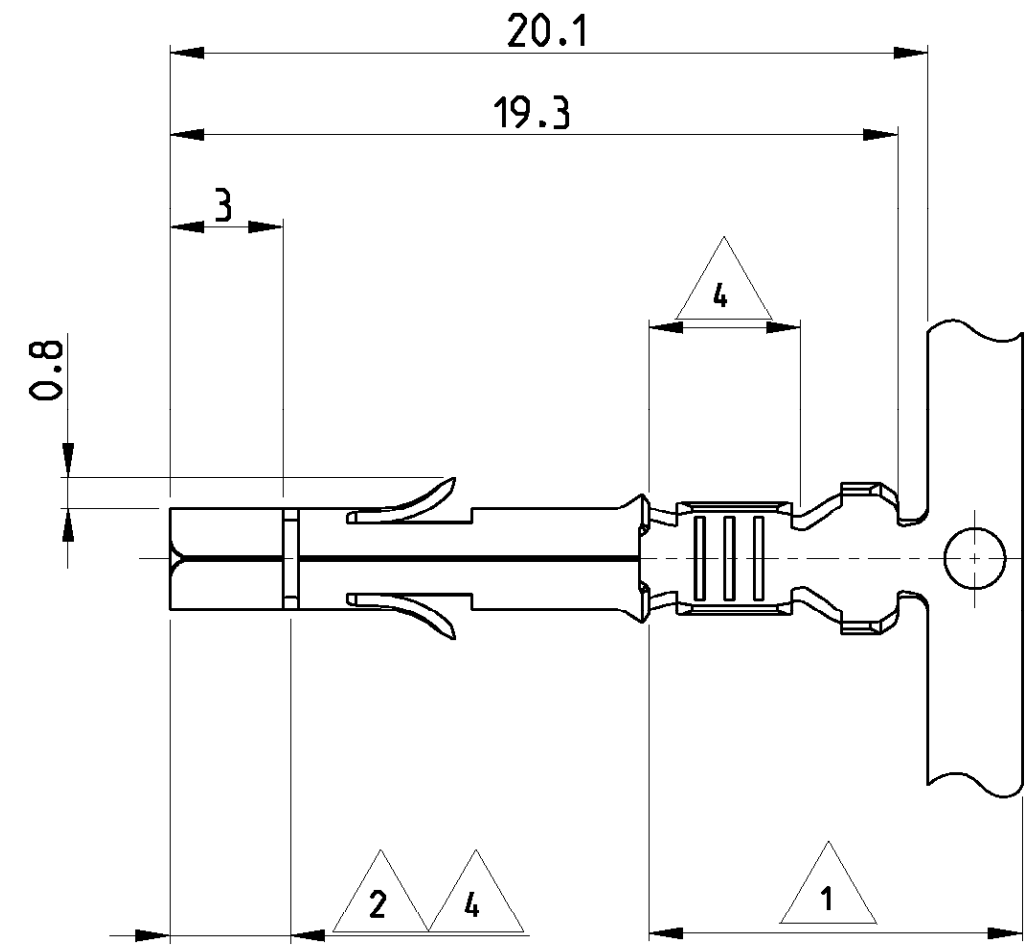
| LOC | DIST | REVISIONS | | | | |
|-----|------|-------------|---------------------------|-----------|------|----|
| P | LTR | DESCRIPTION | DATE | DWN | APVD | |
| AL | 2 | M5 | REVISED PER ECR-16-009210 | 28JAN2017 | BW | RS |



NOTES:

Bemerkungen:

- 1 2-6 µm Sn OVER Ni IN CRIMP-AREA
2-6 µm Sn über Ni in der Crimpzone
- 2 0.8 µm Au OVER Ni IN CONTACT-AREA
0.8 µm Au über Ni in der Kontaktzone
- 3 SUITABLE FOR Ø1.0-2.5mm
Für Isolations Ø1.0-2.5mm geeignet
- 4 0.8 µm Au OVER 1.3 µm Ni ON INSIDE OF WIRE BARREL AND CONTACT AREA
0.8 µm Au über 1.3 µm Ni in der Drahtcrimp und Kontaktzonen, sonst 1.3 µm Ni



| REELING | LOOSE PIECE | PART NO. | MATERIAL | FINISH |
|------------------------|-------------|-------------------------|---------------------|--|
| | | 107-3. FIG.2 | 926882-8 | BRASS PRE-TIN |
| SUPERSEDED BY 350536-7 | | 107-3. FIG.1 | 926893-7 | 926884-7 BRASS |
| Superseded by 350536-6 | | 107-3. FIG.1 | 926893-6 | 926884-6 PHOS BRONZE |
| OBSOLETE | | 107-3. FIG.1 | 926893-5 | 926882-5 COPPER ALLOY PRE-TIN |
| OBSOLETE | | 107-3. FIG.1 | 926893-4 | 926882-4 COPPER ALLOY PLAIN |
| | | 107-3. FIG.1 | 926893-3 | 926882-3 PHOS BRONZE PRE-TIN |
| SUPERSEDED BY 350536-2 | | 107-3. FIG.1 | 926893-2 | 926882-2 BRASS |
| | | 107-3. FIG.1 | 926893-1 | 926882-1 BRASS PRE-TIN |

| | | | |
|----------------------------|--|------------------------------------|---------------------|
| DWN J.Skoda 29NOV2005 | | TE Connectivity | |
| CHK R.Vlcek - | | | |
| APVD M.Bleicher - | | NAME | |
| PRODUCT SPEC 108-1031 | | UNIVERSAL MNL Socket | |
| APPLICATION SPEC 114-18011 | | 0.5-2.1 mm ² WIRE RANGE | |
| WEIGHT - | | SIZE A3 | RESTRICTED TO |
| MATERIAL SEE TABLE | | CAGE CODE 00779 | DRAWING NO C-926882 |
| FINISH SEE TABLE | | SCALE 5:1 | SHEET 1 OF 1 |
| CUSTOMER DRAWING | | REV M5 | |