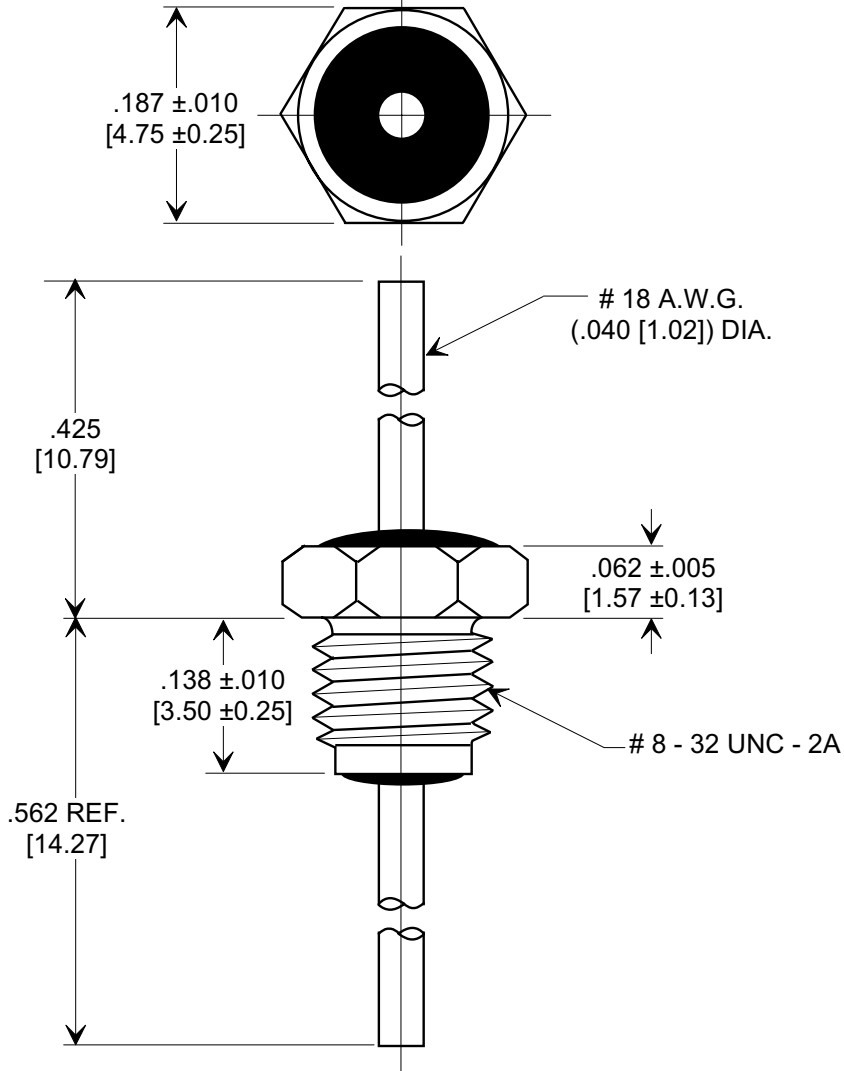
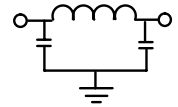
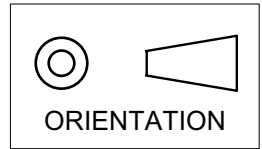


MARKETING SALES DRAWING
DIMENSIONS IN INCHES - DO NOT SCALE THIS DRAWING
DIMENSIONS IN METRIC - []

Electrical Testing
per Tusonix standard
test plans and Mil-Std-202
Test Methods.



NOTES:

- TUSONIX STANDARD PART NUMBER: 4205-004.
TUSONIX RoHS COMPLIANT PART NUMBER: 4205-004 LF.
CUSTOMER MUST SPECIFY STANDARD OR RoHS PART NUMBER WHEN ORDERING.
- LEAD FINISH: STANDARD PART #: 60/40 SOLDER PLATED COPPER. RoHS PART #: SILVER PLATED COPPER.
- BUSHING: SILVER PLATED STEEL.
- PART MARKING: TRADEMARK AND VARIATION NUMBER ON HEX FLATS.
STANDARD PART: BLACK INK. RoHS PART: GREEN INK.
- SUPPLIED WITH SILVER PLATED COPPER ALLOY HEX NUT AND INTERNAL TOOTH LOCK WASHER.
- MAXIMUM MOUNTING TORQUE 5 LB.-IN. [.565 N-m].

MIN. CAP. (pF)	WORKING VOLTAGE (WVdc)		CURRENT Idc	I.R. MIN. @ 100 (VDC)	DWV (VDC)	MINIMUM NO LOAD INSERTION LOSS (dB) AT 25°C PER MIL-STD-220			
	85° C	125° C				10 MHz	100 MHz	1 GHz	10 GHz
1500	250	125	15	10 G Ω	500	5	35	60	60

X-2015 Rev-0 REVISION RECORD Original Release C.O. 20001128-4-01 ADDED IR & DWV. ADDED & REVISED NOTES. S.M. 11-30-06 20051102-4-04 1	--TOLERANCES-- Unless Otherwise Specified		Title BUSHING STYLE EMI FILTER	
	DECIMAL ± .031 [.79]		Drawn L.E. 11-28-00	Scale 6 X
	ANGLES ±		Approved T.C. 11-28-00	
	TUSONIX TUCSON, ARIZONA		A	4205-004