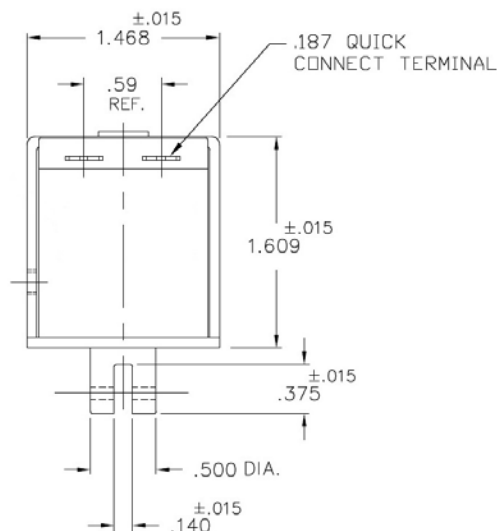
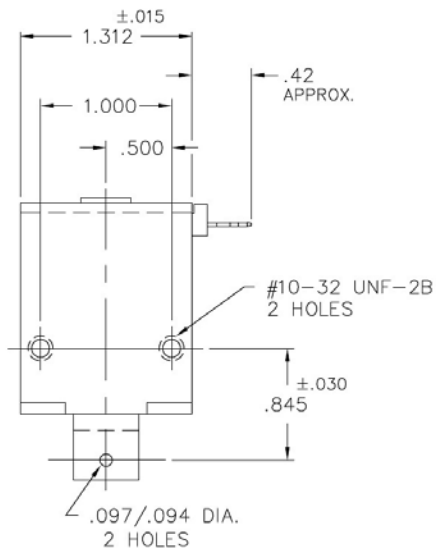


Model B22

DC Pull Box Frame Solenoid

Size: 1.61" L x 1.31" W x 1.47" H

ALL PRODUCTS ARE RoHS COMPLIANT



Solenoid shown energized with plunger fully seated

| Part No. | Duty Cycle | Voltage | Resistance (Ω) ± 5% | Max On Time | Power (W) | Current (A) |
|--------------|--------------|---------|---------------------|-------------|-----------|-------------|
| B22-255-M-36 | Intermittent | 12 VDC | 3.64 | 23 Secs | 39.6 | 3.30 |
| B22-254-M-36 | Continuous | 12 VDC | 14.55 | ∞ | 9.9 | 0.82 |
| B22-254-M-36 | Intermittent | 24 VDC | 14.55 | 23 Secs | 39.6 | 1.65 |
| B22-253-M-36 | Continuous | 24 VDC | 58.18 | ∞ | 9.9 | 0.41 |

Continuous Duty = 100% "On" Time

Intermittent Duty = 25% "On" Time

When ordering please refer to Part No. as listed above

Please consult factory for custom configurations

| Stroke (in.) | Typical Pull Force (oz.) | | | | | | | | Holding Force (oz.) |
|-------------------|--------------------------|-------|-------|-------|-------|-------|-------|-------|---------------------|
| | 0.020 | 0.040 | 0.060 | 0.080 | 0.125 | 0.250 | 0.375 | 0.500 | |
| Continuous Duty | 112.0 | 80.0 | 68.8 | 56.0 | 35.2 | 16.0 | 9.6 | 6.4 | 128.0 |
| Intermittent Duty | 176.0 | 153.6 | 144.0 | 131.0 | 112.0 | 63.2 | 36.8 | 24.5 | N/A |

Additional Specifications:

Dielectric Strength: 1500 VRMS

Recommended Heat Sink: All force values shown are with no heat sink and 20°C ambient temperature

Coil Insulation: Class "A" - 105°C max temperature

Total Unit Weight: 7.5 oz. / 212.6 g

Plunger Weight: 1.4 oz. / 39.7 g

