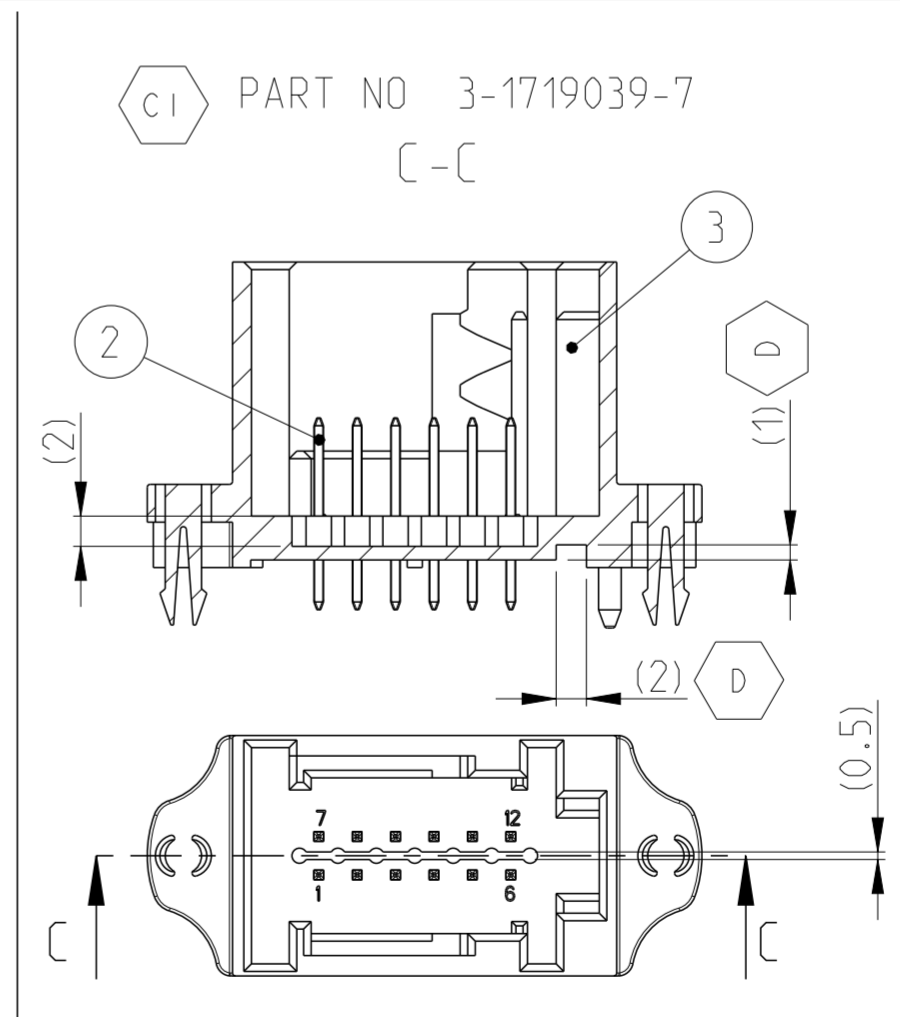
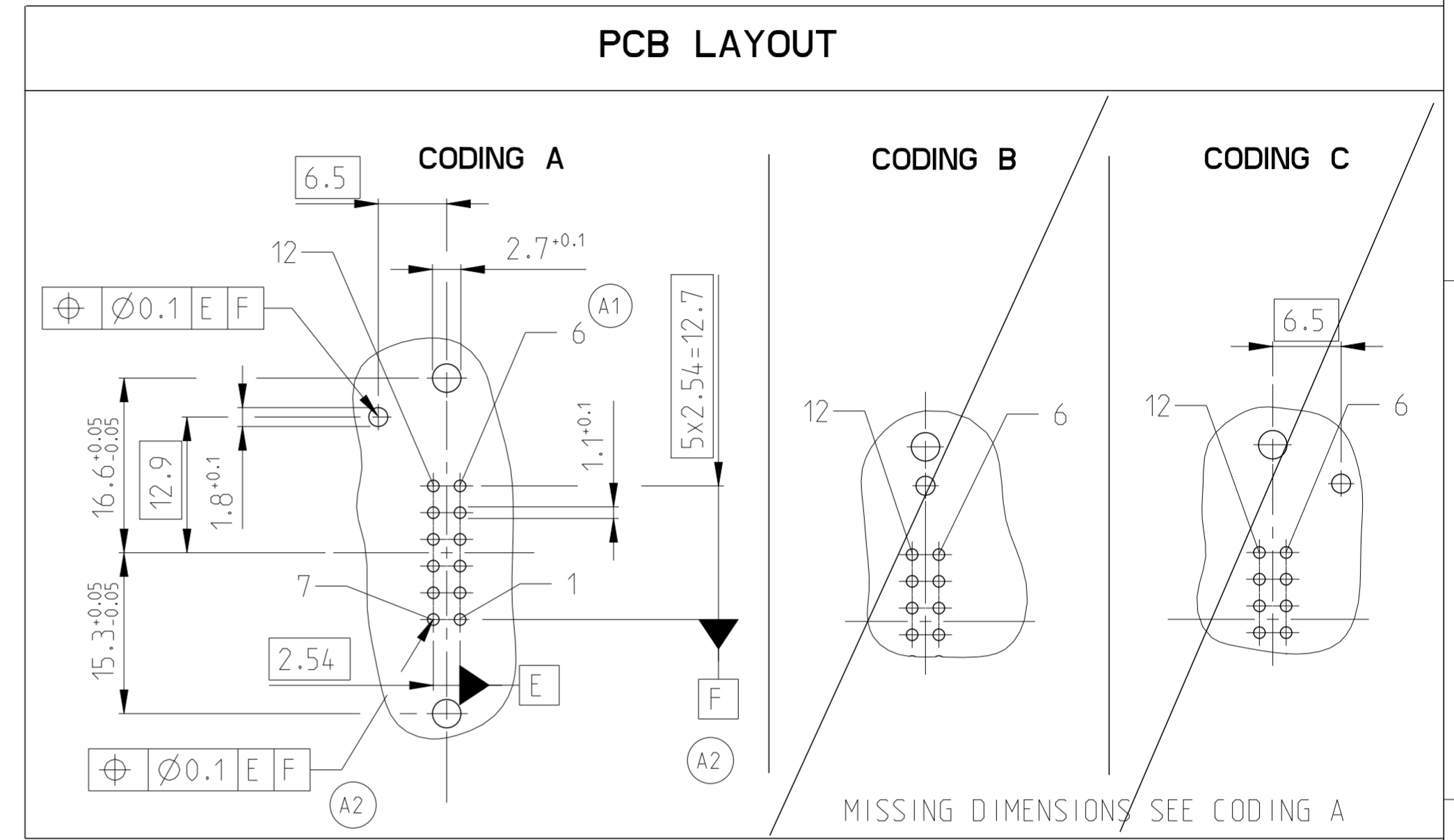
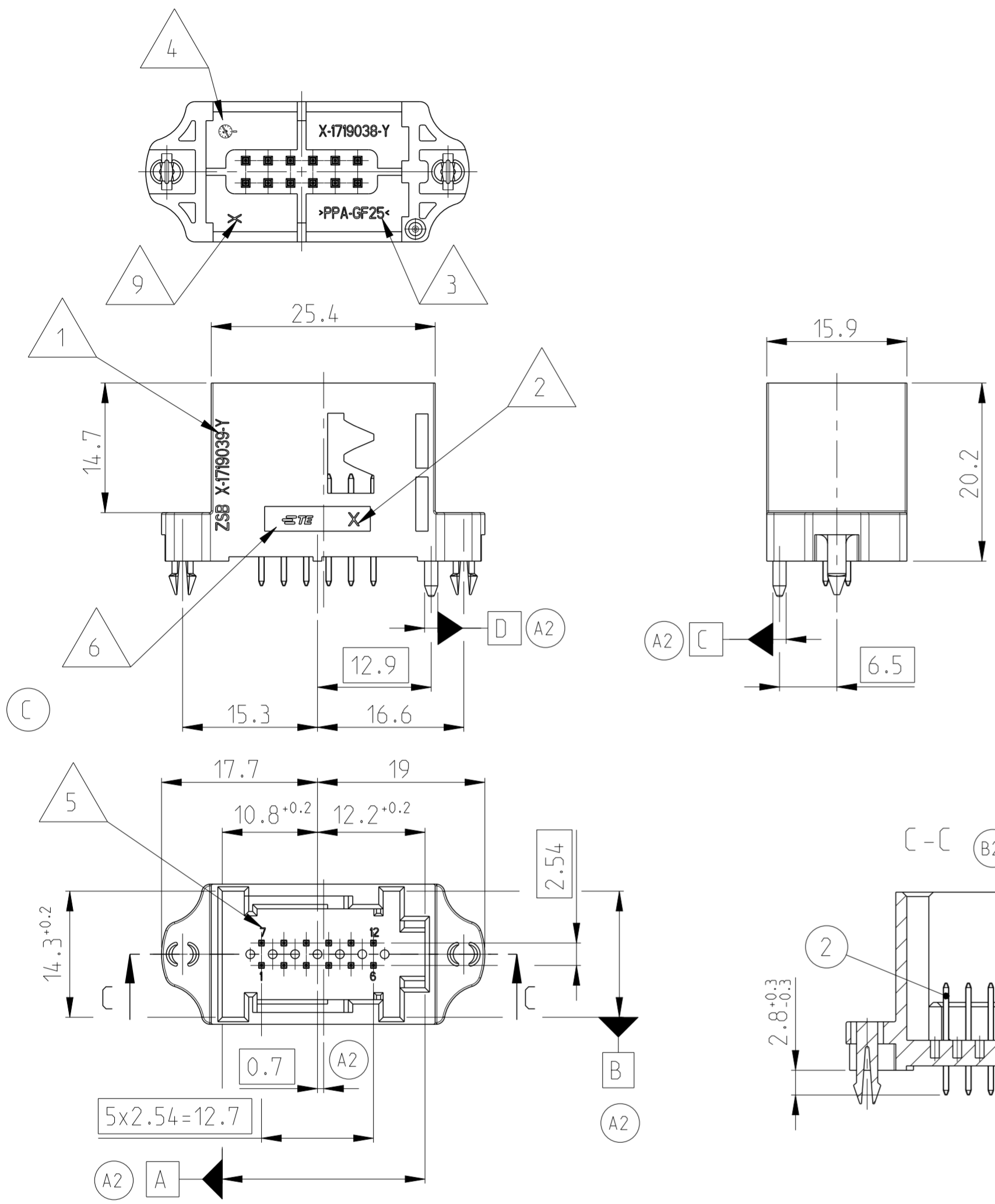


INTERFACE DRAWING
 114-18063-091

REVISONS				
P	LTR	DESCRIPTION	DATE	APVD
C2		SEE PCN E-15-004250	17MAR2015	HS RH
D		SEE PCN E-15-008004	27MAY2015	HS RH
-	-	-	-	-
-	-	-	-	-



NOTES
 BEMERKUNGEN

- NV NOTE NOT VALID
Bemerkung nicht verwendet
- 1 ORDER NUMBER
BESTELL-NUMMER
- 2 REVISION NUMBER SINGLE PART
WERKZEUGÄNDERUNGSINDEX EINZELTEIL
- 3 MATERIAL MARKING
WERKSTOFFKENNZEICHNUNG
- 4 PRODUCTION DATE
PRODUKTIONSdatum
- 5 CONTACT CAVITY NUMBER
KONTAKTKAMMERNUMMER
- 6 TE LOGO
- NV PACKAGING: BULK MATERIAL IN CARDBOARD BOX
VERPACKUNG: SCHÜTTGUT IN KARTON
- 8 PACKAGING: TRAYS IN CARDBOARD BOX
VERPACKUNG: PRODUKTTRAEGER IM KARTON
- 9 TOOL CAVITY MARKING
NESTMARKIERUNG
- 10 ATTENTION: PRE SERIES PARTS
ARE MARKED WITH A PINK DOT!
PACKAGING DEPENDS ON ORDER
ACHTUNG: VORSERIEENTEILE SIND MIT EINEM ROSA PUNKT MARKIERT!
VERPACKUNGSEINHEIT RICHTET SICH NACH AUFTRAGSMENGE
- C2 11 PACKAGING: TRAYS IN CARDBOARD BOX, DRY PACK
VERPACKUNG: PRODUKTTRAEGER IM KARTON, TROCKENVERPACKUNG

PART NO	REV	MECH. CODE	PCB CODE	WEIGHT	PCS	MATERIAL	SURFACE COLOR	DESCRIPTION	ITEM
8-1719039-7	C	B	A	5.34	12	CuSn6	TINNED	AMPMODU II PIN	2
					1	PPA-GF25	BLACK	PIN HEADER, 12POS.	1
3-1719039-7	B	B	A	5.11	12	CuSn6	TINNED	AMPMODU II PIN	2
					1	PPA-GF25	BLACK	PIN HEADER, 12POS.	3
1-1719039-9	C	B	C	5.34	12	CuSn6	TINNED	AMPMODU II PIN	2
					1	PPA-GF25	BLACK	PIN HEADER, 12POS.	1
1-1719039-8	C	B	B	5.34	12	CuSn6	TINNED	AMPMODU II PIN	2
					1	PPA-GF25	BLACK	PIN HEADER, 12POS.	1
1-1719039-7	C	B	A	5.34	12	CuSn6	TINNED	AMPMODU II PIN	2
					1	PPA-GF25	BLACK	PIN HEADER, 12POS.	1

THIS DRAWING IS A CONTROLLED DOCUMENT.		DWN M.Reinhardt 06APR2005	TE Connectivity
DIMENSIONS: mm		CHK V.Bergmann 14APR2005	
TOLERANCES UNLESS OTHERWISE SPECIFIED:		APVD -	
0 PLC ±0.5		PRODUCT SPEC 108-18983 (A2)	NAME MODU II PIN HEADER, 12POS. MODU II Stiftleiste, 12pol.
1 PLC ±0.5		APPLICATION SPEC -	SIZE A2
2 PLC ±0.5		WEIGHT -	CAGE CODE 00779
3 PLC ±		CUSTOMER DRAWING	DRAWING NO C-1719039
4 PLC ±		SCALE 2:1	SHEET 1 of 1
ANGLES ±°		RESTRICTED TO	REV D

