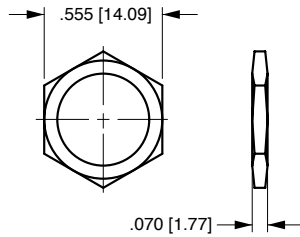


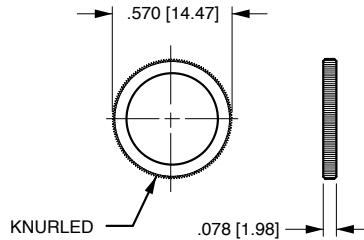
Bushing Accessories

The hardware options and accessories listed below were specifically designed to be used with toggle and pushbutton switches. The drawings are representative of the actual products. When other hardware options are required, please consult factory.



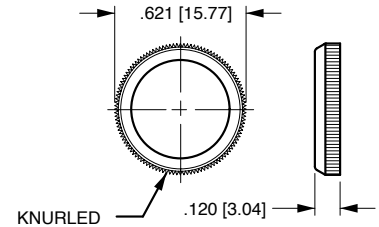
STANDARD HEXNUT

.562 in. [14.27 mm] X .076 in. [1.93 mm]
NICKEL: 380-08602
BLACK: 380-08606



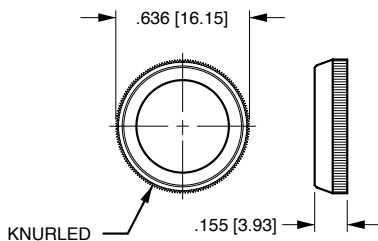
STANDARD FACENUT

.570 in. [14.47 mm] X .078 in. [1.98 mm]
NICKEL: 380-08693
BLACK: 380-08694



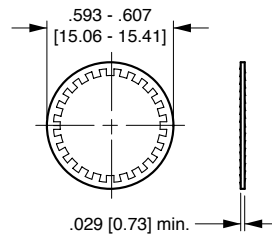
PLASTIC FACENUT

(Wrench Supplied N/C)
.625 in. [15.87 mm] X .120 in. [3.04 mm]
BLACK: 384-17126-001
RED: 384-17126-002
WHITE: 384-17126-003



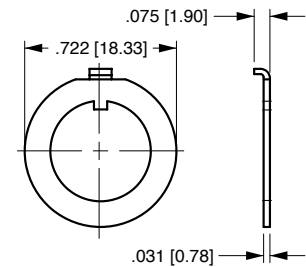
DRESS FACENUT

.636 in. [16.15 mm] X .155 in. [3.93 mm]
NICKEL: 380-08810
BLACK: 380-08811



LOCKWASHER

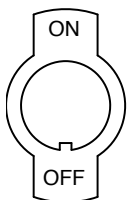
NICKEL-PLATED: 728-15907



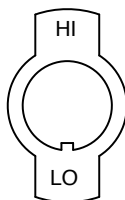
LOCKING RING

ZINC: 728-15946
BLACK: 728-15947

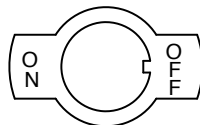
All indicator plates are nickel-plated steel. Odd keyway locations, alternate imprints and plating available on special order. Contact factory for minimum quantities and specifications.



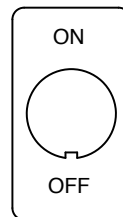
YO1
272-06747



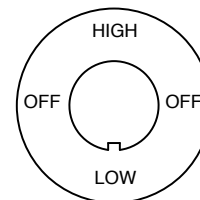
YO2
272-06764



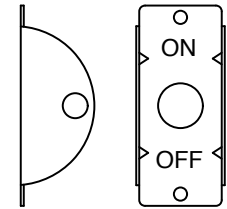
Y51
272-06842



Y101
272-06935



Y311
272-07258



Y500
272-07293

ALL PLATES SHOWN FIT 15/32" (.465 [11.81]) BUSHINGS



Carling Technologies™
Innovative Designs. Powerful Solutions.