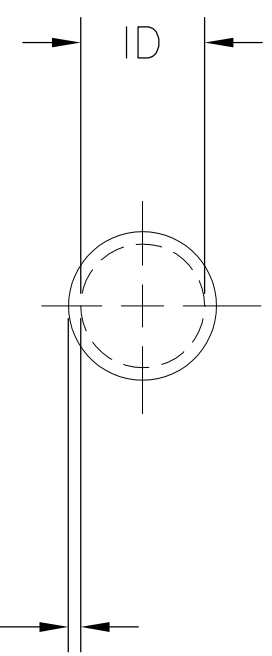
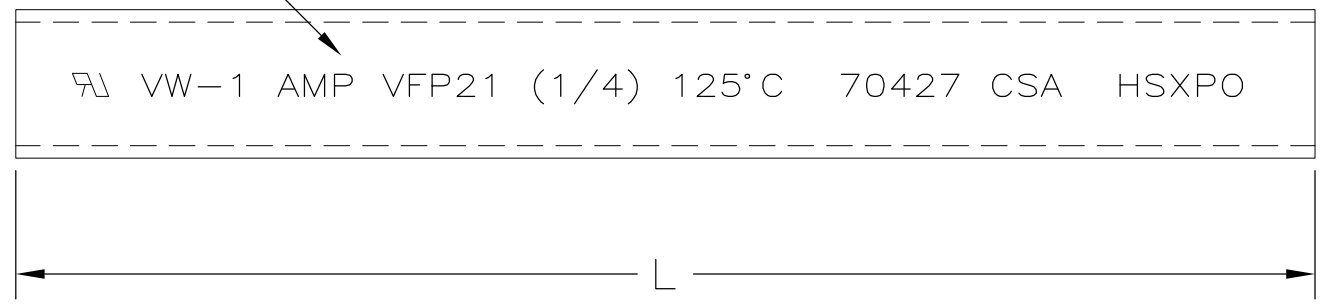
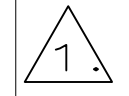


6.35 [.250] MINIMUM EXPANDED
 3.18 [.125] MAXIMUM RECOVERED



REVISIONS		
LTR	DESCRIPTION	DATE
Y	REVISED PER DCR NO R060226	10/13/2006
Y1	REVISED PER ECO-09-021510	12SEP09

0.64 [.025] NOMINAL WALL THICKNESS FULLY RECOVERED



TUBING VFP21 MARKED AS SHOWN IN WHITE CHARACTERS ON SURFACE INDICATED



TUBING VFP21 IS UL RECOGNIZED, IS RATED 125°C [257°F] AND MEETS VW-1 FLAME TEST.



TUBING VFP21 IS CSA CERTIFIED AND MEETS VW-1 FLAME TEST.



TUBING FP21 IS UNMARKED AND MEETS REQUIREMENTS OF AMS-DTL-23053/5-106-0

5. WEIGHT PER LINEAR FOOT/304.8 mm:
 2.54 g/.006 lbs.

6. MATERIAL: BLACK POLYOLEFIN

OBSOLETE PARTS: OBSOLETE CIS STREAMLINING PER D.RENAUD/D.SINISI

			60.96 m [200 ft] MINIMUM	2-603326-7
			60.96 m [200 ft] MINIMUM	2-603326-6
			31.75 ± 1.52 [1.25 ± .06]	2-603326-4
			30.48 m [100 ft] MINIMUM	2-603326-2
			30.48 m [100 ft] MINIMUM	2-603326-1
			1.22 m [4 ft] MINIMUM	1-603326-1
			25.4 ± 1.52 [1.00 ± .06]	603326-7
			304.8 ± 3.05 [12.00 ± .12]	603326-4
			1.22 m [4 ft] MINIMUM	603326-1
	MARKING	NOTES	LENGTH L	PART NUMBER

SPECIFICATION CONTROL DRAWING

UNLESS OTHERWISE SPECIFIED DIMENSIONS ARE IN mm. INCH DIMENSIONS ARE IN BRACKETS.	DRAWN UNGUYEN	DATE 10/13/2006	Tyco Electronics Corporation 300 Constitution Drive Menlo Park, CA, USA 94025
	RPN		
DECIMALS .XX ± .01 [.0004 in] .X ± .1 [.004 in] ANGLES .X ± 0.5 DEG	CAD NAME R060226		TITLE AMPSULATION VFP21 AND FP21 1/4 INCH ID, BLACK
	THIRD ANGLE PROJECTION		SIZE B CODE IDENT. NO. 06090 DWG. NO. C-603326
DO NOT SCALE THIS DRAWING			SHEET 1 OF 1