

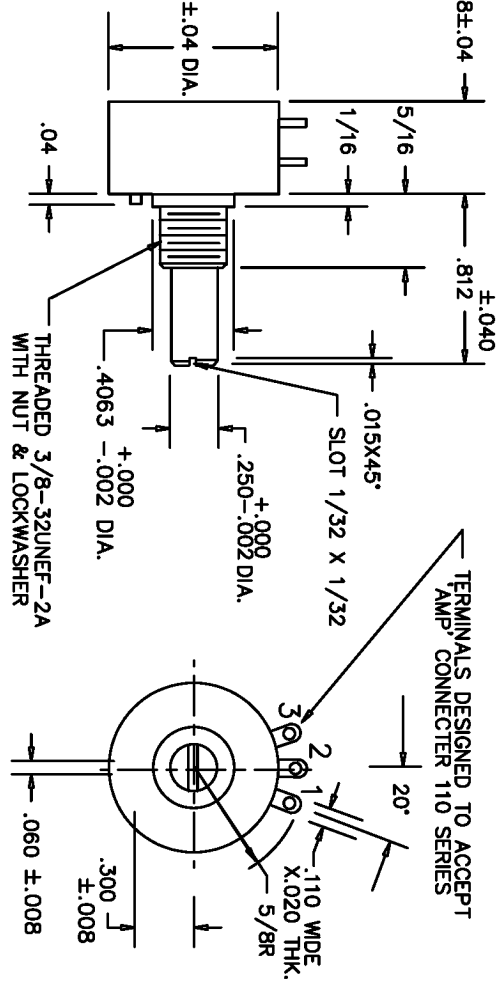
THIS DOCUMENT CONTAINS PROPRIETARY DATA OF POLARIS INDUSTRIAL ENTERPRISES, INC. NO DISCLOSURE, REPRODUCTION, OR USE OF ANY PART THERE OF MAY BE MADE EXCEPT BY WRITTEN PERMISSION.

REV.	BY	DATE	APPRV.	P/N
E	DM	7/25/96	BT	SW22E

ADDED 20K SPECS TO VALUES CHART

SPECIFICATIONS

RESISTANCE RANGE	50 OHMS TO 20K OHMS
RESISTANCE TOLERANCE	±3%
INDEPENDENT, LINEARITY	±0.5%
POWER RATING	0.5 WATTS
ELECTRICAL NOISE	100 OHM MAX.
ELECTRICAL ANGLE	320±5°
MECHANICAL ANGLE	320±5°
STOP STRENGTH	84 OZ.IN.MIN.
END RESISTANCE	2% OR 1 OHM MAXIMUM
RESOLUTION	SEE CHART
INSULATION RESISTANCE	1000 MEGOHMS AT 1000 VDC MIN.
DIELECTRIC STRENGTH	1000 VAC
STARTING TORQUE	0.8 OZ.IN.MAX.
TEMPERATURE COEFFICIENT	SEE CHART
WEIGHT	APPROX. 0.7 OZ.
OPERATING TEMPERATURE	-55°C TO +105°C
ROTATIONAL LIFE	500,000 SHAFT REVOLUTIONS



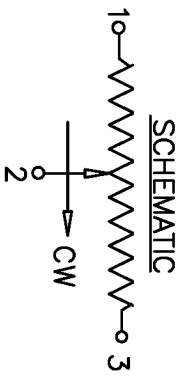
HOUSING-----HIGH TEMP. THERMO PLASTIC
 TERMINALS-----GOLD PLATED BRASS
 BUSHING-----BRASS
 SHAFT-----STAINLESS STEEL
 RESISTIVE ELEMENT-----WIREWOUND

NON-STANDARDS AVAILABLE

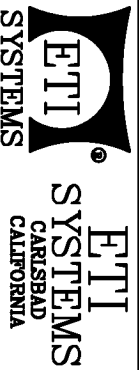
MULTI-RANGED UP TO 6 SECTIONS
 REAR SHAFT EXTENSION
 FRONT SHAFT MODIFICATIONS
 CENTER TAP
 SPECIAL ELECTRICAL AND MECHANICAL ANGLES

STANDARD RESISTANCE VALUES CHART

RESISTANCE (OHMS)	50	100	200	500	1K	2K	5K	10K	20K
RESOLUTION	.33	.27	.21	.22	.17	.13	.10	.08	.06
TEMPERATURE COEFFICIENT PPM/°C	80	80	80	20	20	20	20	20	20



TOLERANCES		SCALE	DATE:	8/4/86
XX = +/- .010"	FRACT. = +/- 1/64"	NONE	BY	BT
XXX = +/- .005"	ANGLES = +/- 1/2°	APPRV/D	BT	
ALL SPECIFICATIONS SUBJECT TO CHANGE WITHOUT NOTICE				
CODE	IDENT:	19477		



TITLE
 SINGLE TURN
 POTENTIOMETER

PART NO.
 SW22E